

○ Avec ou sans mécanique
 With or without mechanical elements
 Con o senza parti meccaniche
 Mit oder ohne Aggregate
 Con ó sin mecánica desmontada

REP.	REFERENCE	PDS	NB	MZ
51	869.7051	0,8	2	
52	869.7052	2,2	1	140/080
53	869.7053	2,2	1	140/080
54	869.7054	3,6	1	142
55	869.7055	3,6	1	141
56	869.7056	2,0	1	200
57	869.7057	2,0	1	200
58	869.7058	0,2	2	
59	869.7059	2,0	1	260
60	869.7060	2,0	1	260
61	869.7061	1,1	2	

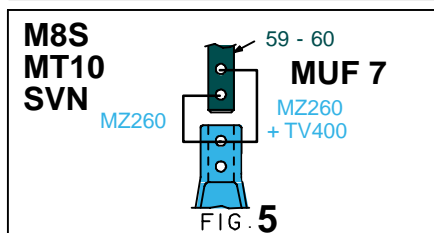
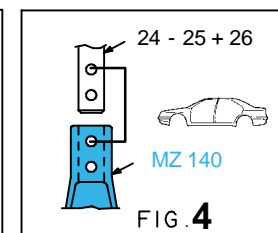
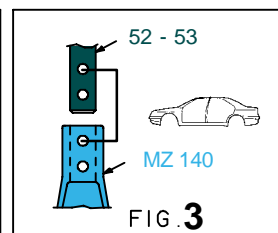
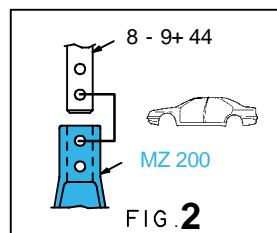
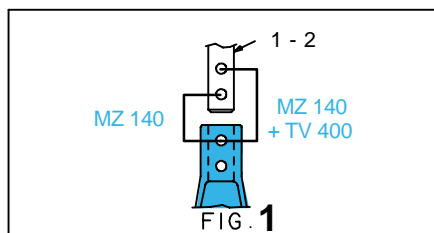
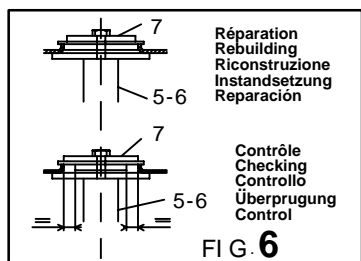
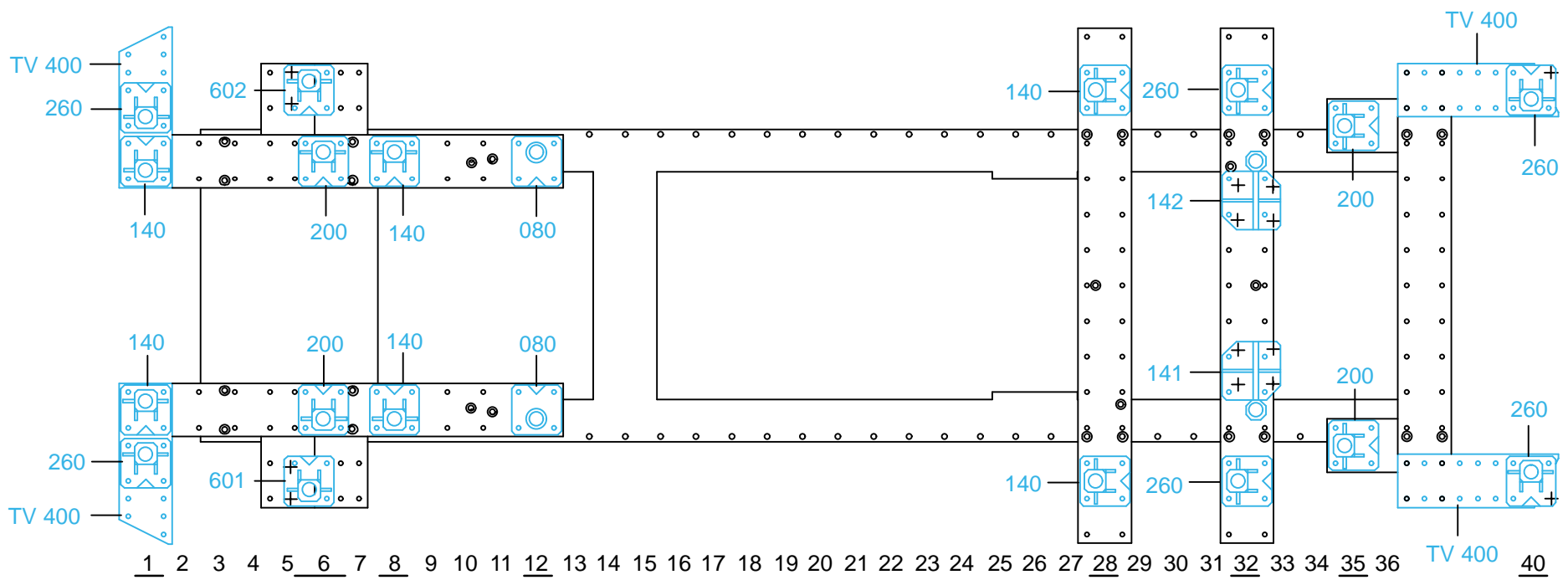
M 12x1,25-35	2
M 14x1,50-20	2
M 14x1,50-40	2
M 14x1,50-70	2
M 14x1,50-120	2
MU 14	2

complément au
 complementary set to
 complemento al
 zusatz zu **869.310**

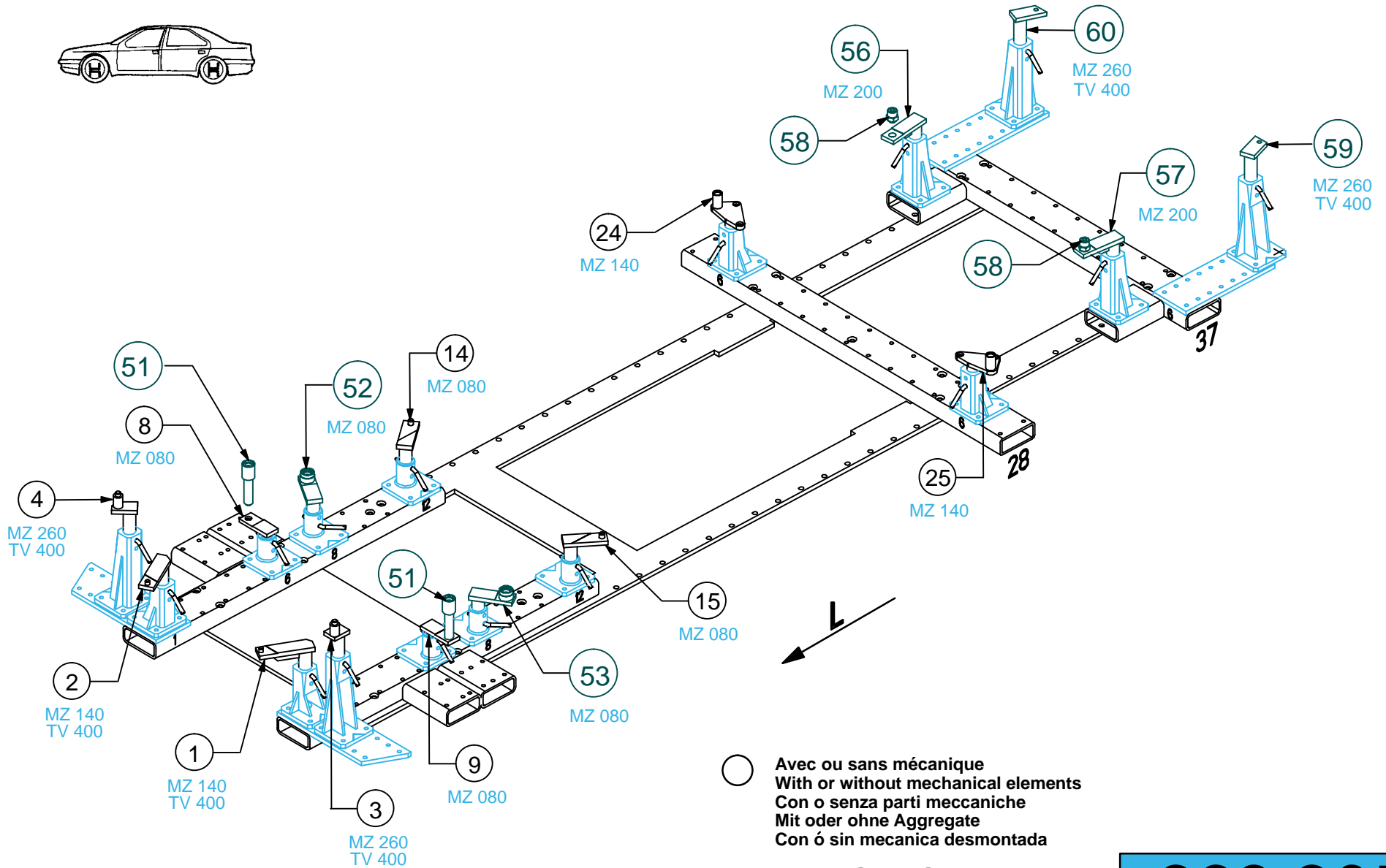
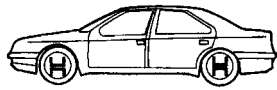
TOYOTA

869.305

24 Kg | 11.09.2003 | 434-D-73Y



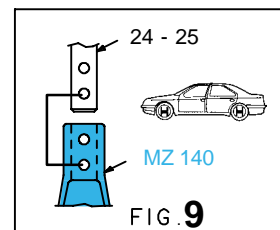
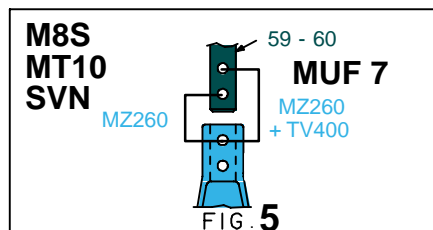
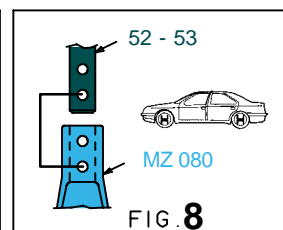
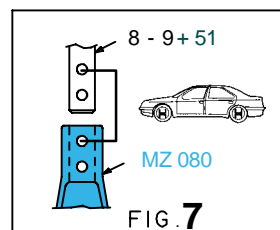
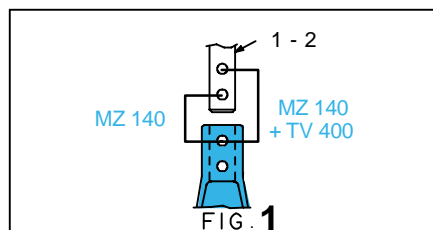
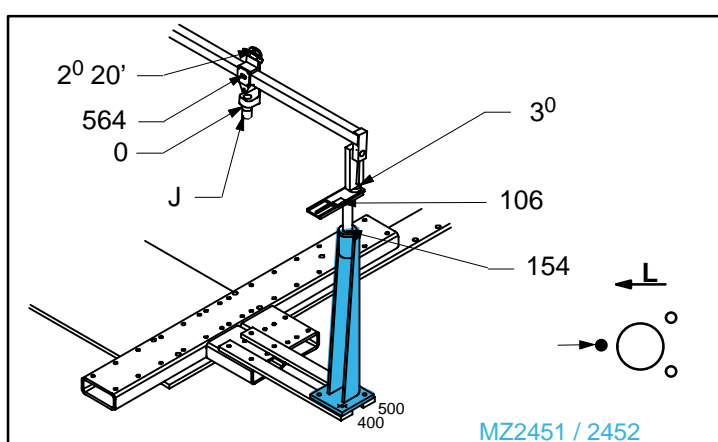
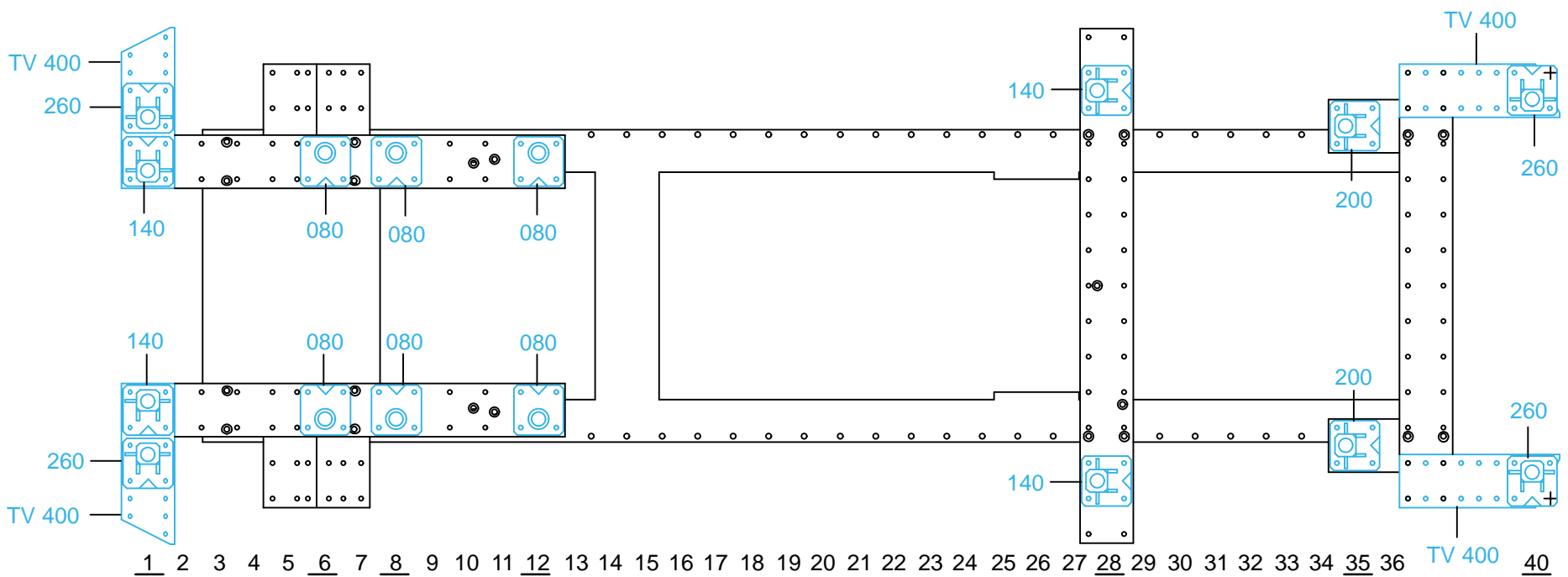
869.305-RVA3-1 00



TOYOTA

869.305

24 Kg | 11.09.2003 | 434-D-73Z



869.305-RVA3-1 | 00