

○ Avec ou sans mécanique
With or without mechanical elements
Con o senza parti meccaniche
Mit oder ohne Aggregate
Con ó sin mecánica desmontada

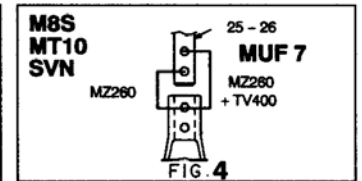
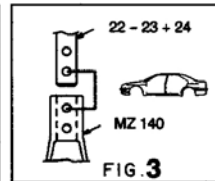
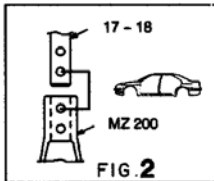
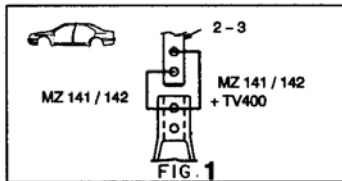
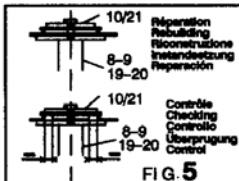
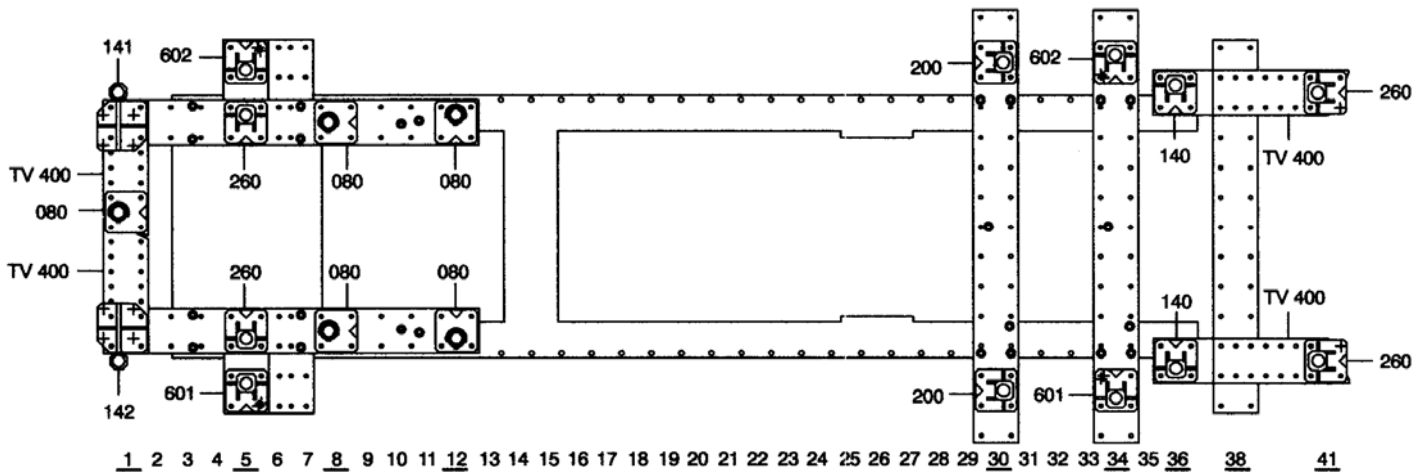
TOYOTA / LEXUS

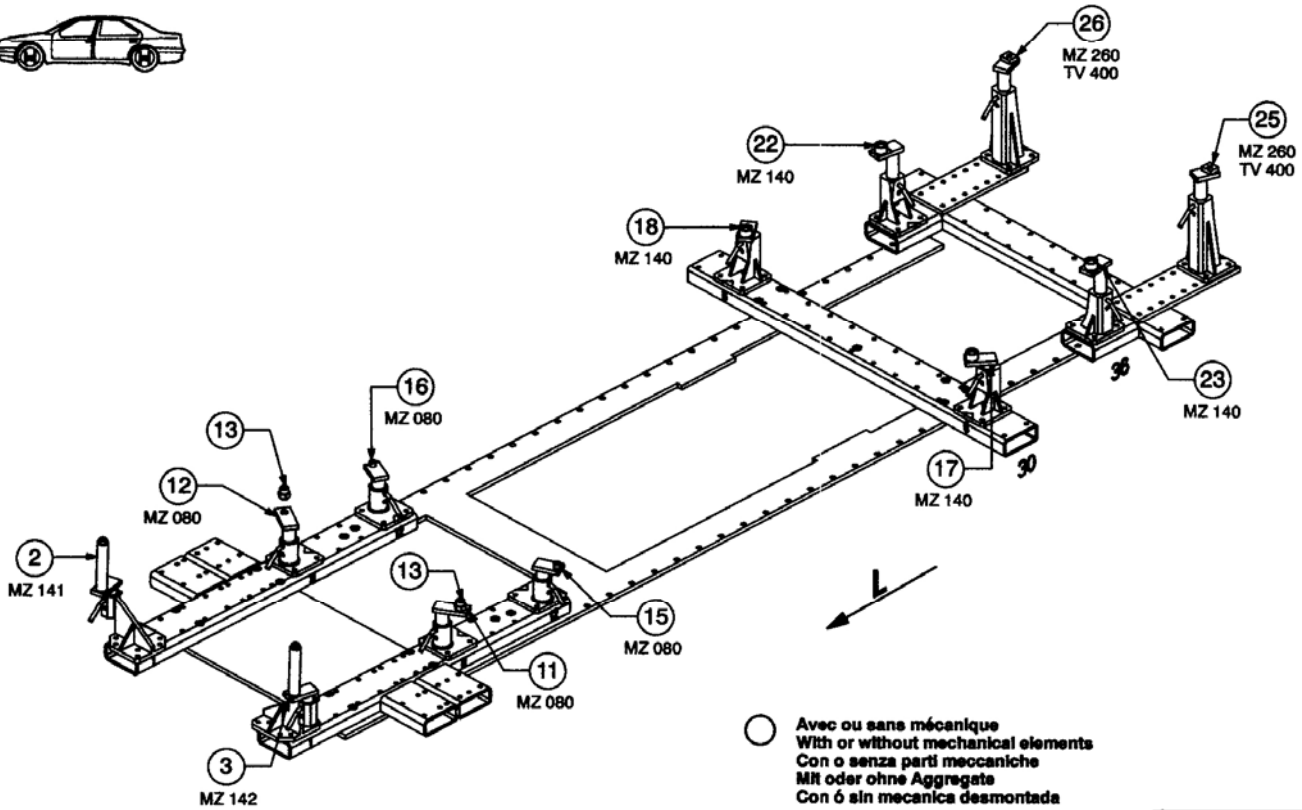
REP.	REFERENCE	PDS	NB	MZ
1	794.7001	2,9	1	080
2	794.7002	2,95	1	141
3	794.7003	2,95	1	142
4	794.7004	2,6	1	260
5	794.7005	2,6	1	260
6	794.7006	4,7	1	602
7	794.7007	4,7	1	601
8	794.7008	2,2	1	
9	794.7009	2,2	1	
10	794.7010	0,5	2	
11	794.7011	1,8	1	080
12	794.7012	1,8	1	080
13	794.7013	0,2	2	
14	794.7014	0,8	2	
15	794.7015	1,5	1	080
16	794.7016	1,5	1	080
17	794.7017	1,7	1	140/200
18	794.7018	1,7	1	140/200
19	794.7019	2,5	1	601
20	794.7020	2,5	1	602
21	794.7021	0,3	2	
22	794.7022	2,6	1	140
23	794.7023	2,6	1	140
24	794.7024	0,4	2	
25	794.7025	2,1	1	260
26	794.7026	2,1	1	260
	B.70	0,2	2	

M 6-30	1
M 12-30	4
M 12x1,25-45	2
M 14x1,50-20	2
M 14x1,50-40	4
M 14x1,50-60	2
M 14x1,50-70	2
M 14x1,50-110	2
M 14x1,50-150	2

794.300

58 Kg | 14.01.99 | 434-D-58A





○ Avec ou sans mécanique
With or without mechanical elements
Con o senza parti meccaniche
Mit oder ohne Aggregate
Con ó sin mecánica desmontada

TOYOTA / LEXUS

794.300

58 Kg	14.01.99	434-D-58B
-------	----------	-----------

