



☐ Avec ou sans mécanique  
With or without mechanical elements  
Con o senza parti meccaniche  
Mit oder ohne Aggregate  
Con ó sin mecánica desmontada

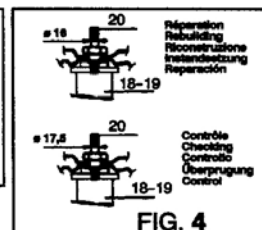
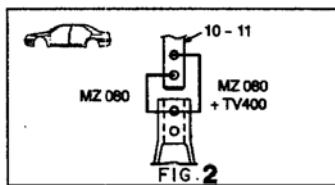
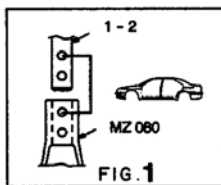
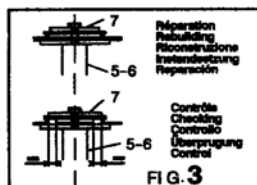
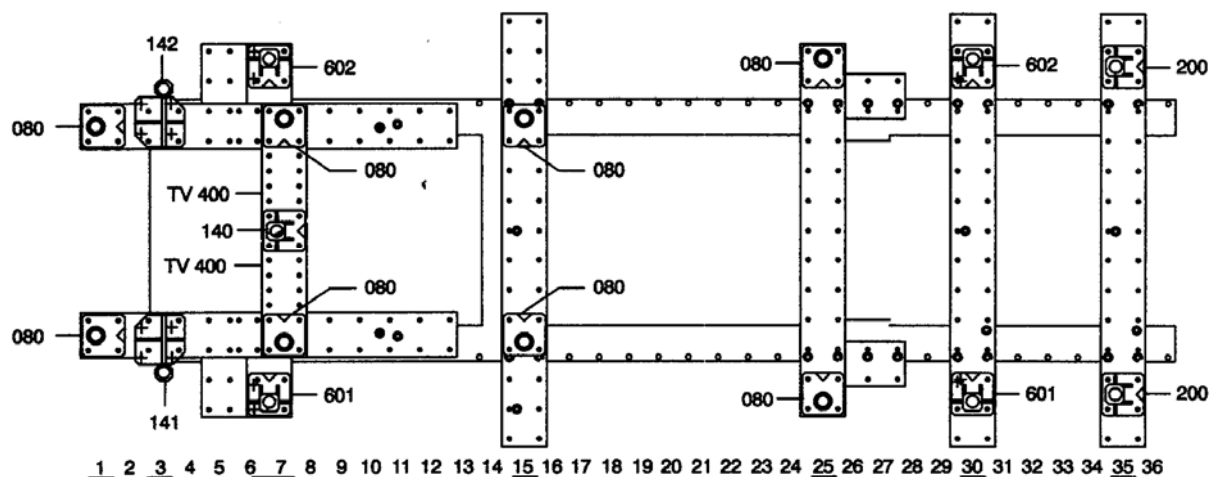
**MAZDA / FORD**

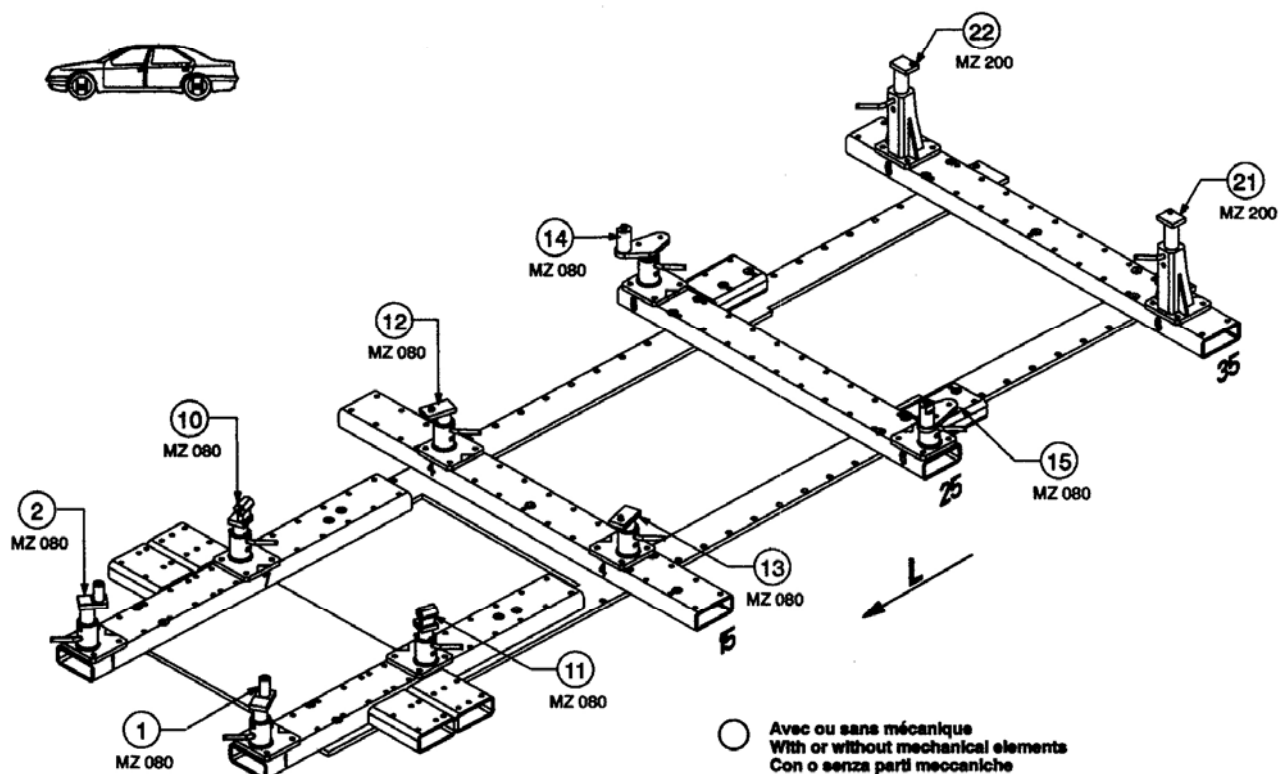
REP.	REFERENCE	PDS	NB	MZ
1	793.7001	1,8	1	080
2	793.7002	1,8	1	080
3	793.7003	1,8	1	141
4	793.7004	1,8	1	142
5	793.7005	2,3	1	801
6	793.7006	0,9	1	802
7	793.7007	2,3	2	
8	793.7008	2,8	1	140
9	793.7009	2,5	1	
10	793.7010	1,5	1	080
11	793.7011	1,5	1	080
12	793.7012	1,5	1	080
13	793.7013	1,5	1	080
14	793.7014	2,5	1	080
15	793.7015	2,5	1	080
16	793.7016	2,1	1	
17	793.7017	2,1	1	
18	793.7018	1,7	1	802
19	793.7019	1,7	1	801
20	793.7020	0,1	2	
21	793.7021	1,7	1	200
22	793.7022	1,7	1	200

	M 10x1,25-90	4
	M 10x1,25-40	4
	M 10x1,25-60	2
	M 10x1,25-90	2
	M 12x1,25-30	2
	M 10-35	4
	M 12-25	2
M 12-30	2	
	M 10	4


**793.300**

42 Kg	24.02.99	419-D-26A
-------	----------	-----------

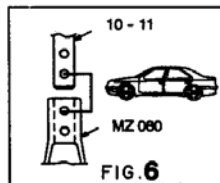
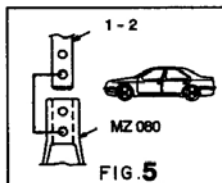
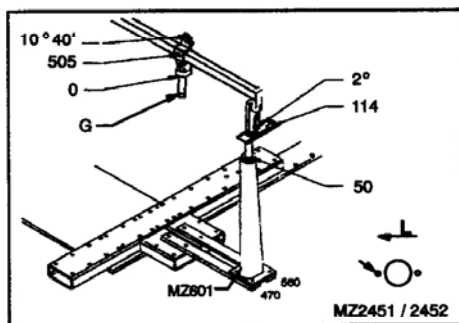
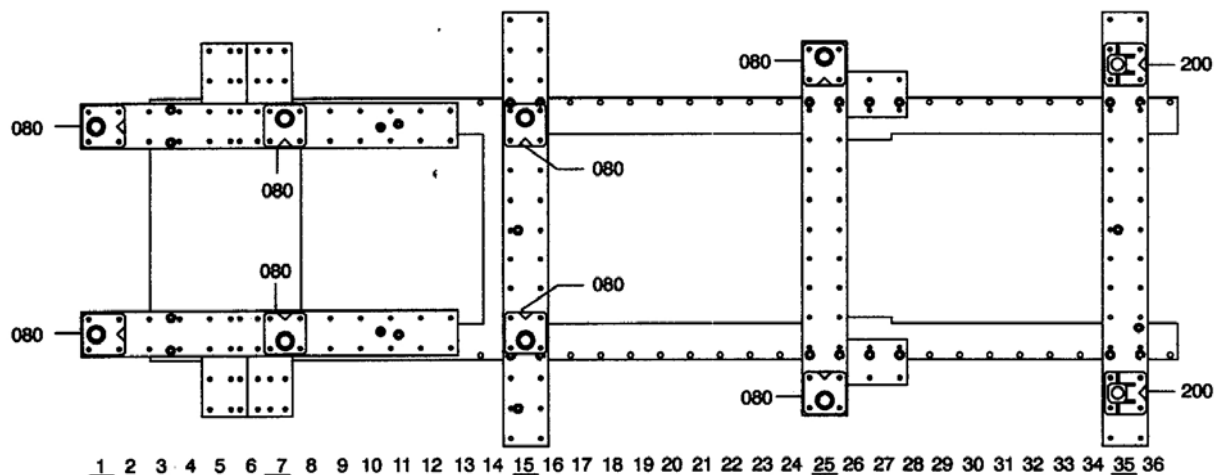


**CELETTE®****MAZDA DEMIO**  
DW3 / DW5**FORD****FESTIVA**  
MINIWAGON

○ Avec ou sans mécanique  
 With or without mechanical elements  
 Con o senza parti meccaniche  
 Mit oder ohne Aggregate  
 Con ó sin mecánica desmontada

**MAZDA / FORD****793.300**

42 Kg    24.02.99    419-D-26B

**CELETTE®**  
VIENNE-FRANCE

© Copyright 1999 CELETTE S.A. - All rights reserved. No part of this document may be reproduced in any form, by photostat, xerography or any other means, or incorporated into any informational retrieval system, electronic or mechanical, without the permission of the copyright owner.