

| REP. | REFERENCE | PDS | NB | MZ |
|------|-----------|------|----|-----|
| 1 | 779.7001 | 2,2 | 1 | 140 |
| 2 | 779.7002 | 2,2 | 1 | 140 |
| 3 | 779.7003 | 3,1 | 1 | 140 |
| 4 | 779.7004 | 3,7 | 1 | 141 |
| 5 | 779.7005 | 3,7 | 1 | 142 |
| 6 | 779.7006 | 2,7 | 1 | 260 |
| 7 | 779.7007 | 2,7 | 1 | 260 |
| 8 | 779.7008 | 1,9 | 1 | 602 |
| 9 | 779.7009 | 1,9 | 1 | 601 |
| 10 | 779.7010 | 1,0 | 2 | 080 |
| 11 | 779.7011 | 2,3 | 1 | 080 |
| 12 | 779.7012 | 2,3 | 1 | 080 |
| 13 | 779.7013 | 0,04 | 2 | 2 |
| 14 | 779.7014 | 2,9 | 1 | 080 |
| 15 | 779.7015 | 2,9 | 1 | 080 |
| 16 | 779.7016 | 2,1 | 1 | 140 |
| 17 | 779.7017 | 2,1 | 1 | 140 |
| 18 | 779.7018 | 2,7 | 1 | 200 |
| 19 | 779.7019 | 2,9 | 1 | 200 |
| 20 | 779.7020 | 2,3 | 1 | 260 |
| 21 | 779.7021 | 2,3 | 1 | 260 |
| | V.32 | 0,1 | 2 | |

| | |
|--------------|---|
| M 8-16 | 6 |
| M 8-30 | 2 |
| M 8-40 | 2 |
| M 12x125-80 | 8 |
| M 12x125-90 | 4 |
| M 12x125-130 | 2 |
| M 12x125-150 | 2 |

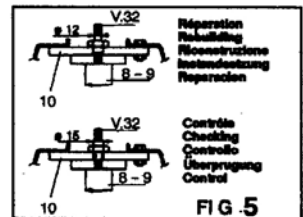
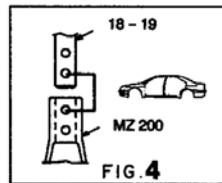
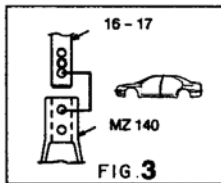
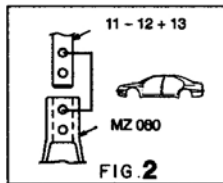
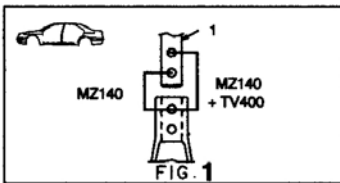
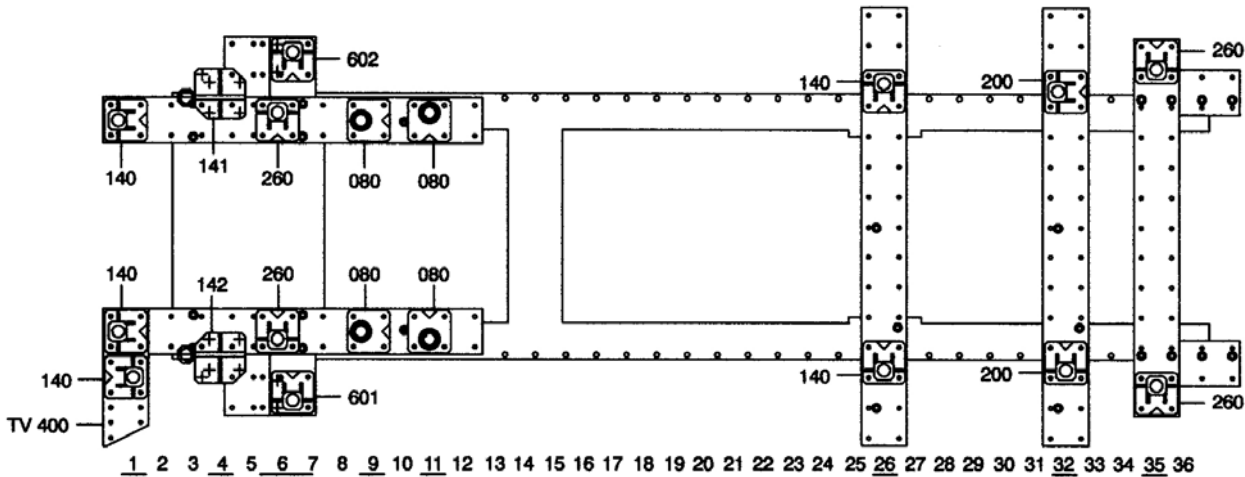
| | |
|-------|---|
| MU 12 | 2 |
|-------|---|

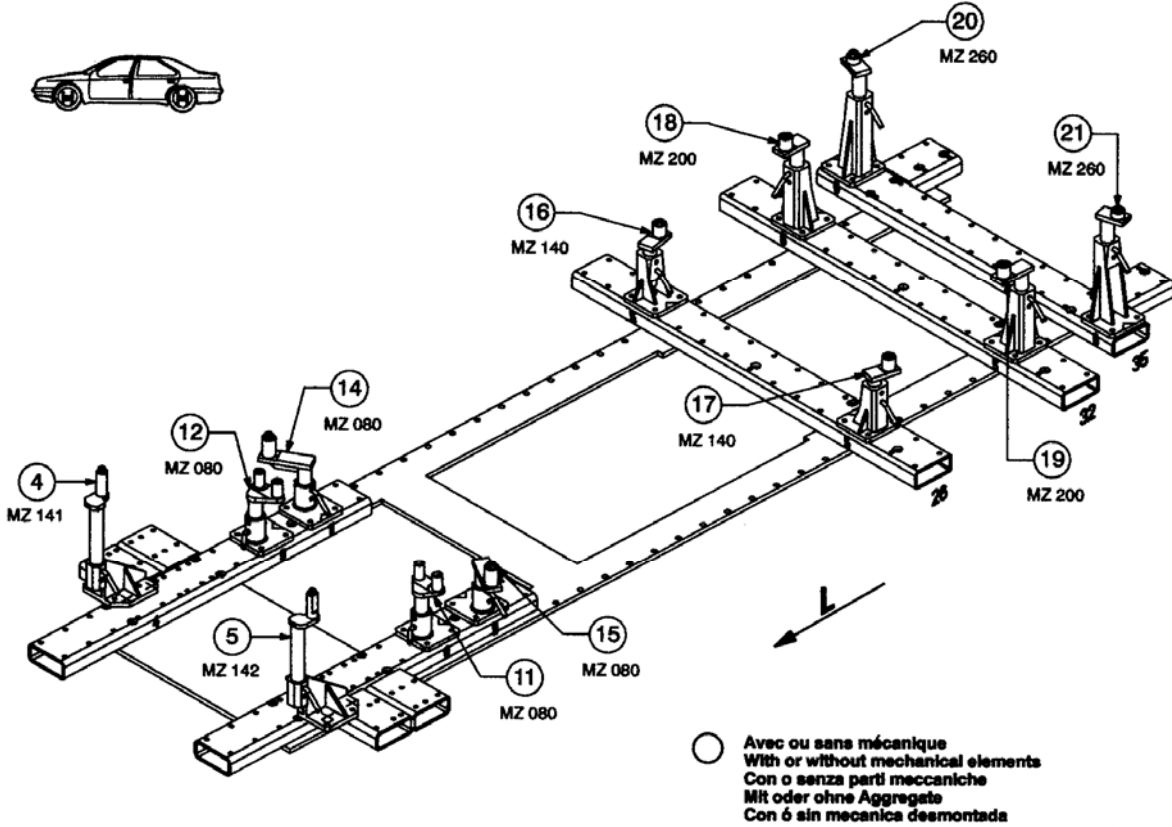
○ Avec ou sans mécanique
With or without mechanical elements
Con o senza parti meccaniche
Mit oder ohne Aggregate
Con ó sin mecánica desmontada

FIAT

779.300

52 Kg 14.05.98 411-D-17A





FIAT

779.300

52 Kg 14.05.98 411-D-17B

