

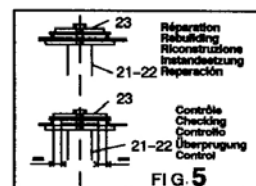
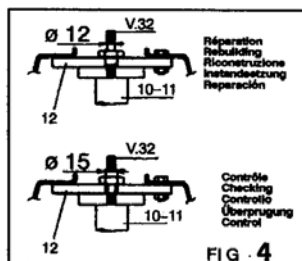
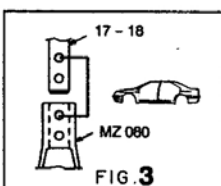
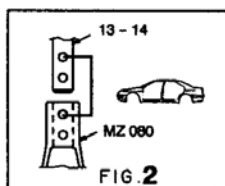
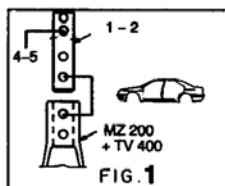
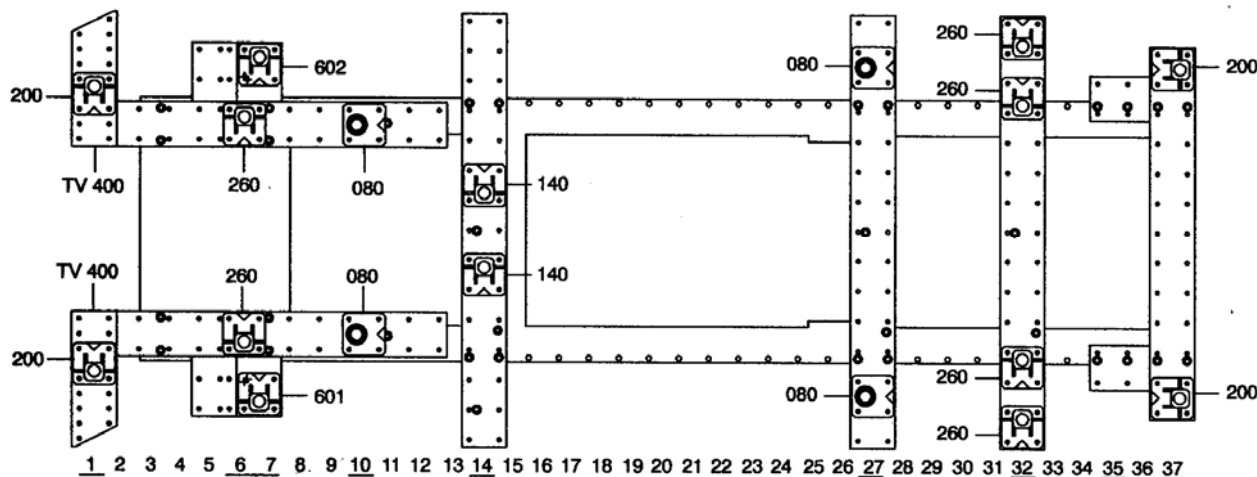
REP.	REFERENCE	PDS	NB	MZ
1	765.7001	4,2	1	200
2	765.7002	4,2	1	200
3	765.7003	0,15	2	
4	765.7004	1,8	1	
5	765.7005	1,8	1	
6	765.7006	2,0	1	260/080
7	765.7007	2,0	1	260/080
8	765.7008	0,4	2	
9	765.7008	0,5	2	
10	765.7010	2,6	1	602
11	765.7011	1,1	2	601
12	765.7012	1,1	2	
13	765.7013	2,9	1	080
14	765.7014	2,9	1	080
15	765.7015	1,8	1	140
16	765.7016	1,8	1	140
17	765.7017	2,2	1	080
18	765.7018	2,2	1	080
19	765.7019	2,0	1	260
20	765.7020	2,0	1	260
21	765.7021	3,8	1	260
22	765.7022	3,8	1	260
23	765.7023	0,4	2	
24	765.7024	3,1	1	200
25	765.7025	2,9	1	200
	B.70	0,1	2	2
	V.11	0,1	2	2
	V.32	0,1	2	2
	V.59	0,2	2	2

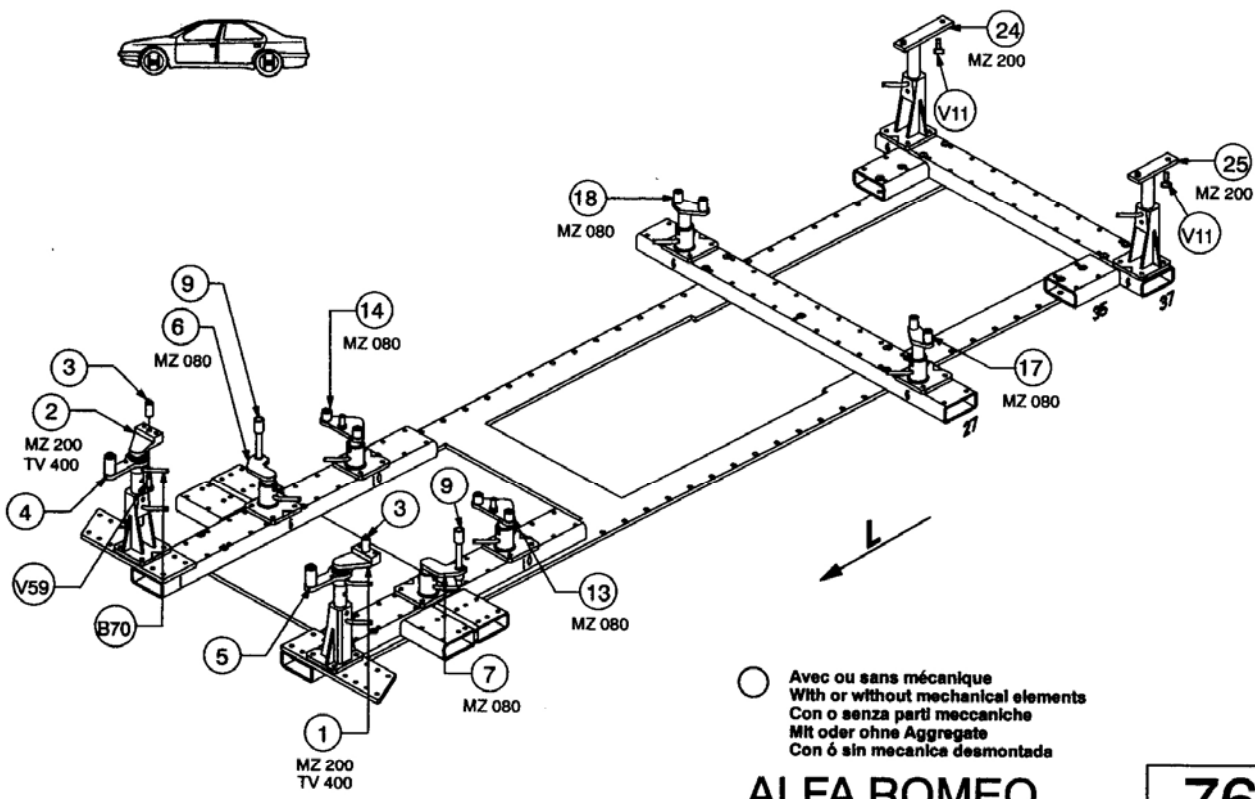
	M 8x25	4
	M 8x50	4
	M 12x30	8
	M 12x35	4
	M 10.125x60	6
	M 10.125x110	4
	M 10.125x80	2
	M 12.125x90	2
	M 8	2
	M 12	2
	MU 12	4
	MU 16	2

ALFA ROMEO

765.300

59 Kg 20.02.98 401-D-5A





○ Avec ou sans mécanique
 With or without mechanical elements
 Con o senza parti meccaniche
 Mit oder ohne Aggregate
 Con ó sin mecánica desmontada

ALFA ROMEO

765.300		
59 Kg	22.04.98	401-D-5B

