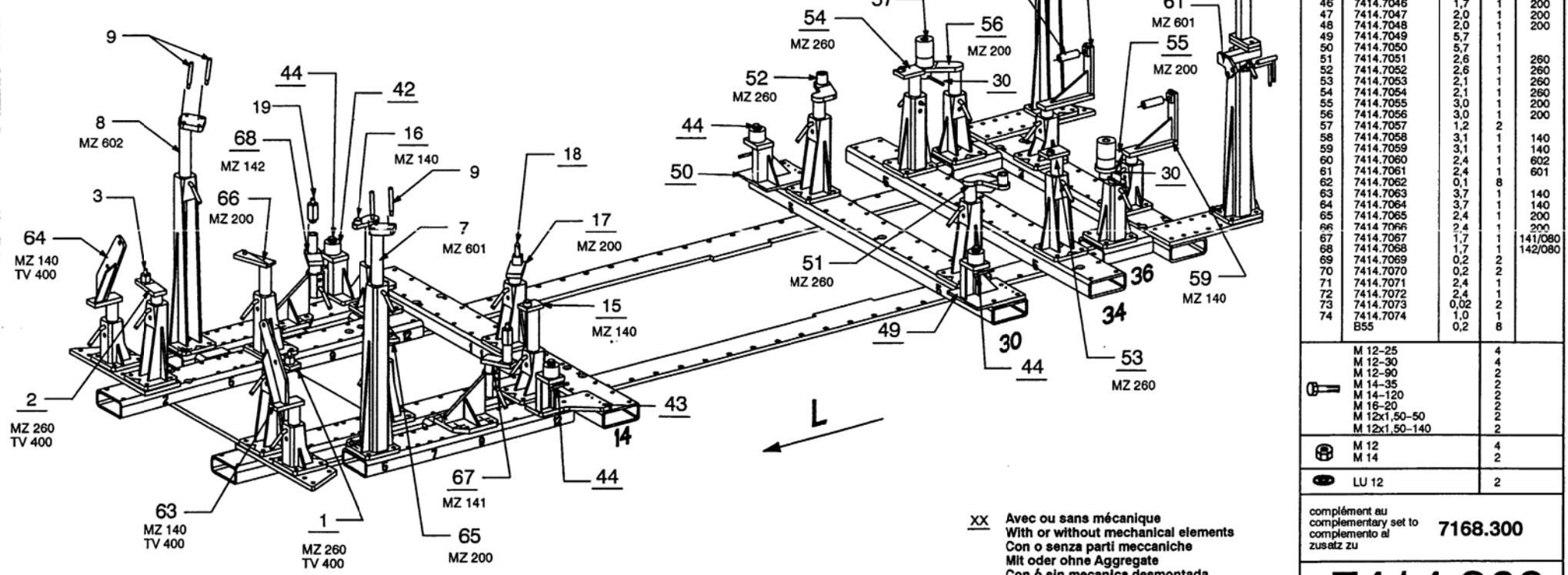
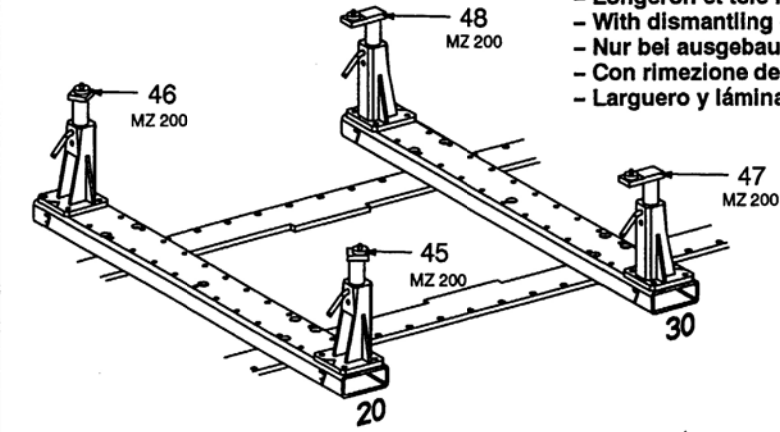


- Longeron et tole latérale déposés.
- With dismantling of the sidemember and lateral steel plate.
- Nur bei ausgebautem Längsträger und ausgebauter Seitenwand anwendbar.
- Con rimozione del longherone e della lamiera laterale.
- Larguero y lámina lateral desmontados.



REP.	REFERENCE	PDS	NB	MZ
42	7414.7042	6,0	1	
43	7414.7043	6,0	1	
44	7414.7044	0,2	4	
45	7414.7045	1,7	1	200
46	7414.7046	1,7	1	200
47	7414.7047	2,0	1	200
48	7414.7048	2,0	1	200
49	7414.7049	5,7	1	
50	7414.7050	5,7	1	
51	7414.7051	2,6	1	260
52	7414.7052	2,6	1	260
53	7414.7053	2,1	1	260
54	7414.7054	2,1	1	260
55	7414.7055	3,0	1	200
56	7414.7056	3,0	1	200
57	7414.7057	1,2	2	
58	7414.7058	3,1	1	140
59	7414.7059	3,1	1	140
60	7414.7060	2,4	1	602
61	7414.7061	2,4	1	601
62	7414.7062	0,1	8	
63	7414.7063	3,7	1	140
64	7414.7064	3,7	1	140
65	7414.7065	2,4	1	200
66	7414.7066	2,4	1	200
67	7414.7067	1,7	1	141/080
68	7414.7068	1,7	1	142/080
69	7414.7069	0,2	2	
70	7414.7070	0,2	2	
71	7414.7071	2,4	1	
72	7414.7072	2,4	1	
73	7414.7073	0,02	2	
74	7414.7074	1,0	1	
	B55	0,2	8	

M 12-25	4
M 12-30	4
M 12-90	2
M 14-35	2
M 14-120	2
M 18-20	2
M 12x1,50-50	2
M 12x1,50-140	2
M 12	4
M 14	2
LU 12	2

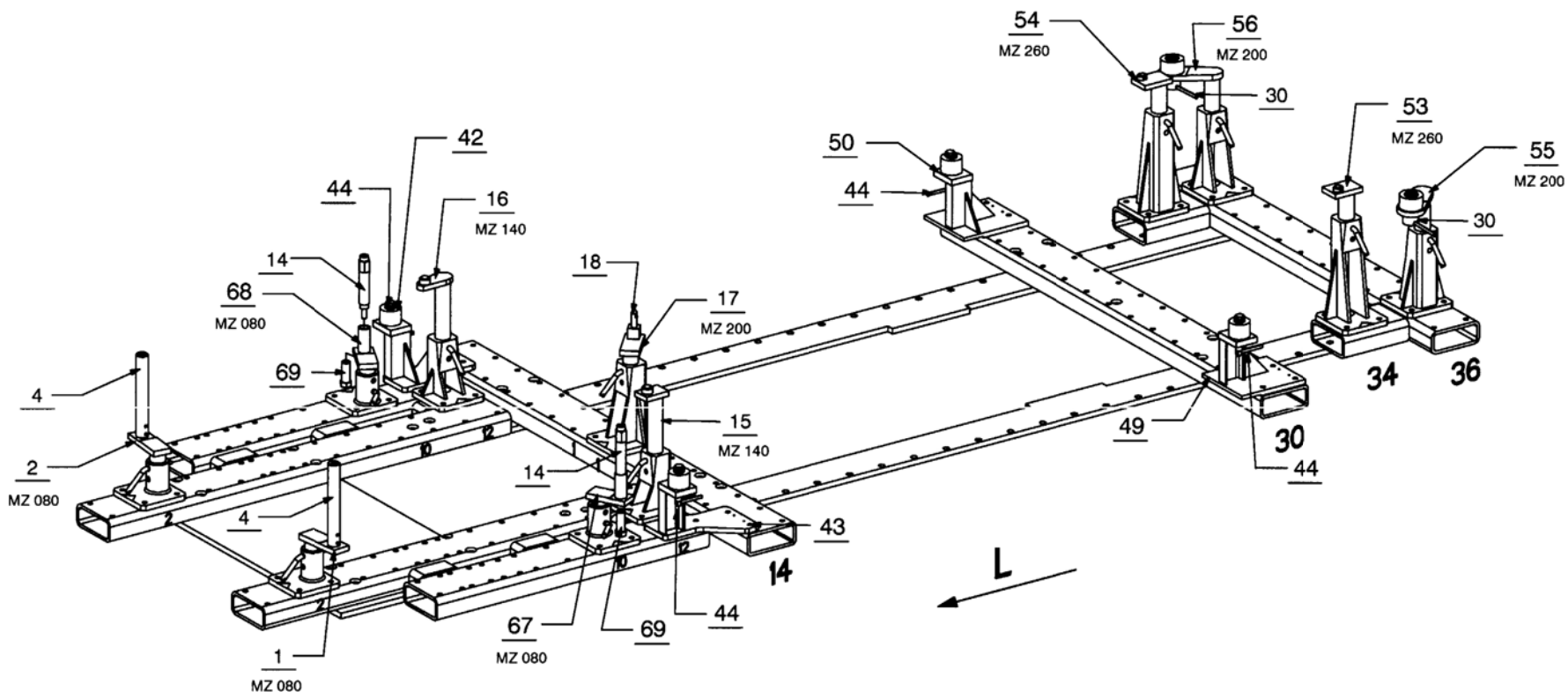
XX Avec ou sans mécanique  
With or without mechanical elements  
Con o senza parti meccaniche  
Mit oder ohne Aggregate  
Con ó sin mecanica desmontada

complément au  
complementary set to  
complemento al  
zusatz zu **7168.300**

# 7414.309

## MERCEDES BENZ

86 Kg	29.01.2003	420-D-24A
-------	------------	-----------

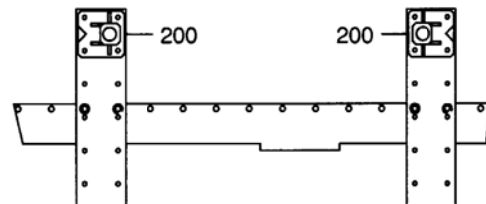
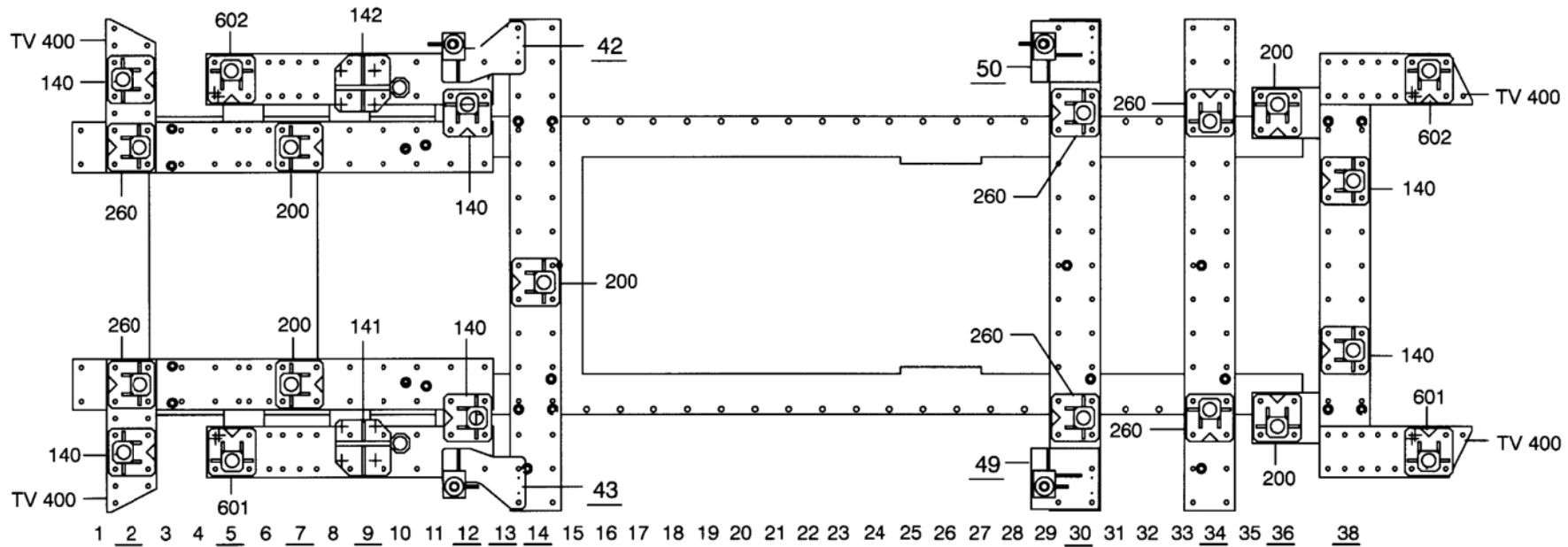


XX Avec ou sans mécanique  
 With or without mechanical elements  
 Con o senza parti meccaniche  
 Mit oder ohne Aggregate  
 Con ó sin mecánica desmontada

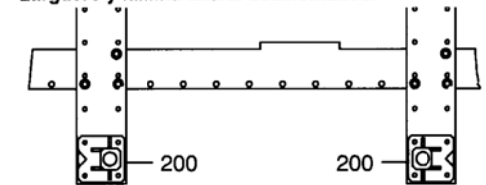
**MERCEDES BENZ**

**7414.309**

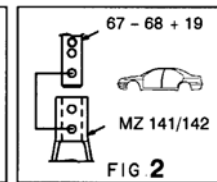
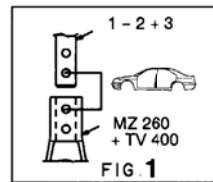
86 Kg | 14.11.2001 | 420-D-24B



- Longeron et toile latérale déposés.
- With dismantling of the sidemember and lateral steel plate.
- Nur bei ausgebautem Längsträger und ausgebauter Seitenwand anwendbar.
- Con rimozione del longherone e della lamiera laterale.
- Larguero y lámina lateral desmontados.



19 20 21 22 23 24 25 26 27 28 29 30 31

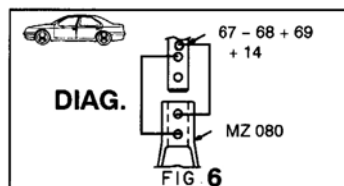
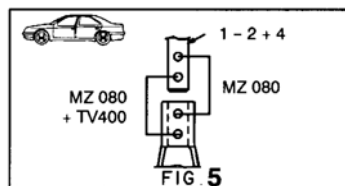
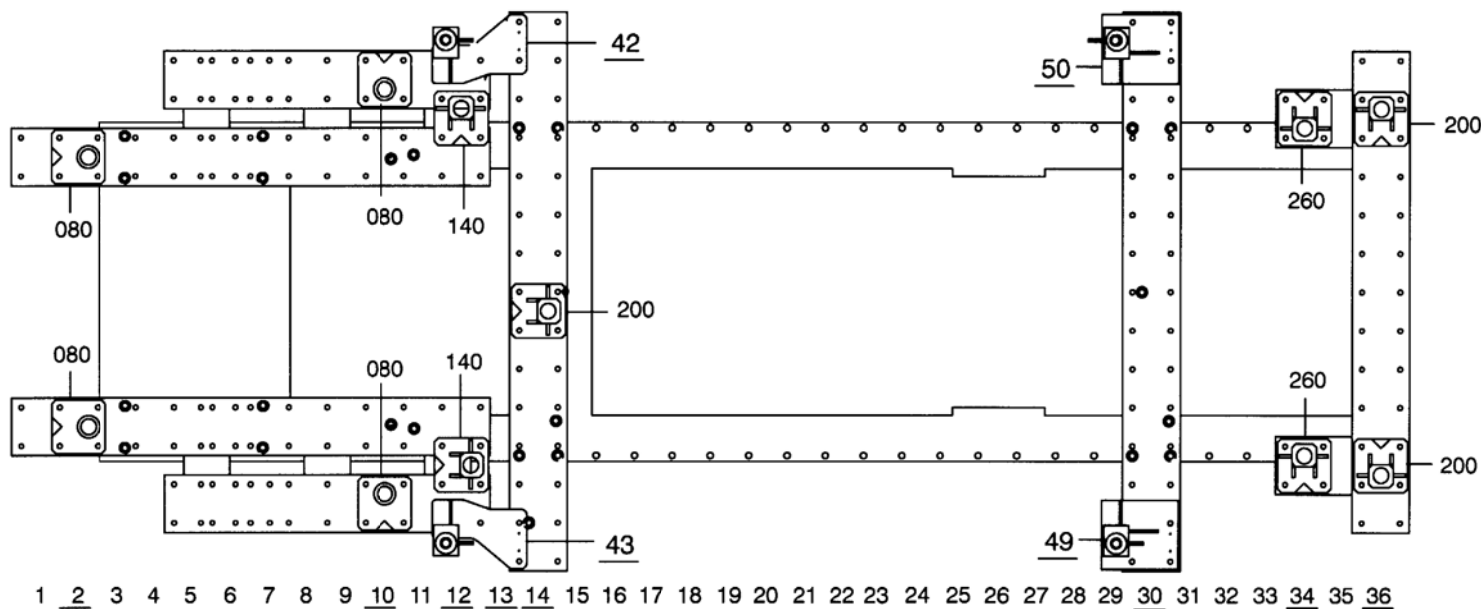


XX Avec ou sans mécanique  
With or without mechanical elements  
Con o senza parti meccaniche  
Mit oder ohne Aggregate  
Con ó sin mecanica desmontada

### MERCEDES BENZ

# 7414.309

86 Kg | 14.11.2001 | 420-D-24C



XX Avec ou sans mécanique  
With or without mechanical elements  
Con o senza parti meccaniche  
Mit oder ohne Aggregate  
Con ó sin mecanica desmontada

**MERCEDES BENZ**

<b>7414.309</b>		
86 Kg	14.11.2001	420-D-24D

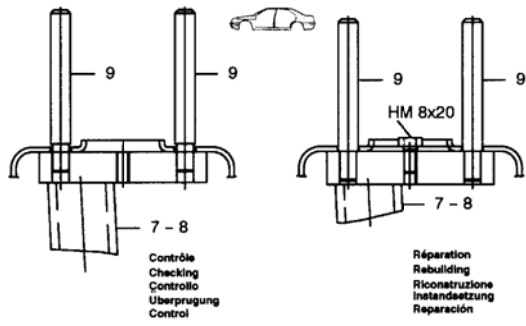


FIG. 4

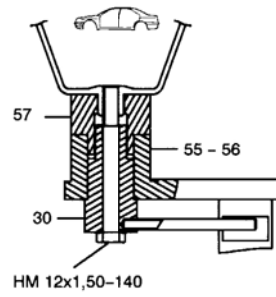


FIG. 3

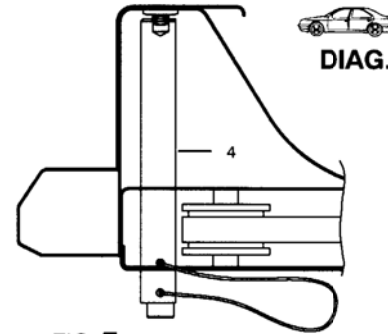


FIG. 7

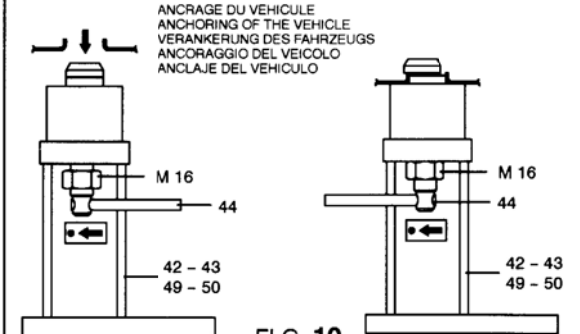


FIG. 10

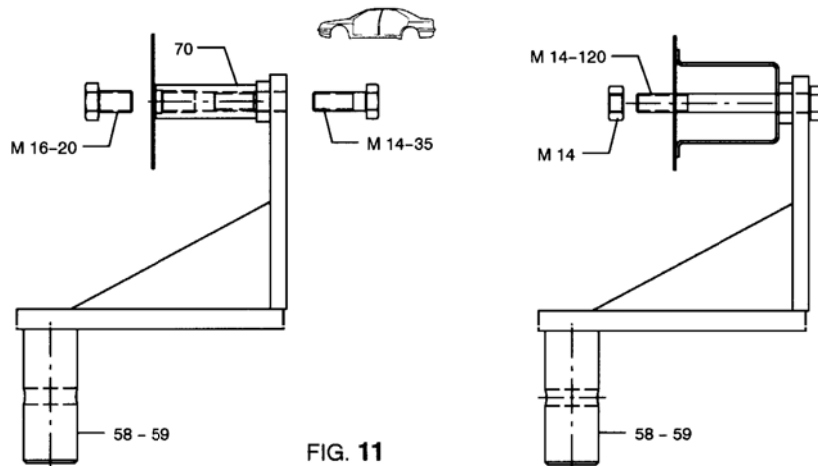


FIG. 11

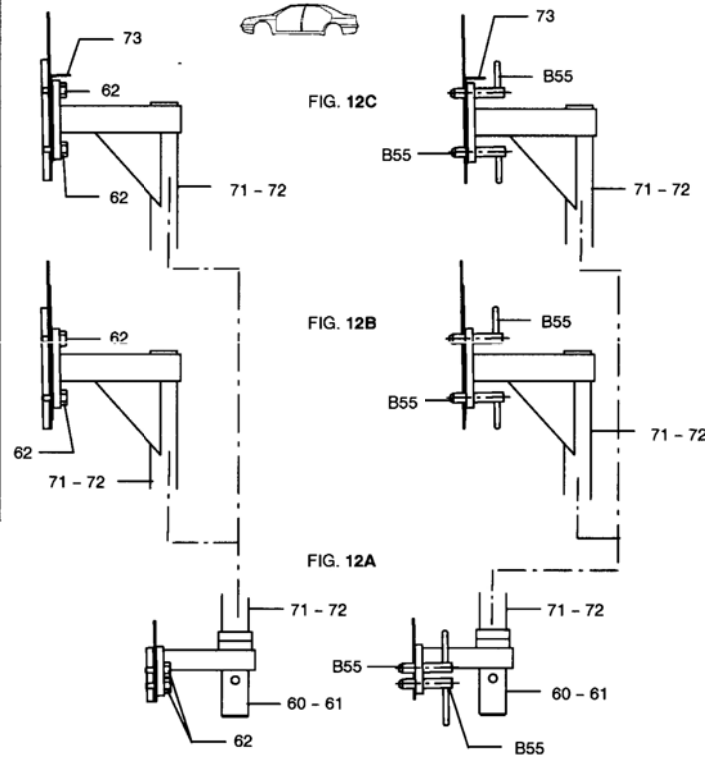


FIG. 12

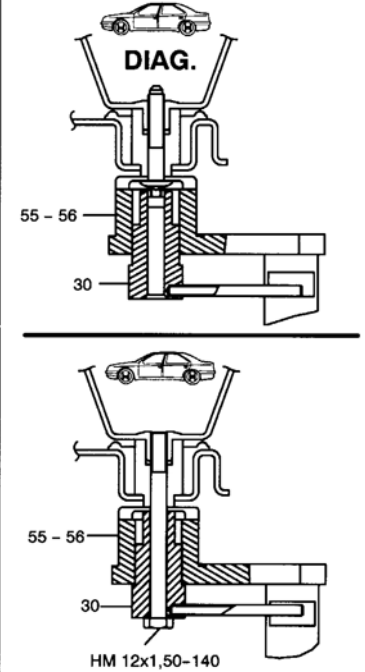


FIG. 9

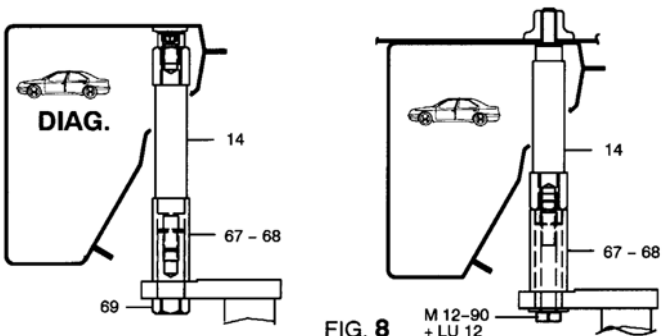


FIG. 8

**MERCEDES BENZ**

**7414.309**

86 Kg | 14.11.2001 | 420-D-24E