

○ Avec ou sans mécanique  
 With or without mechanical elements  
 Con o senza parti meccaniche  
 Mit oder ohne Aggregate  
 Con ó sin mecánica desmontada

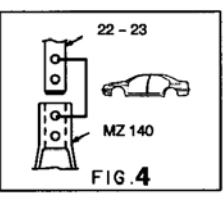
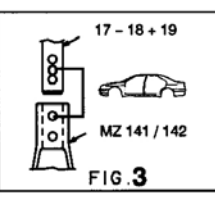
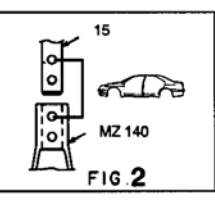
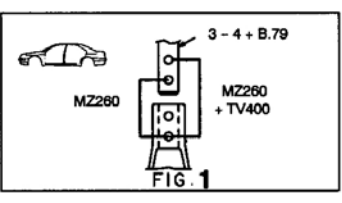
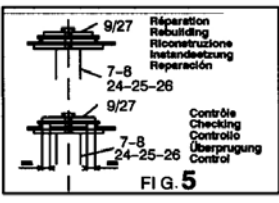
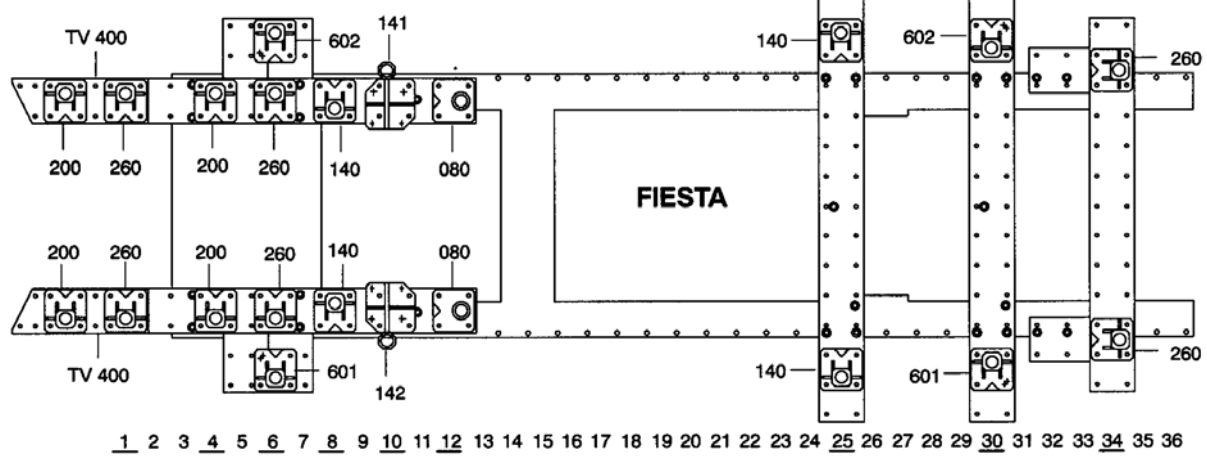
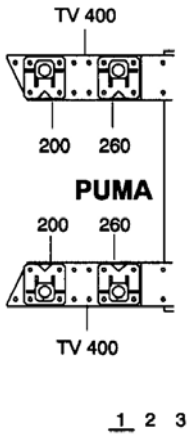
## FORD

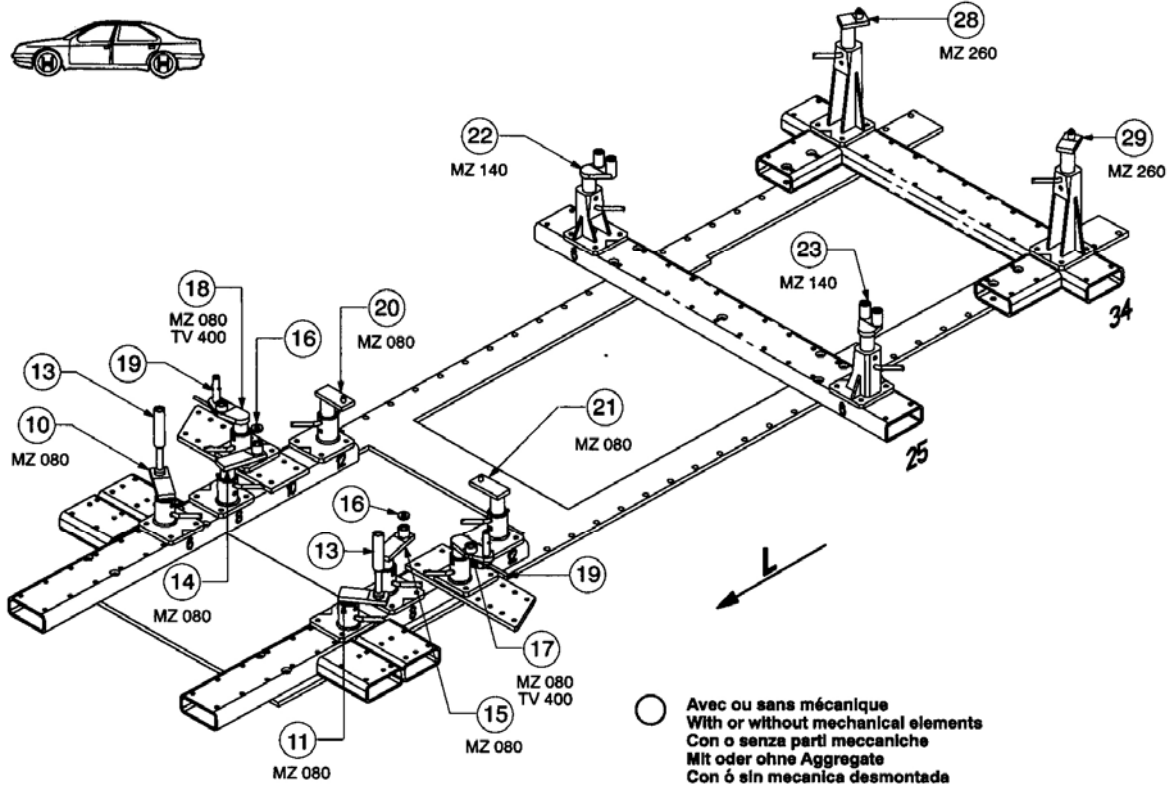
| REP. | REFERENCE | PDS  | NB | MZ      |
|------|-----------|------|----|---------|
| 1    | 720.7001  | 1,8  | 1  | 200     |
| 2    | 720.7002  | 1,8  | 1  | 200     |
| 3    | 720.7003  | 1,7  | 1  | 260     |
| 4    | 720.7004  | 1,7  | 1  | 260     |
| 5    | 720.7005  | 2,3  | 1  | 200     |
| 6    | 720.7006  | 3,6  | 1  | 200     |
| 7    | 720.7007  | 1,7  | 1  | 601     |
| 8    | 720.7008  | 1,7  | 1  | 602     |
| 9    | 720.7009  | 0,3  | 2  |         |
| 10   | 720.7010  | 1,7  | 1  | 260/080 |
| 11   | 720.7011  | 1,7  | 1  | 260/080 |
| 12   | 720.7012  | 0,5  | 2  |         |
| 13   | 720.7013  | 0,9  | 2  |         |
| 14   | 720.7014  | 1,8  | 1  | 140/080 |
| 15   | 720.7015  | 1,8  | 1  | 140/080 |
| 16   | 720.7016  | 0,04 | 2  |         |
| 17   | 720.7017  | 1,9  | 1  | 142/080 |
| 18   | 720.7018  | 1,9  | 1  | 141/080 |
| 19   | 720.7019  | 0,3  | 2  |         |
| 20   | 720.7020  | 1,2  | 1  | 080     |
| 21   | 720.7021  | 1,2  | 1  | 080     |
| 22   | 720.7022  | 2,2  | 1  | 140     |
| 23   | 720.7023  | 2,2  | 1  | 140     |
| 24   | 720.7024  | 1,6  | 1  | 602     |
| 25   | 720.7025  | 1,6  | 1  | 601     |
| 26   | 720.7026  | 0,5  | 2  |         |
| 27   | 720.7027  | 0,3  | 2  |         |
| 28   | 720.7028  | 1,1  | 1  | 260     |
| 29   | 720.7029  | 1,1  | 1  | 260     |
| 30   | 720.7030  | 0,1  | 2  |         |
|      | B.79      | 0,2  | 2  |         |

|          |   |
|----------|---|
| M 8x25   | 2 |
| M 10x25  | 2 |
| M 10x80  | 4 |
| M 12x20  | 2 |
| M 12x25  | 4 |
| M 12x60  | 4 |
| M 12x120 | 4 |
| M 14x35  | 2 |
| M 14x90  | 2 |
| M 14     | 2 |
| M 12     | 2 |

## 720.310

47 Kg    05.12.97    412-D-20D





○ Avec ou sans mécanique  
 With or without mechanical elements  
 Con o senza parti meccaniche  
 Mit oder ohne Aggregate  
 Con ó sin mecanica desmontada

**FORD**

**720.310**

47 Kg    05.12.97    412-D-20E

