

○ Avec ou sans mécanique
 With or without mechanical elements
 Con o senza parti meccaniche
 Mit oder ohne Aggregate
 Con ó sin mecánica desmontada

LANCIA

REP.	REFERENCE	PDS	NB	MZ
1	710.7001	2,5	1	200
2	710.7002	2,5	1	200
3	710.7003	2,2	1	142/080
4	710.7004	2,2	1	141/080
5	710.7005	2,8	1	601
6	710.7006	2,8	1	602
7	710.7007	1,4	2	
8	710.7008	2,4	1	140/080
9	710.7009	2,4	1	140/080
10	710.7010	2,5	1	080
11	710.7011	2,5	1	080
12	710.7012	0,4	2	
13	710.7013	2,1	1	140/080
14	710.7014	2,1	1	140/080
15	710.7015	0,6	2	
16	710.7016	0,3	2	
17	710.7017	3,5	1	601
18	710.7018	3,5	1	602
19	710.7019	0,7	2	
20	710.7020	1,6	1	280/140
21	710.7021	1,6	1	280/140
22	710.7022	0,6	2	
23	710.7023	2,9	1	200
24	710.7024	2,9	1	200
25	710.7025	2,4	1	260
26	710.7026	2,4	1	260
	V.26	0,1	4	

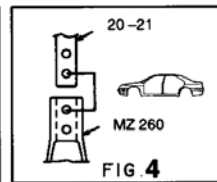
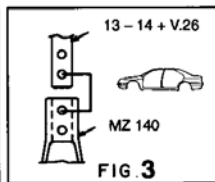
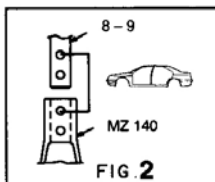
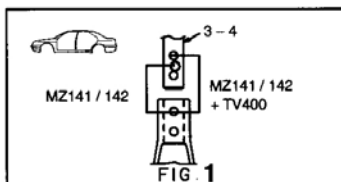
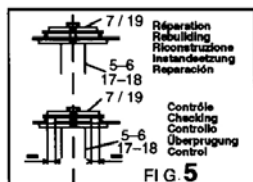
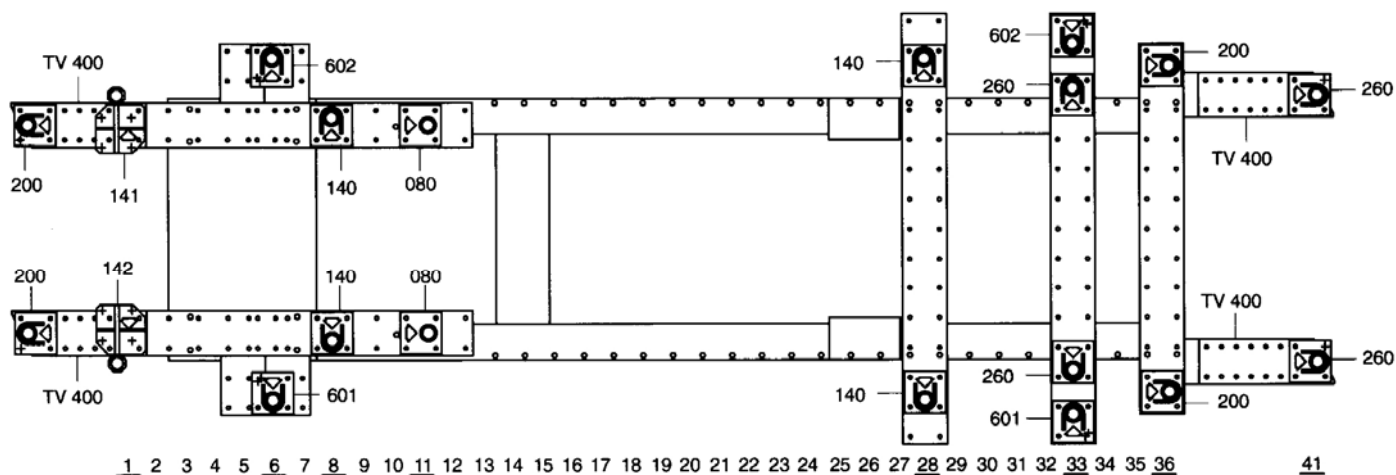
M 8x140	4
M 10x20	4
M 10.125x60	6
M 12x30	4
M 12.125x70	4
M 12.125x80	6
M 12.125x110	2
M 12.125x130	2
M 16x100	2

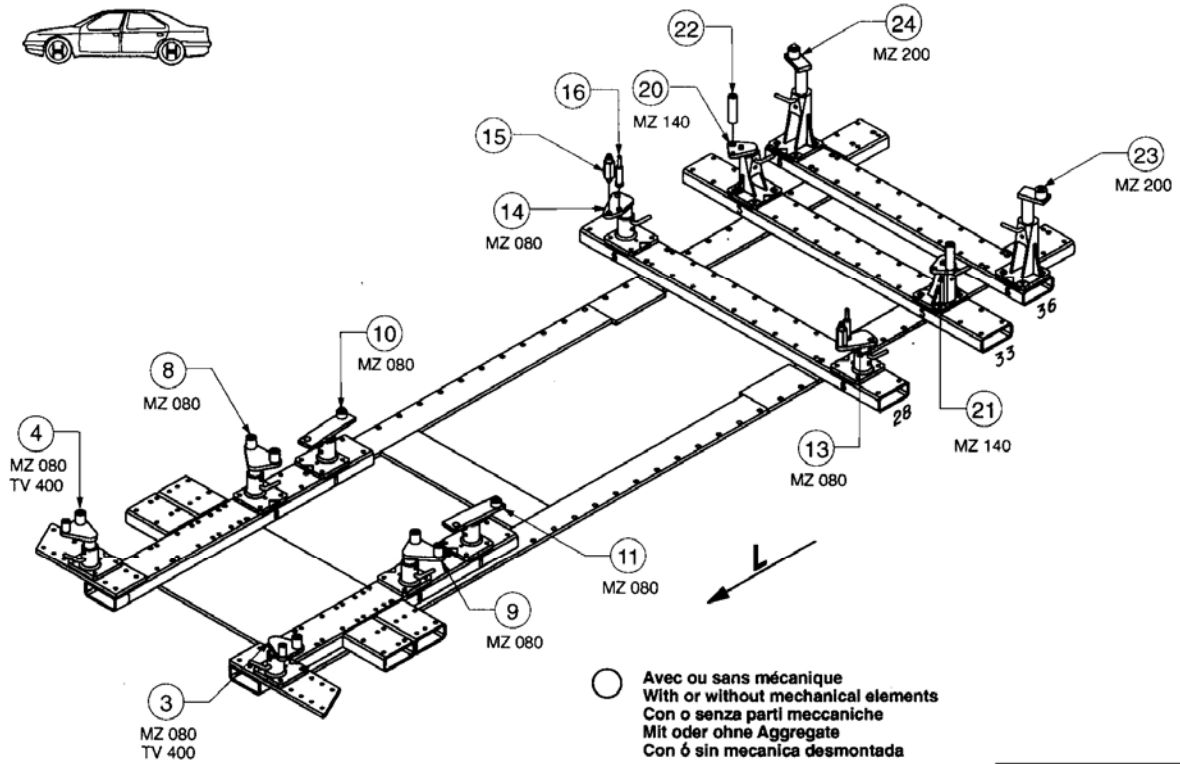
M 8	4
M 16	2

L 12	2
------	---

710.300

60 Kg 13.04.95 417-D-5A





LANCIA

710.300

60 Kg	13.04.95	417-D-5B
-------	----------	----------

