

REP.	REFERENCE	PDS	NB	MZ
1	684.701	2,7	1	080
2	684.702	0,02	2	
3	684.703	3,4	1	140
4	684.704	3,4	1	140
5	684.705	4,8	1	260
6	684.706	4,8	1	260
7	684.707	2,4	1	260
8	684.708	2,4	1	260
9	684.709	1,8	1	601
10	684.710	1,8	1	602
11	684.711	2,2	1	080
12	684.712	2,2	1	080
13	684.713	0,2	2	
14	684.714	1,7	1	080
15	684.715	1,7	1	080
16	684.716	1,9	1	140
17	684.717	1,9	1	140
18	684.718	1,5	1	200
19	684.719	1,5	1	200
20	684.720	0,1	2	
21	684.721	0,2	2	
22	684.722	2,2	1	602
23	684.723	2,2	1	601
24	684.724	2,1	1	260
25	684.725	2,1	1	260
26	684.726	3,1	1	602
27	684.727	3,1	1	601
28	684.728	3,6	1	142
29	684.729	3,6	1	141
30	684.730	0,5	2	
	D.075	0,5	2	

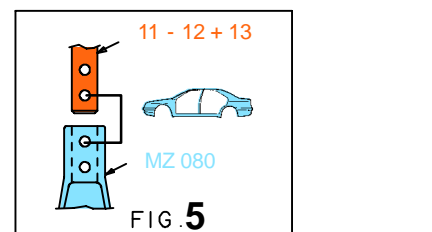
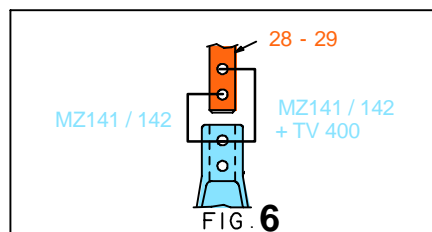
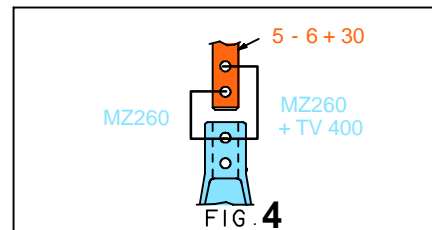
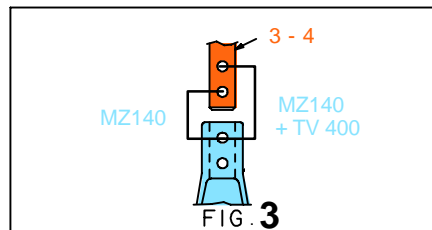
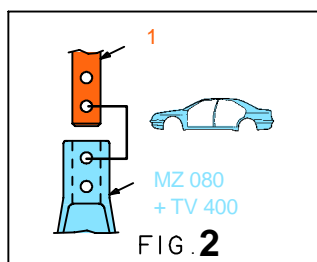
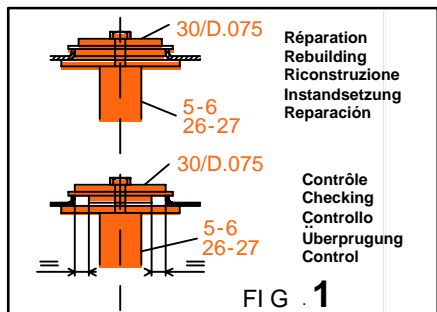
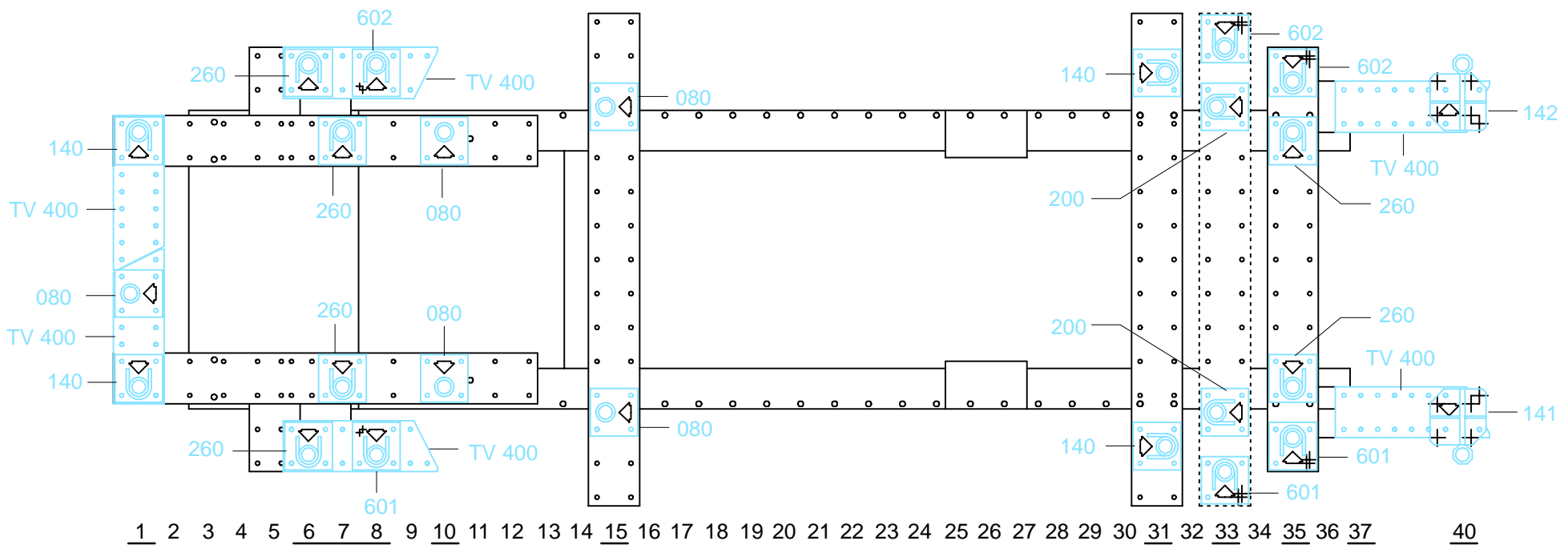
M 12x25	4
M 12.125x16	2
M 12.125x90	2
M 12.125x110	2
M 14.150x80	4
M 14.150x100	2

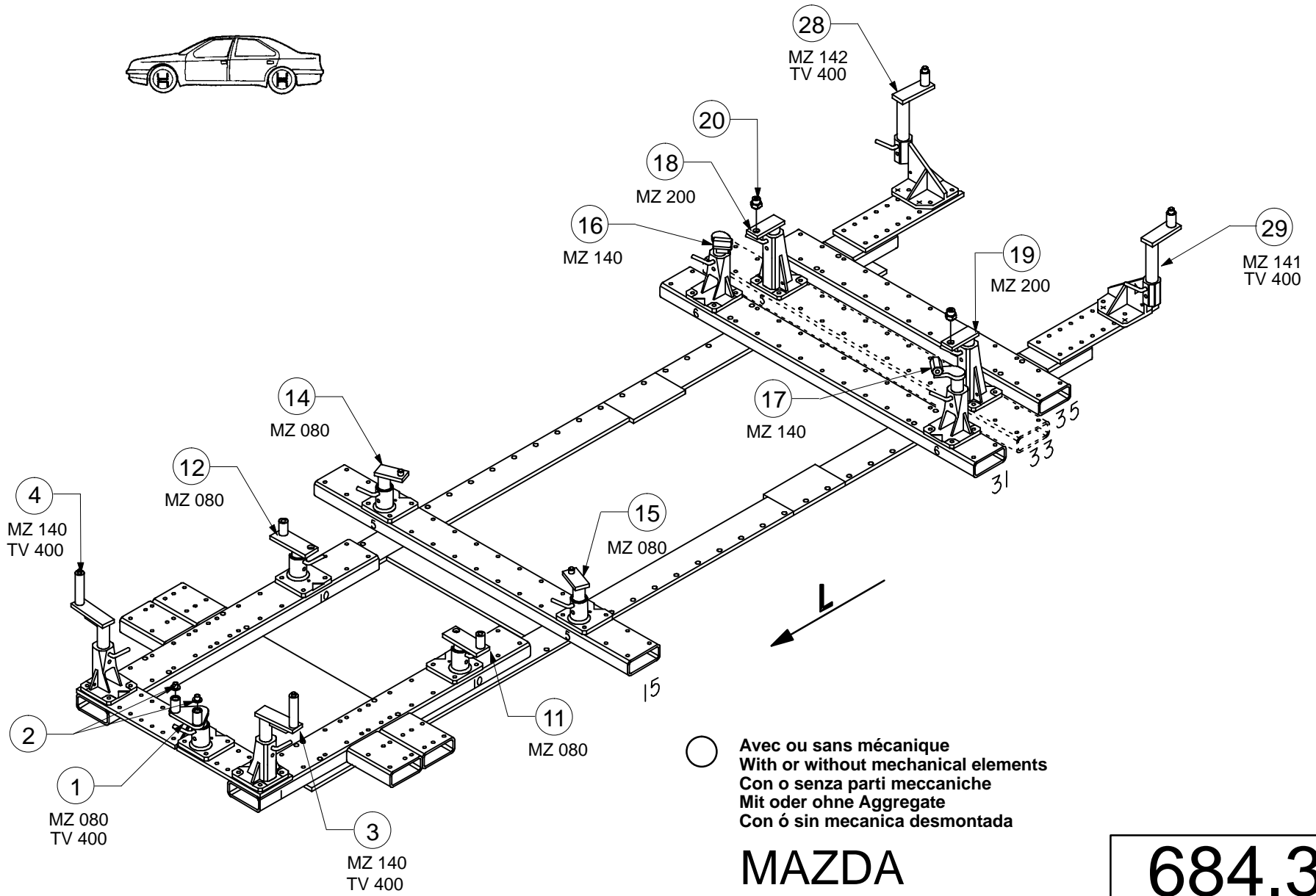
○ Avec ou sans mécanique
 With or without mechanical elements
 Con o senza parti meccaniche
 Mit oder ohne Aggregate
 Con ó sin mecanica desmontada

MAZDA

684.300

68 Kg 12.04.94 419-D-23A





MAZDA

684.300

68 Kg | 17.02.94 | 419-D-23B

