

○ Avec ou sans mécanique
 With or without mechanical elements
 Con o senza parti meccaniche
 Mit oder ohne Aggregate
 Con ó sin mecánica desmontada

MITSUBISHI

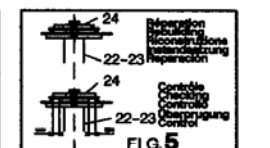
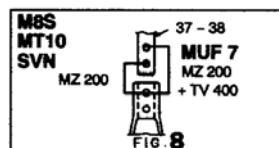
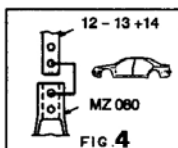
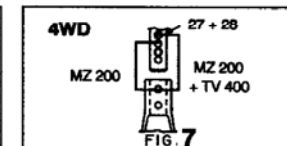
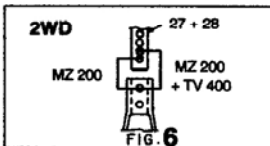
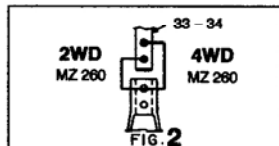
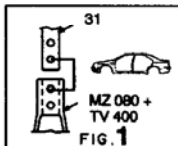
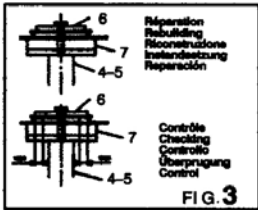
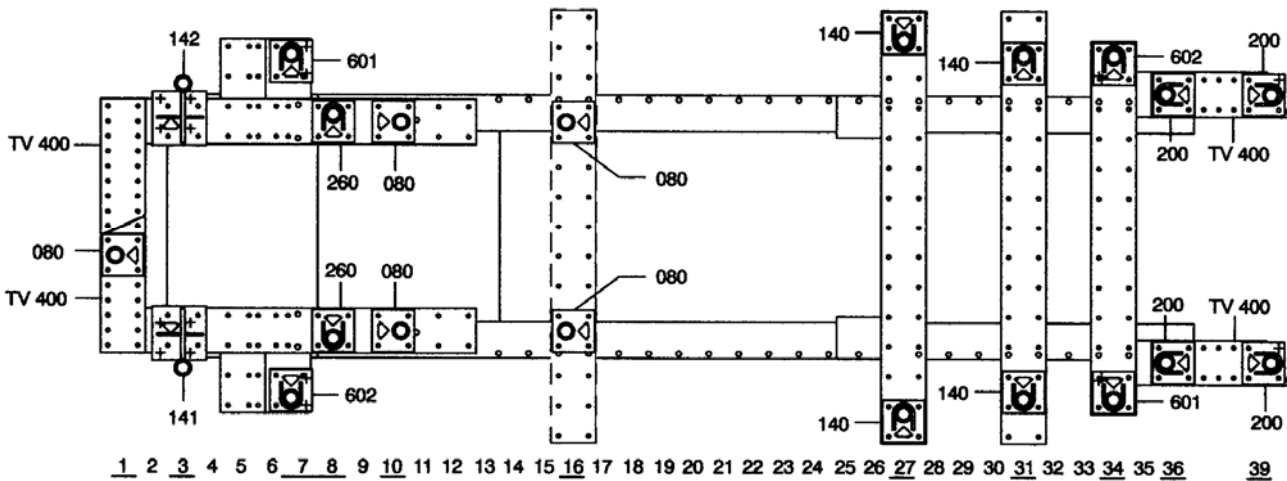
REP.	REFERENCE	PDS	NB	MZ
31	674.731	3,2	1	080
32	674.732	1,9	1	142
33	674.733	2,4	1	260
34	674.734	2,5	1	260
35	674.735	1,2	1	140
36	674.736	1,2	1	140
37	674.737	3,8	1	200
38	674.738	3,8	1	200

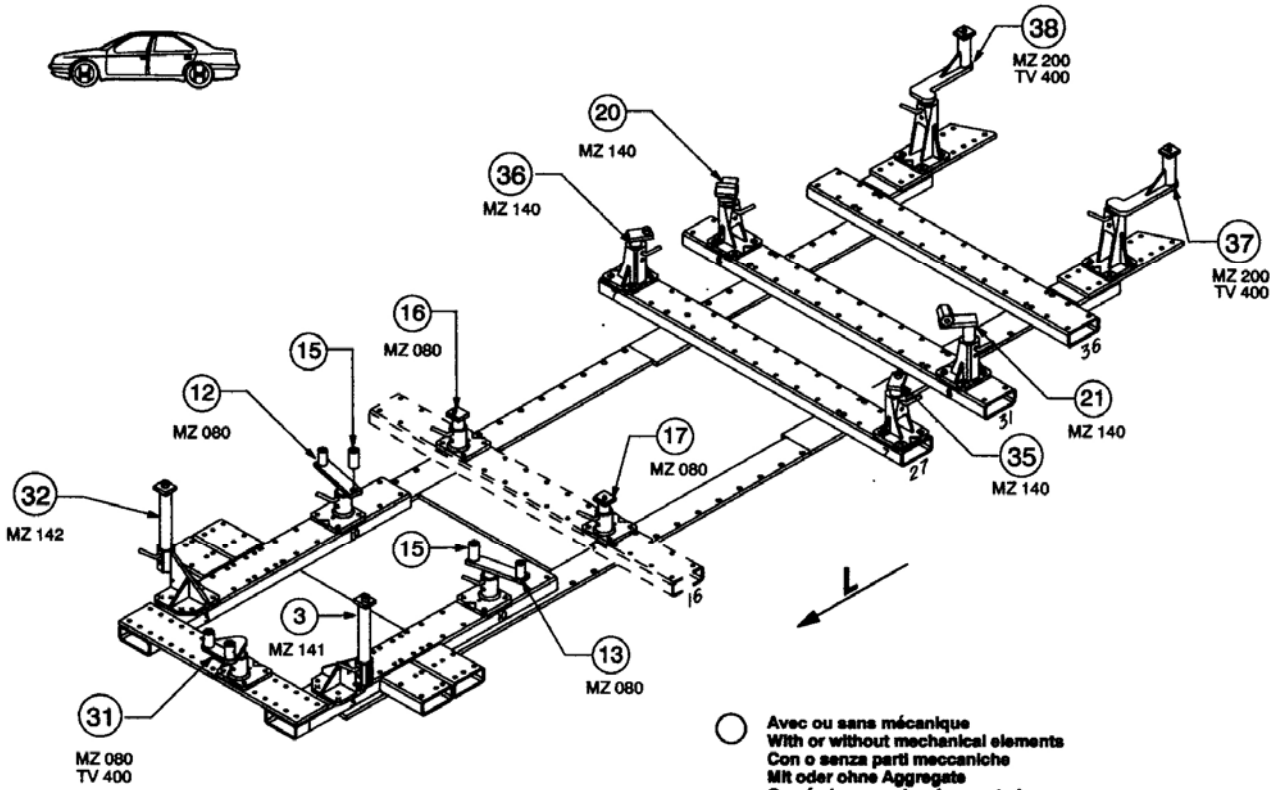
complément au
 complementary set to
 complemento al
 zusatz zu

674.300

674.309

20 Kg | 08.04.98 | 421-D-18C





○ Avec ou sans mécanique
With or without mechanical elements
Con o senza parti meccaniche
Mit oder ohne Aggregate
Con ó sin mecanica desmontada

MITSUBISHI

674.309

20 Kg 08.04.98 421-D-18D

