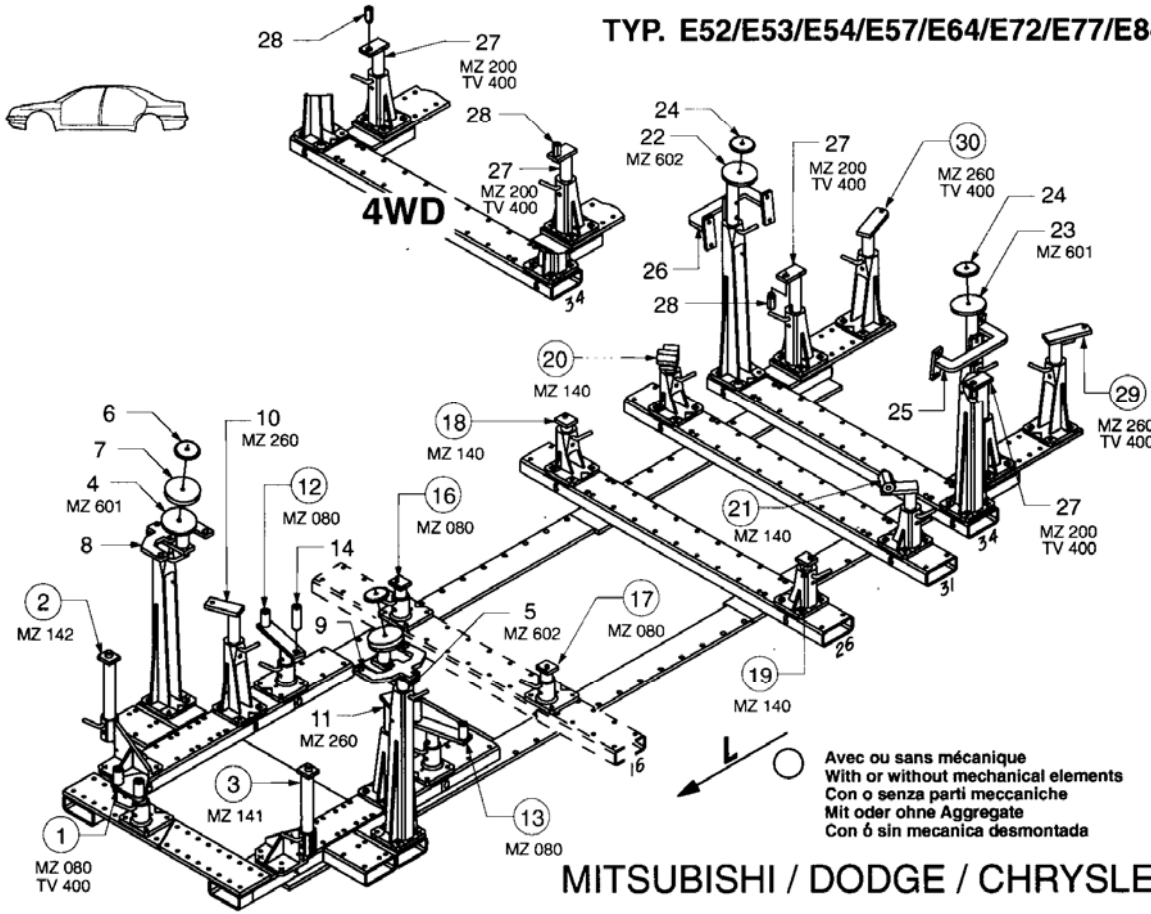


TYP. E52/E53/E54/E57/E64/E72/E77/E84

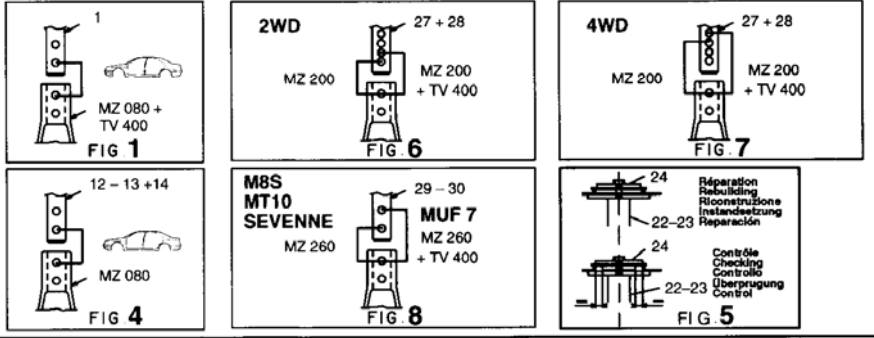
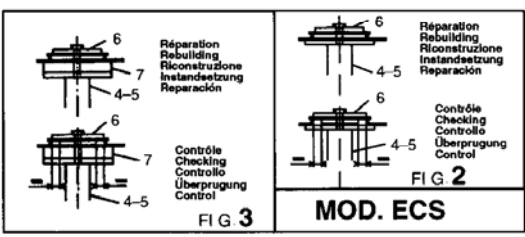
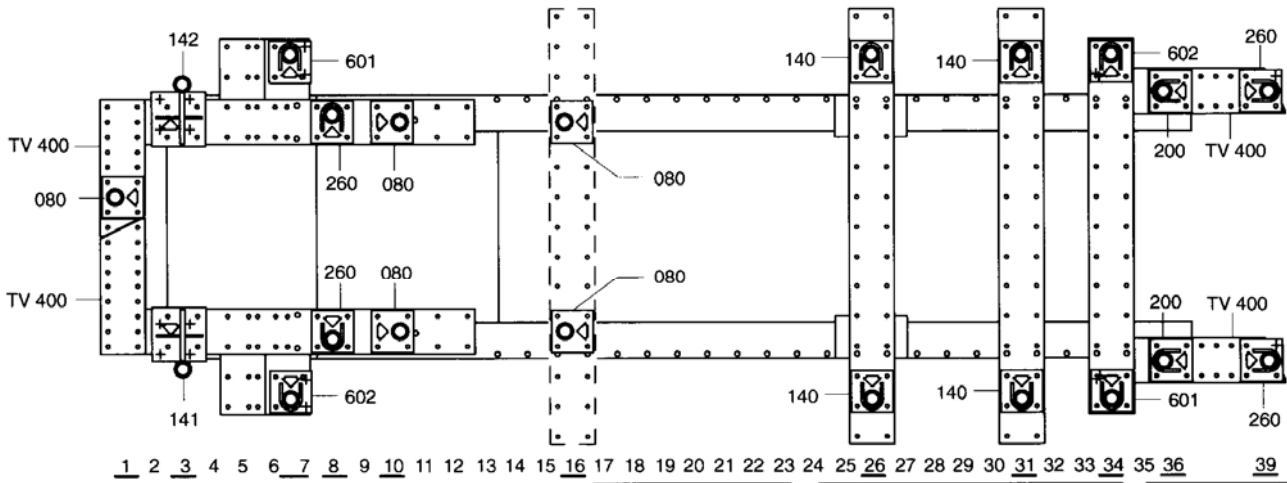


REP.	REFERENCE	PDS	NB	MZ
1	674.701	3,2	1	080
2	674.702	3,4	1	142
3	674.703	3,4	1	141
4	674.704	3,5	1	601
5	674.705	3,5	1	602
6	674.706	0,5	2	
7	674.707	1,6	2	
8	674.708	1,7	1	
9	674.709	1,7	1	
10	674.710	2,4	1	260
11	674.711	2,5	1	260
12	674.712	2,5	1	080
13	674.713	2,5	1	080
14	674.714	0,4	2	
15	674.715	0,4	2	
16	674.716	1,3	1	080
17	674.717	1,3	1	080
18	674.718	1,2	1	140
19	674.719	1,2	1	140
20	674.720	2,8	1	140
21	674.721	2,8	1	140
22	674.722	3,5	1	602
23	674.723	3,5	1	601
24	674.724	0,5	2	
25	674.725	3,2	1	
26	674.726	3,2	1	
27	674.727	2,5	2	200
28	674.728	0,1	2	
29	674.729	2,7	1	260
30	674.730	2,7	1	260

	M 10. 125x30	4
	M 12x30	8
	M 12x40	4
	M 12x45	2
	M 12. 125x16	2
	M 12. 125x110	2
	M 12. 125x120	2
	M 12. 125x150	4
	CHc 18x90	4
	M 12	4
	M 18	4
	M 12	2

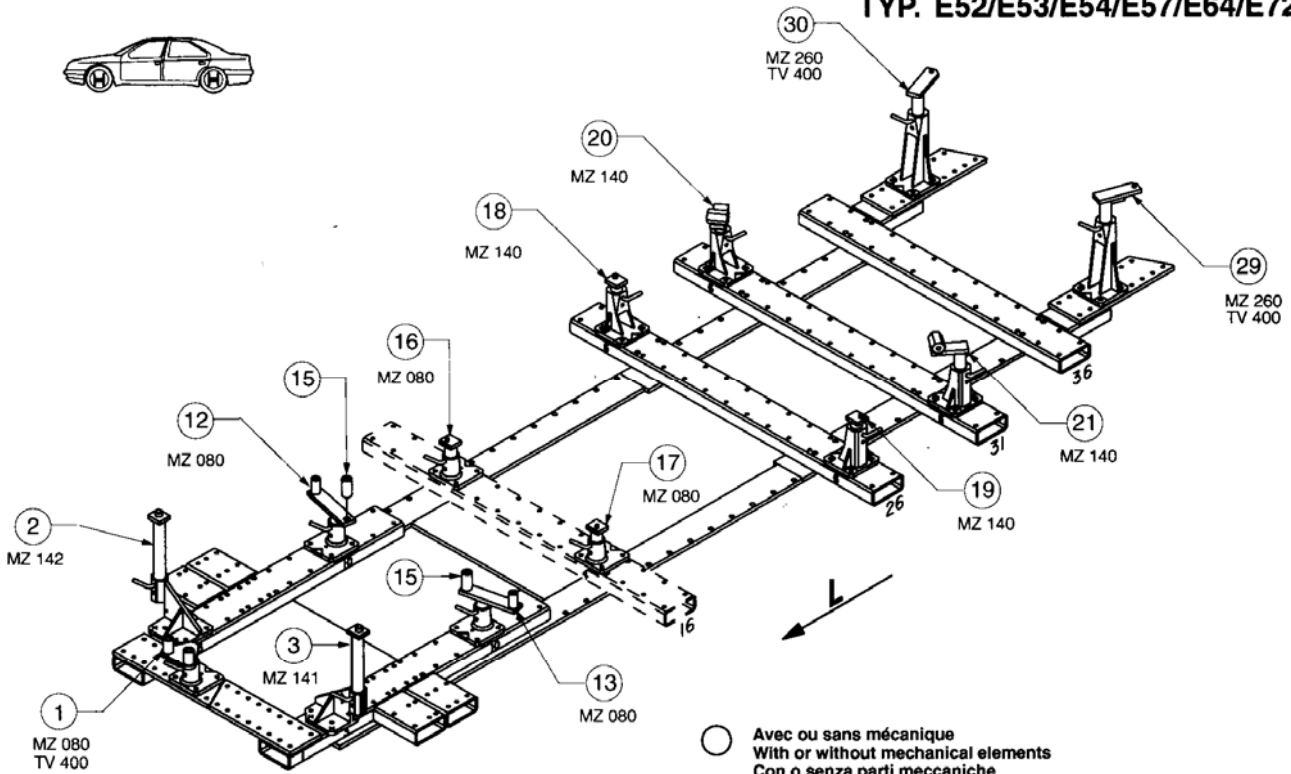
MITSUBISHI / DODGE / CHRYSLER **674.300**

73 Kg	07.06.95	421-D-18A
-------	----------	-----------





TYP. E52/E53/E54/E57/E64/E72/E77/E84



○ Avec ou sans mécanique  
With or without mechanical elements  
Con o senza parti meccaniche  
Mit oder ohne Aggregate  
Con ó sin mecánica desmontada

MITSUBISHI / DODGE / CHRYSLER

**674.300**

73 Kg | 07.06.95 | 421-D-18B

