

REP.	REFERENCE	PDS	NB	MZ
1	672.701	2,0	1	140
2	672.702	2,0	1	140
3	672.703	3,1	1	141
4	672.704	3,1	1	142
5	672.705	2,1	1	080/260
6	672.706	2,1	1	080/280
7	672.707	0,9	4	
8	672.708	3,0	1	601
9	672.709	3,0	1	602
10	672.710	0,4	2	
11	672.711	2,1	1	
12	672.712	2,1	1	
13	672.713	2,6	1	080/140
14	672.714	2,8	1	080/140
15	672.715	1,8	1	080
16	672.716	1,8	1	080
17	672.717	2,4	1	140/200
18	672.718	2,4	1	140/200
19	672.719	4,0	1	601
20	672.720	4,0	1	602
21	672.721	0,5	2	
22	672.722	2,9	1	200
23	672.723	2,9	1	200
24	672.724	2,8	1	260
25	672.725	2,6	1	280

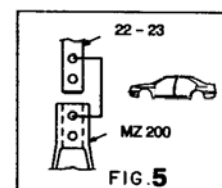
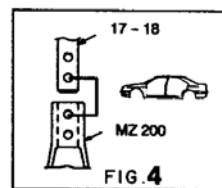
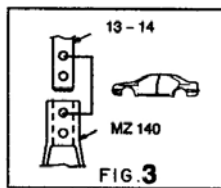
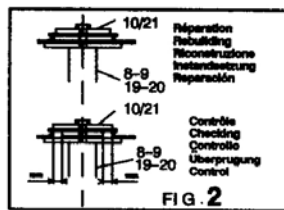
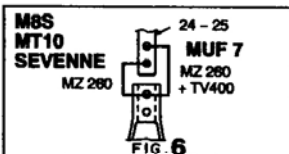
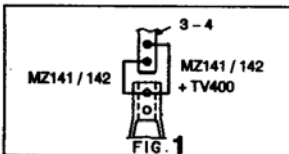
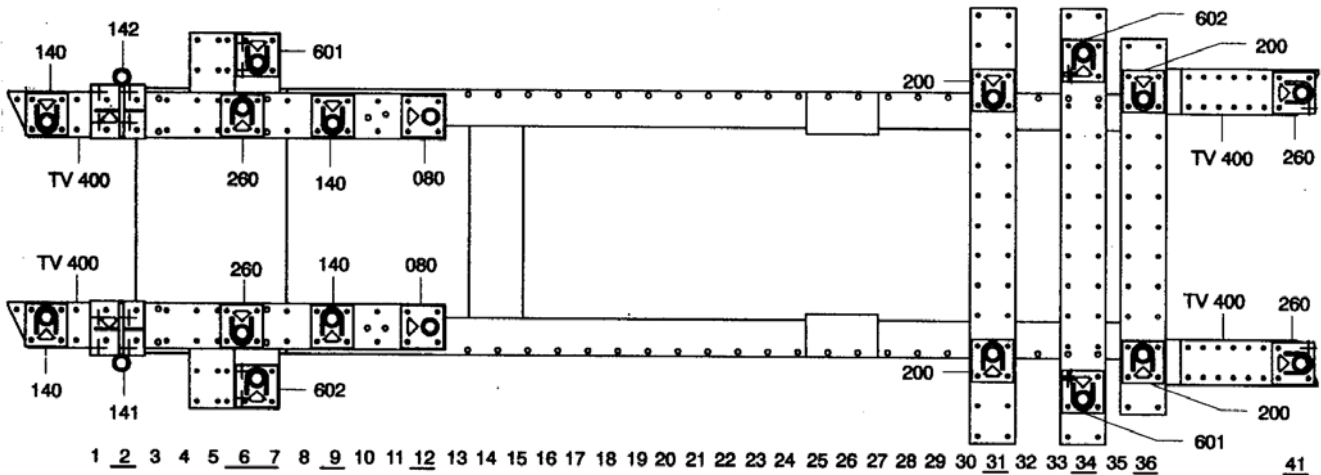
M 6x60	1
M 8x100	4
M 10.125x40	2
M 10.125x90	1
M 12x20	4
M 12x30	4
M 12.125x60	2
M 12.125x70	4
M 12.125x130	4
M 14.150x50	2
M 14.150x130	2

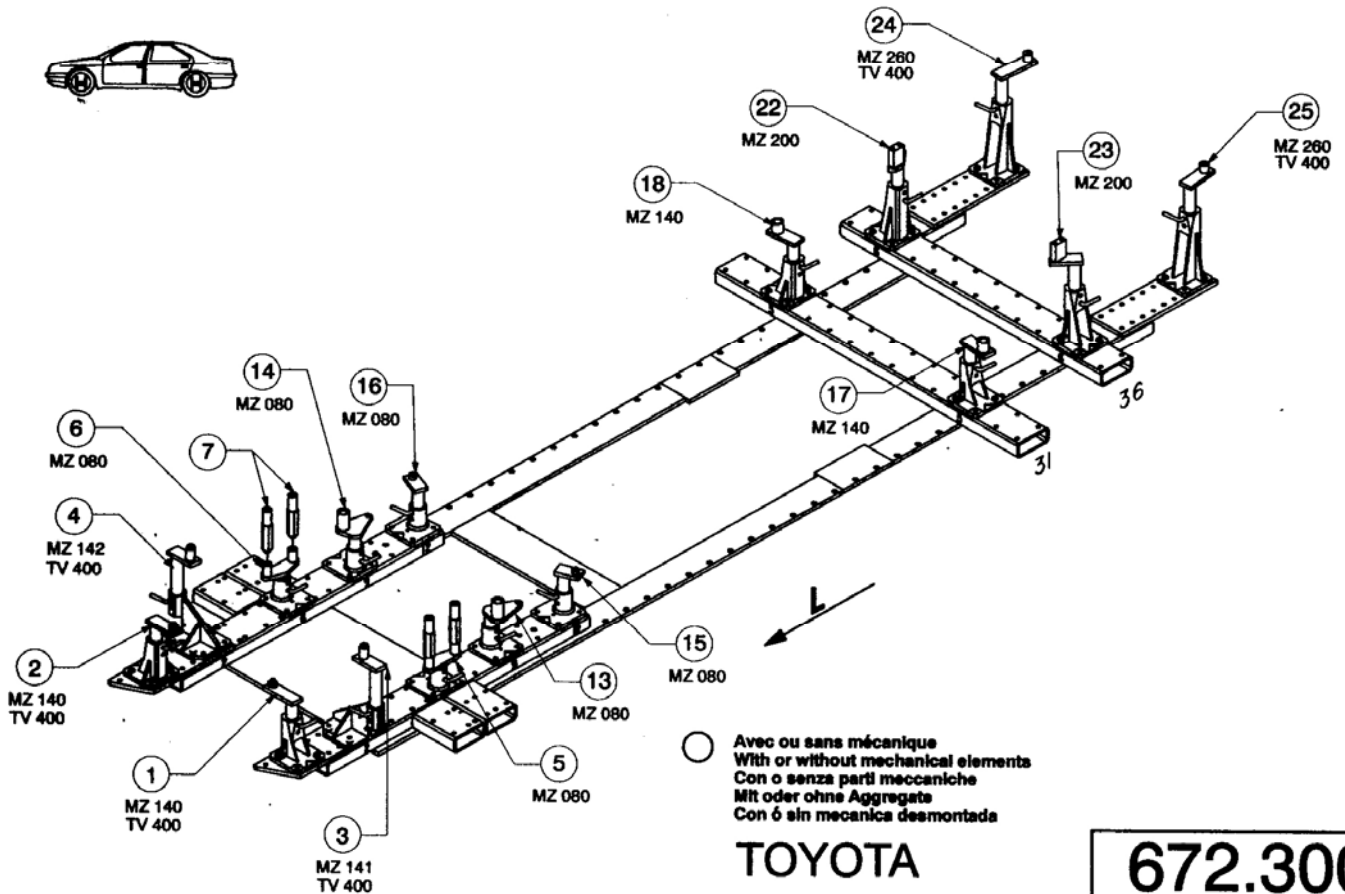
○ Avec ou sans mécanique  
With or without mechanical elements  
Con o senza parti meccaniche  
Mit oder ohne Aggregate  
Con ó sin mecánica desmontada

## TOYOTA

# 672.300

64 Kg    07.04.96    434-D-45A





TOYOTA

**672.300**

64 Kg    07.04.98    434-D-45B

