

REP.	MOD.
5 - 6	→ 12/94
37 - 38	01/95 →

○ Avec ou sans mécanique  
With or without mechanical elements  
Con o senza parti meccaniche  
Mit oder ohne Aggregate  
Con ó sin mecanica desmontada

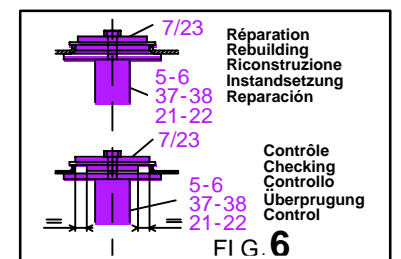
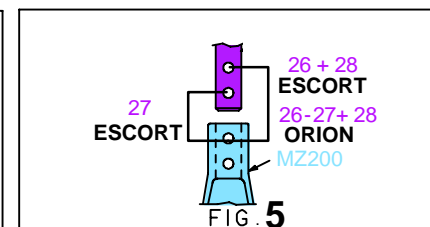
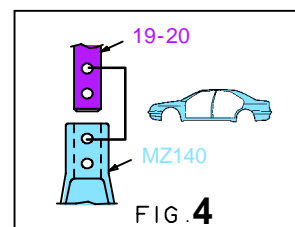
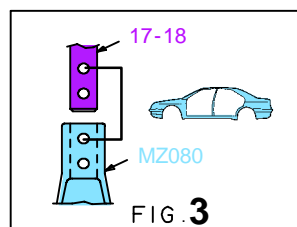
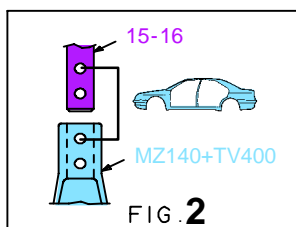
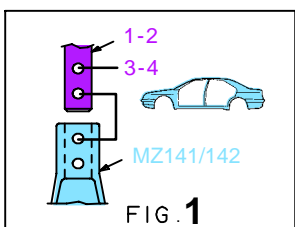
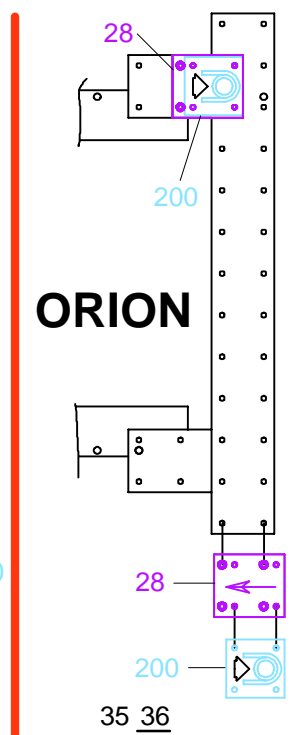
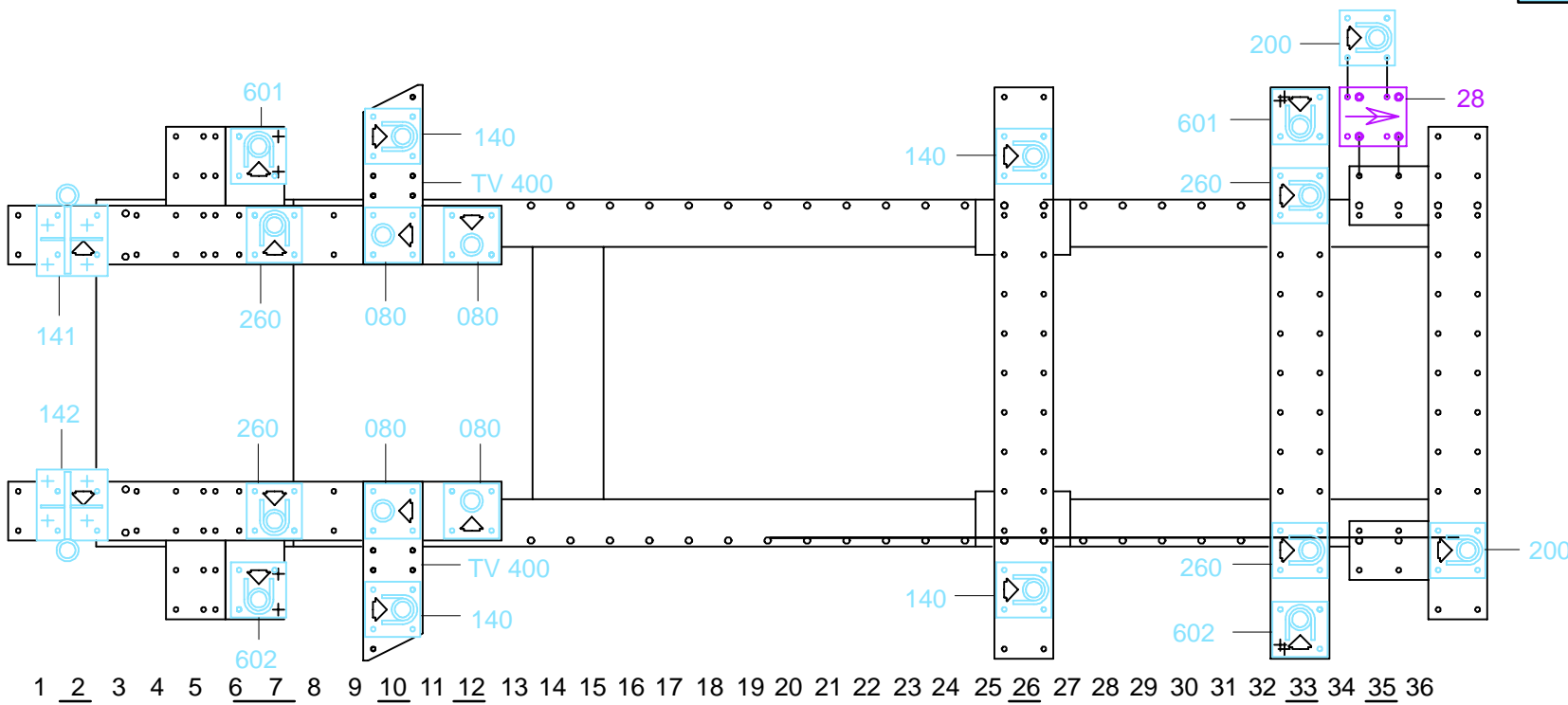
REP.	REFERENCE	PDS	NB	MZ
1	604.701	2,8	1	142
2	604.702	2,8	1	141
3	604.703	2,8	1	
4	604.704	2,8	1	
5	604.705	3,3	1	602
6	604.706	3,3	1	601
7	604.707	1,0	2	
8	604.708	2,4	1	260
9	604.709	2,4	1	260
10	604.710	1,7	1	080
11	604.711	1,7	1	080
12	604.712	1,4	2	
13	604.713	2,6	1	080
14	604.714	2,6	1	080
15	604.715	2,0	1	140
16	604.716	2,0	1	140
17	604.717	2,5	1	080
18	604.718	2,5	1	080
19	604.719	2,7	1	140
20	604.720	2,7	1	140
21	604.721	3,3	1	602
22	604.722	3,3	1	601
23	604.723	0,4	2	
24	604.724	1,9	1	260
25	604.725	1,9	1	260
26	604.726	2,8	1	200
27	604.727	2,5	1	200
28	604.728	3,0	2	
37	604.737	2,1	1	602
38	604.738 B.70	2,1	1	601
		0,1	2	

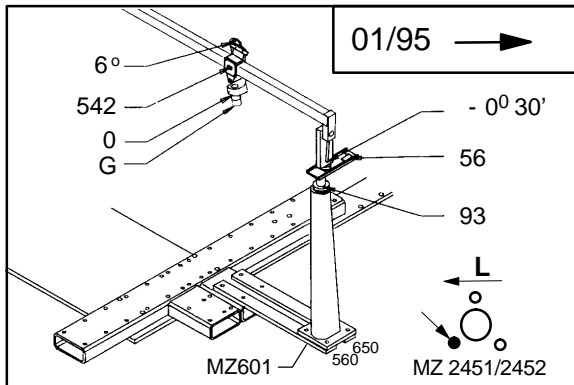
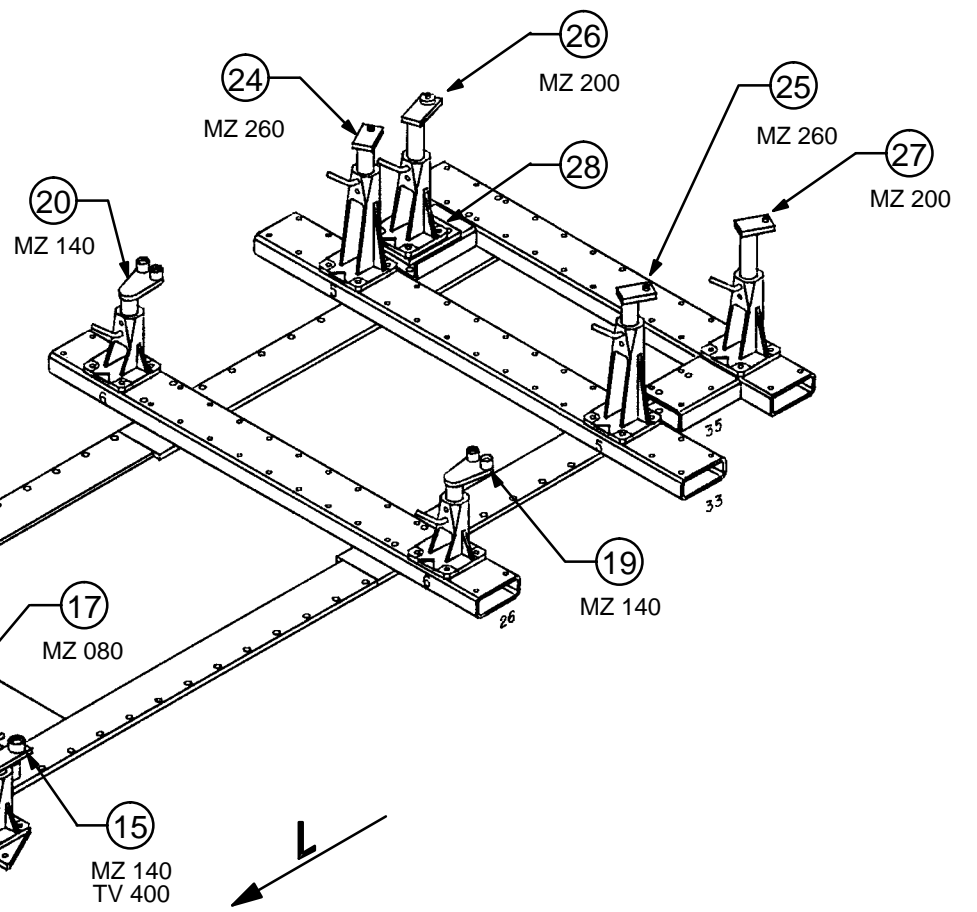
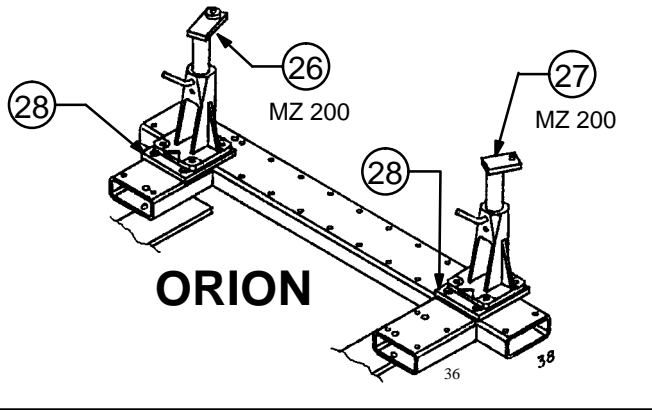
	M8x20	4
	M10x60	4
	M12x16	2
	M12x25	16
	M12x30	4
	M12x55	4
	CHc12x25	8
	M12	4
	LLU12	2

**FORD**

**604.310**

78 Kg    23.06.95    412-D-17H





○ Avec ou sans mécanique  
 With or without mechanical elements  
 Con o senza parti meccaniche  
 Mit oder ohne Aggregate  
 Con ó sin mecánica desmontada

**FORD**

**604.310**

78 Kg    23.06.95    412-D-17K

