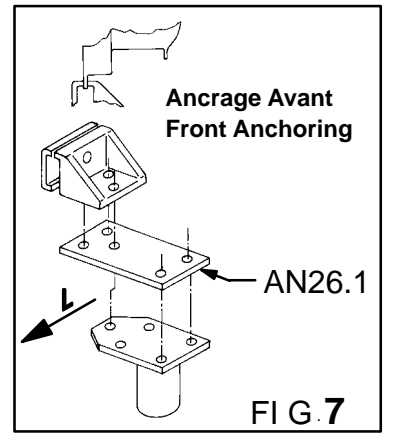
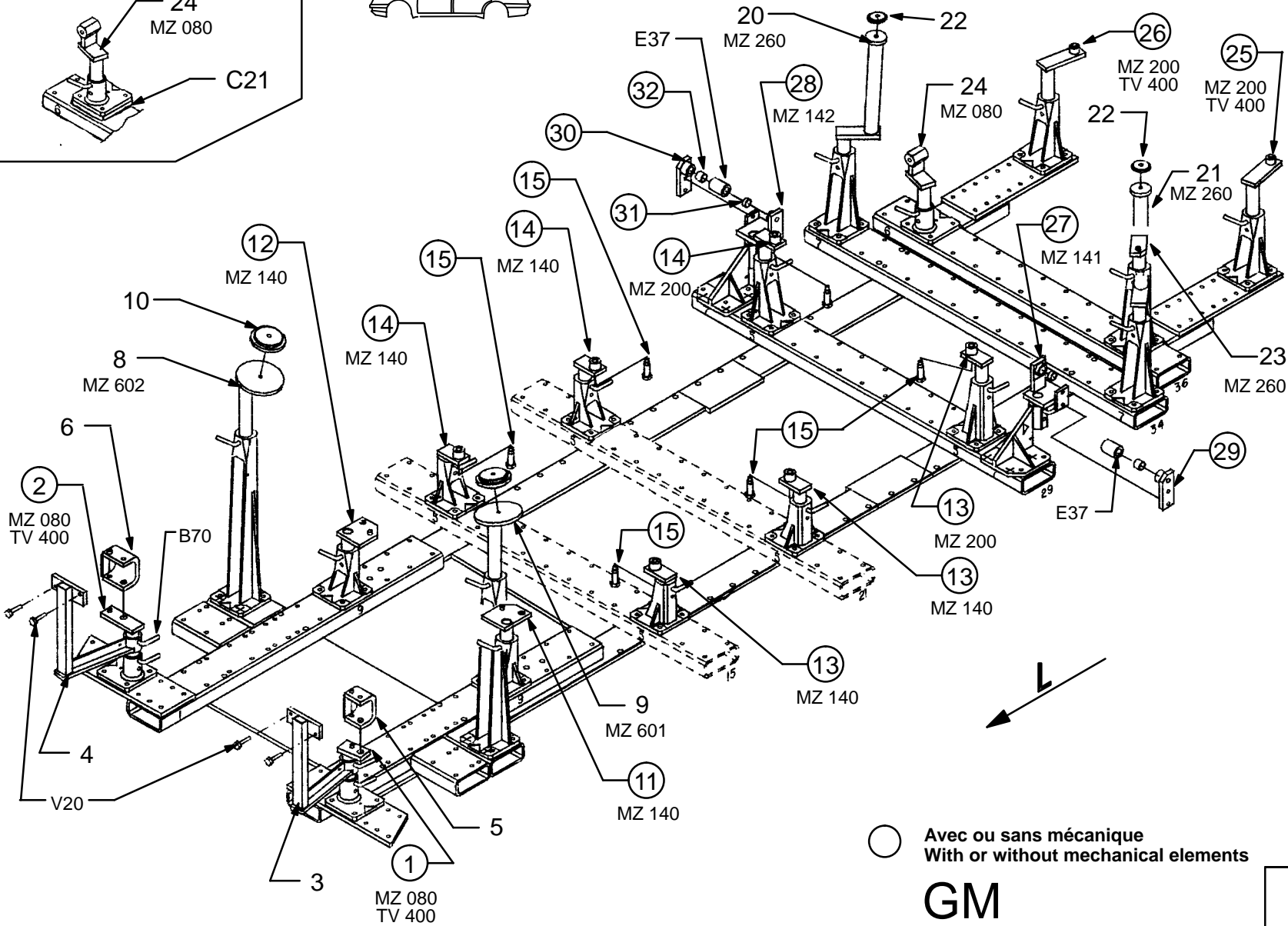
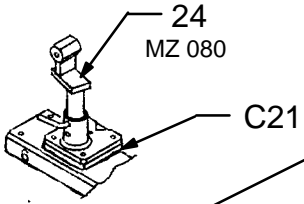


Mod. 91

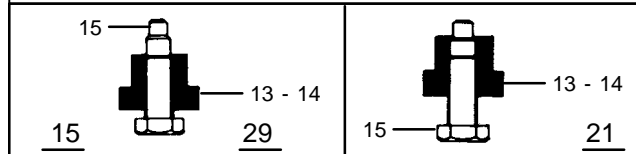
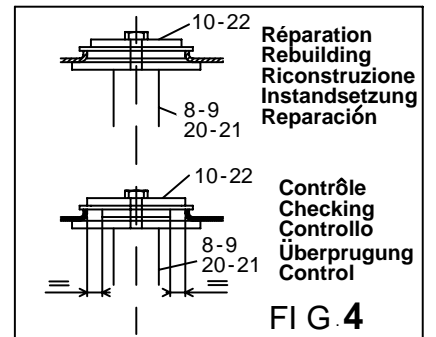
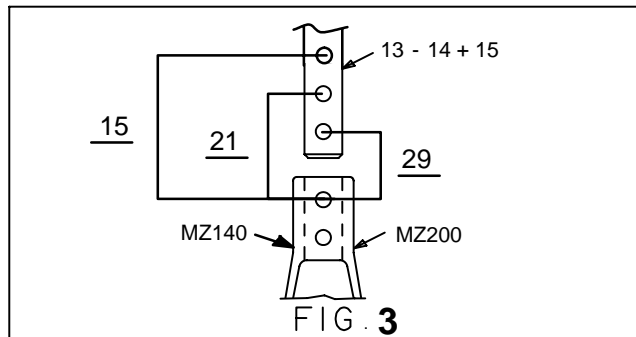
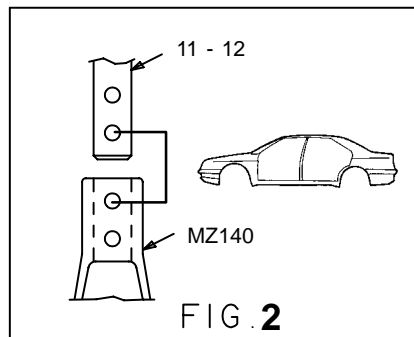
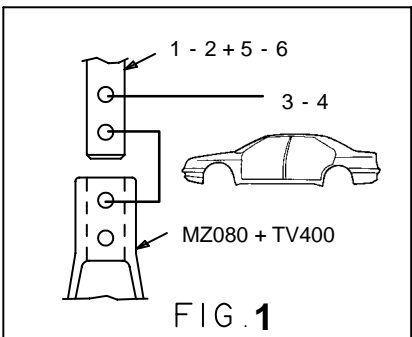
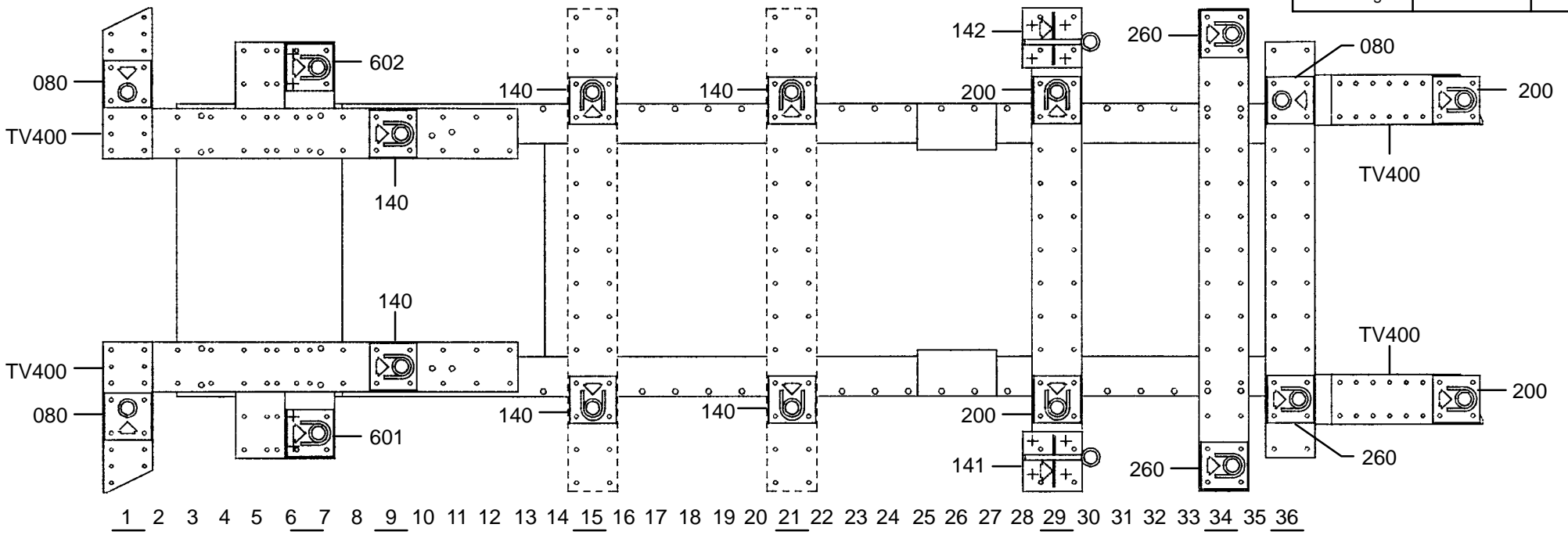


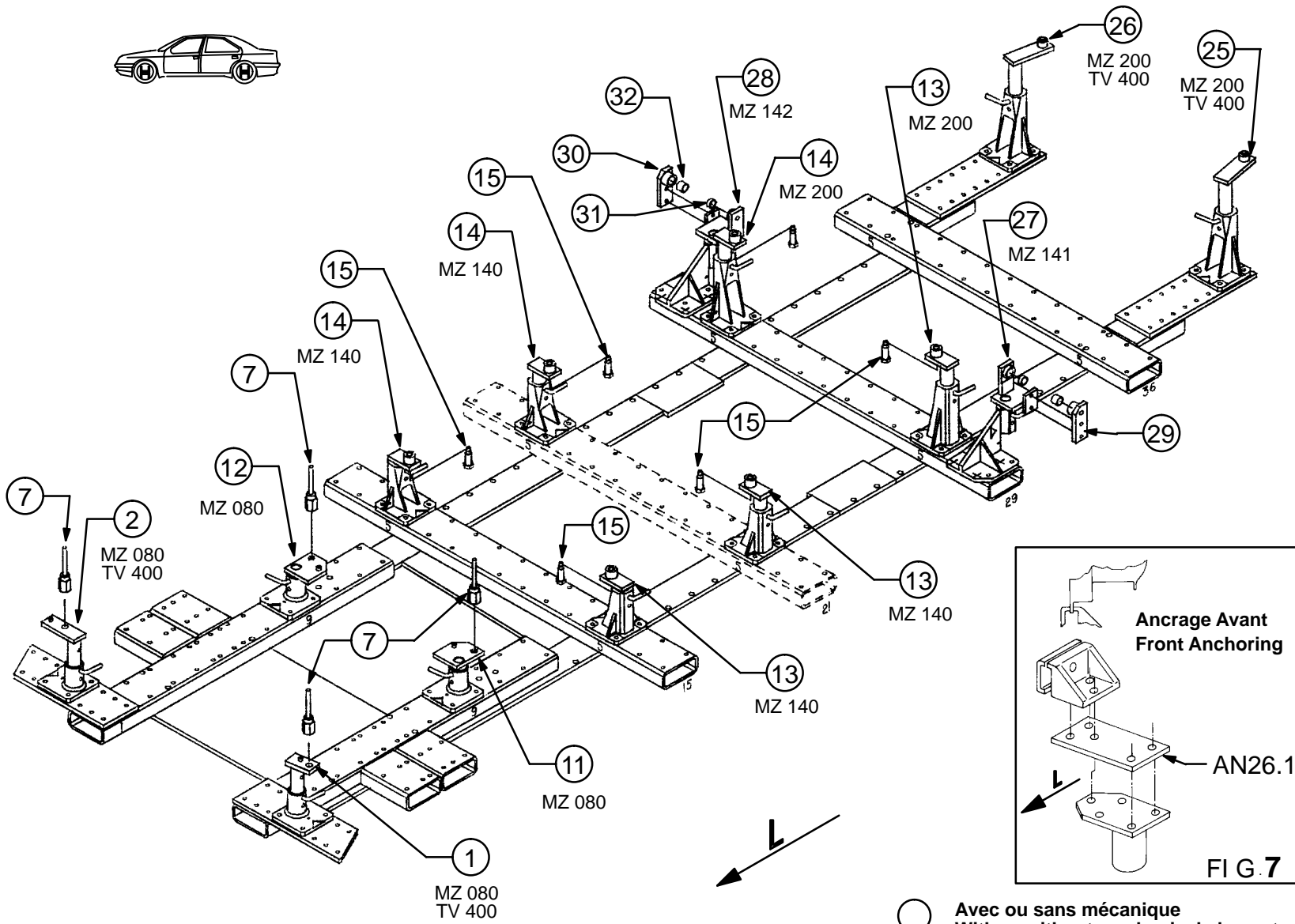
○ Avec ou sans mécanique
With or without mechanical elements

GM

579.320

74 Kg 26.12.91 440-D-14E





REP.	REFERENCE	PDS	NB	MZ
1	579.701	2,0	1	080
2	579.702	2,3	1	080
3	579.703	3,5	1	
4	579.704	3,5	1	
5	579.705	1,6	1	
6	579.706	2,0	1	
7	579.707	0,4	4	
8	579.708	4,1	1	602
9	579.709	4,1	1	601
10	579.710	1,7	2	
11	579.711	2,0	1	080/140
12	579.712	2,0	1	080/140
13	579.713	1,9	1	140/200
14	579.714	1,9	1	140/200
15	579.715	0,2	2	
20	579.720	3,4	1	260
21	579.721	3,3	1	260
22	579.722	0,2	2	
23	579.723	2,1	1	260
24	579.724	2,9	1	080
25	579.725	2,8	1	200
26	579.726	2,8	1	200
27	579.727	2,7	1	141
28	579.728	2,7	1	142
29	579.729	0,9	1	
30	579.730	0,9	1	
31	579.731	0,1	2	
32	579.732	0,1	2	
	AN26.1	4,5	2	
	E37	0,2	2	
	B70	0,2	2	
	V20	0,1	4	
	C21	1,8	1	
	M12x25		4	
	M12x35		8	
	M12x40		2	
	M12x50		2	
	M12x80		1	
	M16x50		4	
	M16x60		2	
	M16		6	
	L12		4	

GM

579.320

74 Kg 26.12.91 440-D-14F

