


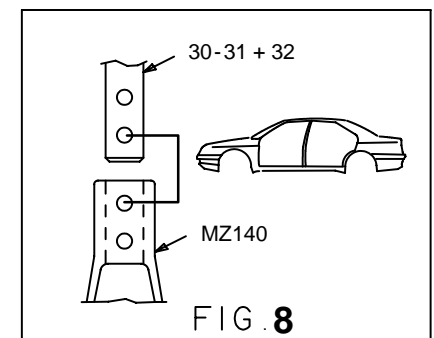
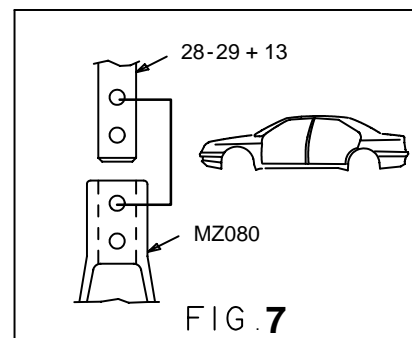
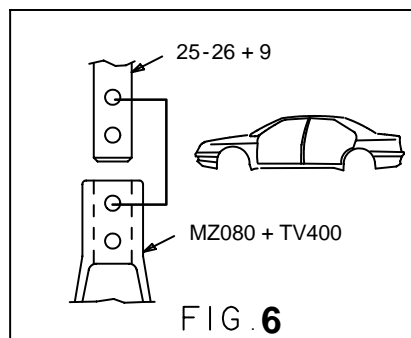
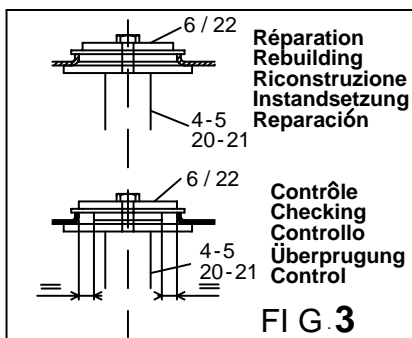
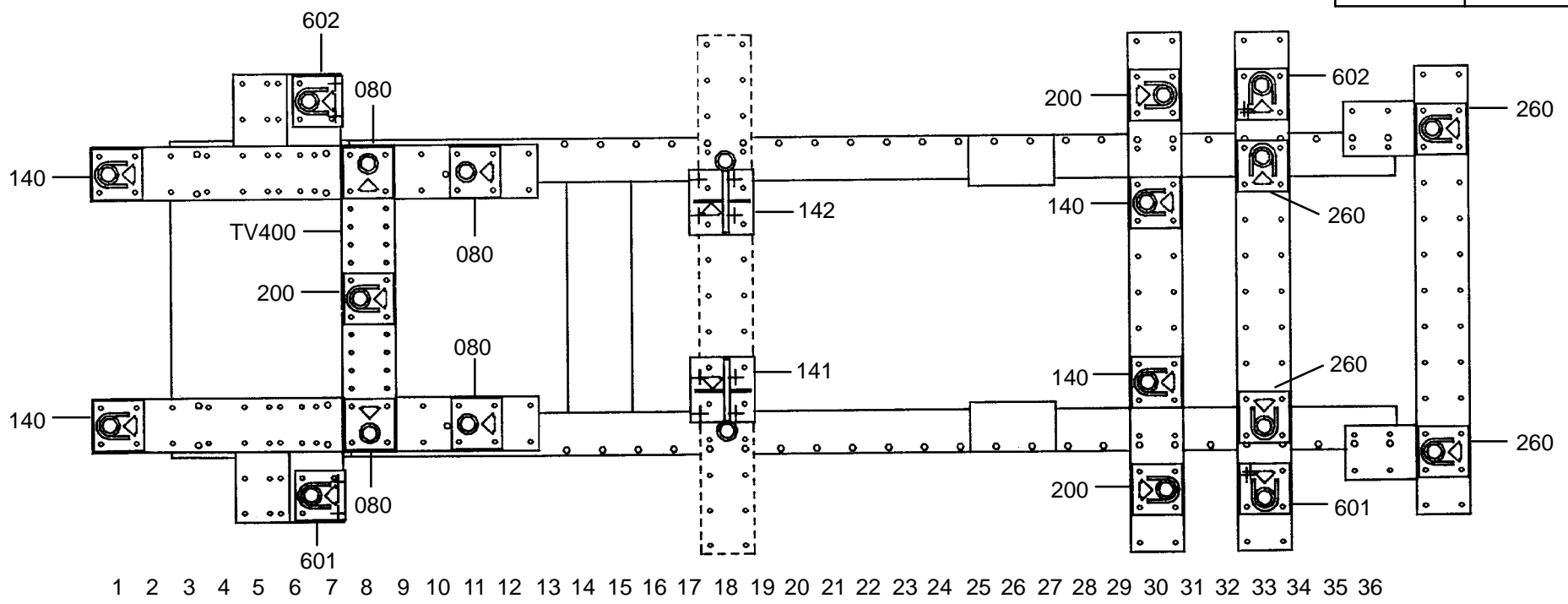
REP.	REFERENCE	PDS	NB	MZ
25	566.725	1,6	1	080
26	566.726	1,6	1	080
27	566.727	4,5	1	200
28	566.728	2,2	1	080
29	566.729	2,2	1	080
30	566.730	2,4	1	140
31	566.731	2,4	1	140
32	566.732	0,6	2	
33	566.733	1,9	1	200
34	566.734	1,9	1	200
35	566.735	2,2	1	260
36	566.736	2,2	1	260

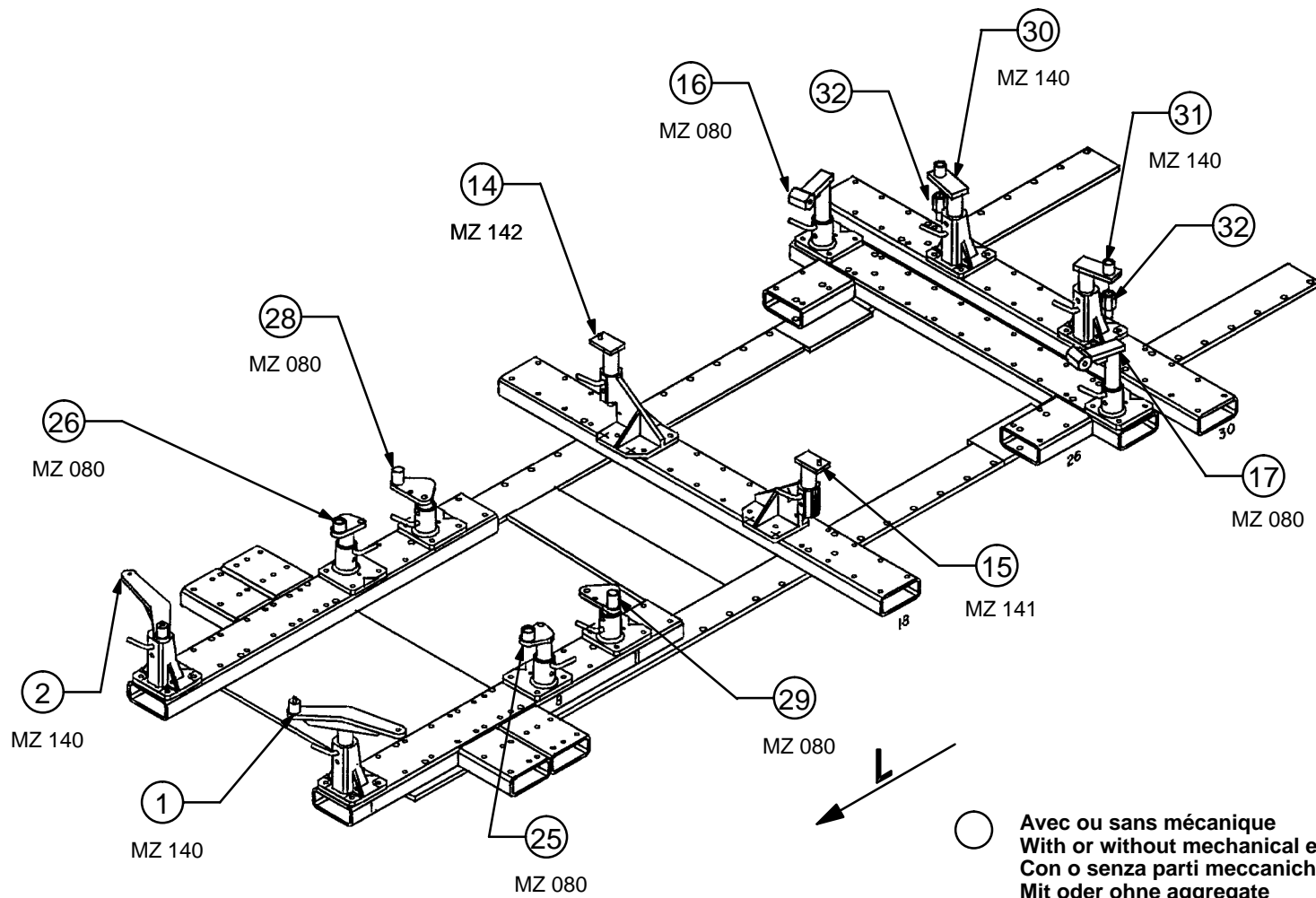
 M 12x90 2  
 complément au  
 complementary set to  
 complemento al  
 zusatz zu **566.300**

## 566.309

27kg 16-03-89 410-D-30C

### NISSAN





○ Avec ou sans mécanique  
 With or without mechanical elements  
 Con o senza parti meccaniche  
 Mit oder ohne aggregate  
 Con ó sin mecánica desmontada

REP.	REFERENCE	PDS	NB	MZ
25	566.725	1,6	1	080
26	566.726	1,6	1	080
27	566.727	4,5	1	200
28	566.728	2,2	1	080
29	566.729	2,2	1	080
30	566.730	2,4	1	140
31	566.731	2,4	1	140
32	566.732	0,6	2	
33	566.733	1,9	1	200
34	566.734	1,9	1	200
35	566.735	2,2	1	260
36	566.736	2,2	1	260

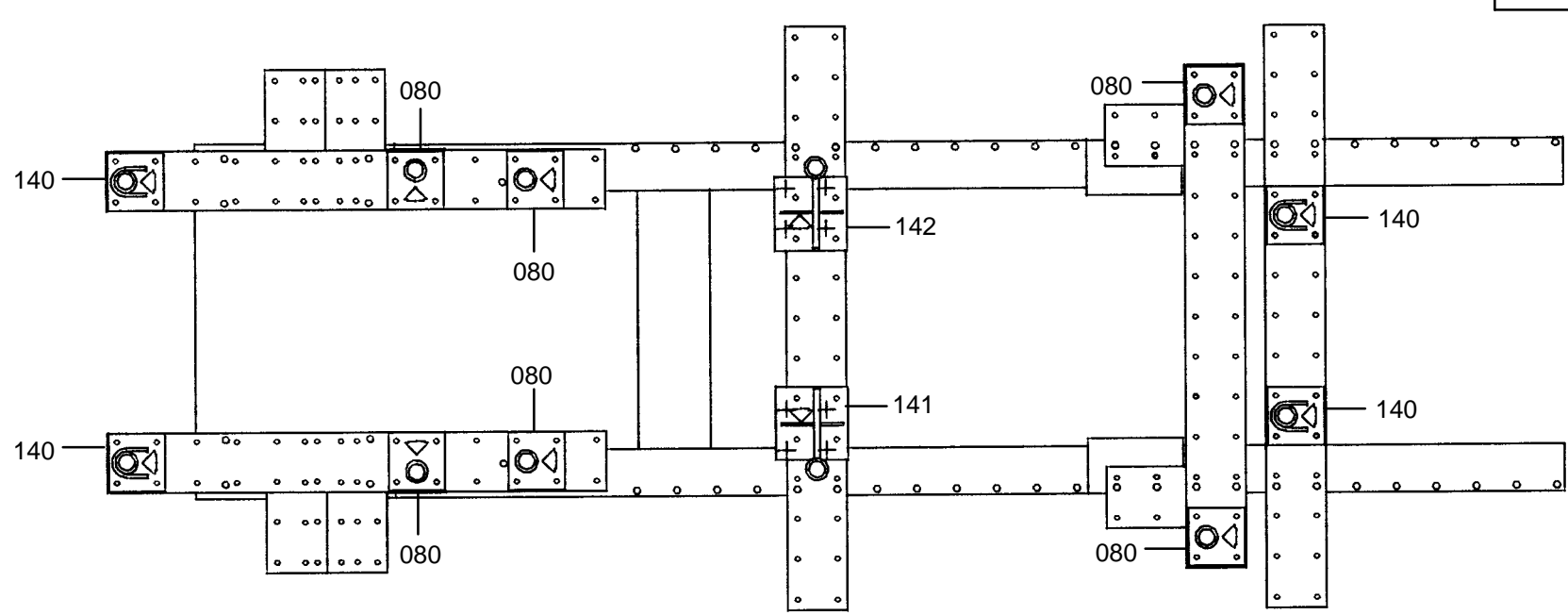
⊗ M 12x90 2

complément au  
 complementary set to  
 complemento al  
 zusatz zu **566.300**

**566.309**

27kg 16-03-89 410-D-30D

**NISSAN**



1 2 3 4 5 6 7 8 9 10 11 12 13 14 15 16 17 18 19 20 21 22 23 24 25 26 27 28 29 30 31 32 33 34 35 36

