


○ Avec ou sans mécanique
 With or without mechanical elements
 Con o senza parti meccaniche
 Mit oder ohne Aggregate
 Con ó sin mecanica desmontada

PORSCHE

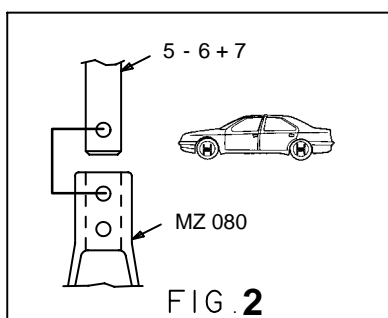
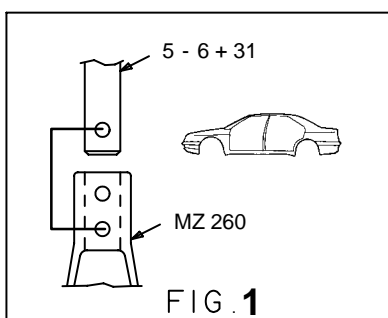
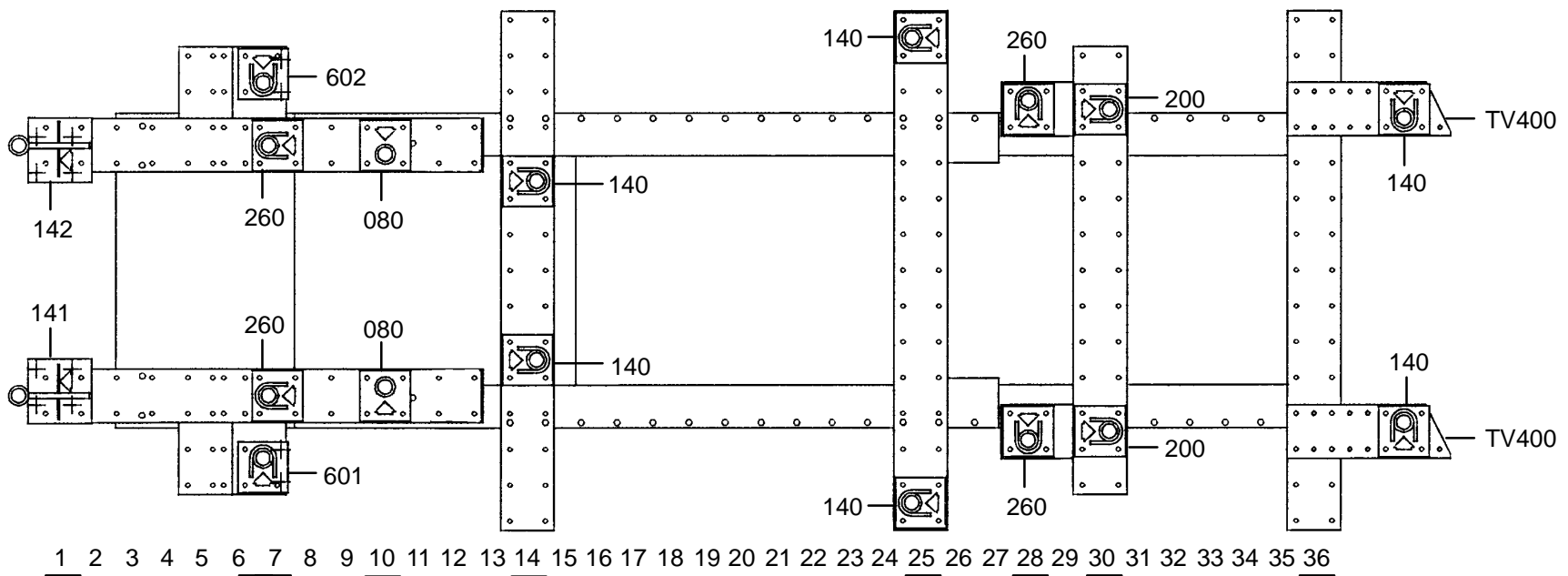
REP.	REFERENCE	PDS	NB	MZ
29	549.729	2,5	1	140
30	549.730	2,5	1	140
31	549.731	0,2	4	

 M 8 4

complément au
 complementary set to
 complemento al
 Zusatz zu **549.300**

549.309

6 Kg 06.11.90 425-D-2C



- MZ140 29 - 30 : Fixation de la traverse renfort**
- MZ260 5 - 6 - 31 : Fixation de la traverse de suspension avant pour 944 CABRIO**
- MZ140 29 - 30 : Fixing of the reinforcing crossmember**
- MZ260 5 - 6 - 31 : Fixing of the front suspension crossmember for 944 CABRIO**
- MZ140 29 - 30 : Befestigung der Verstärkungstraverse**
- MZ260 5 - 6 - 31 : Befestigung der vorderen Aufhängungstraverse für 944 CABRIO**
- MZ140 29 - 30 : Fissaggio della traversa di rinforzo**
- MZ260 5 - 6 - 31 : Fissaggio della traversa di sospensione anteriore per 944 CABRIO**
- MZ140 29 - 30 : Sujeción de la traviesa de reguerzo**
- MZ260 5 - 6 - 31 : Sujeción de la traviesa de la suspensión delantera para 944 CABRIO**