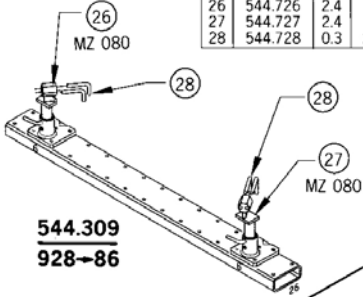
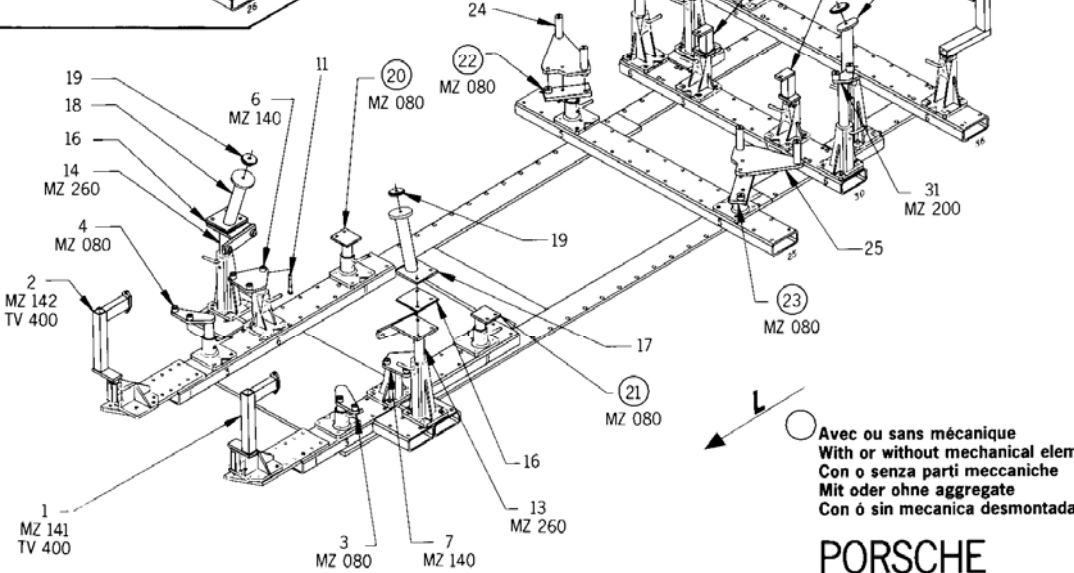


REP.	REFERENCE	PDS	NB	MZ
26	544.726	2.4	1	080
27	544.727	2.4	1	080
28	544.728	0.3	2	



544.309
928-86



Avec ou sans mécanique
With or without mechanical elements
Con o senza parti meccaniche
Mit oder ohne aggregate
Con ó sin mecanica desmontada

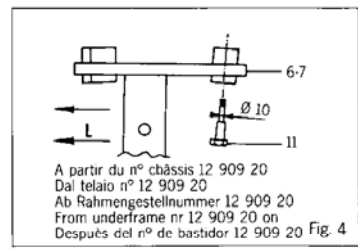
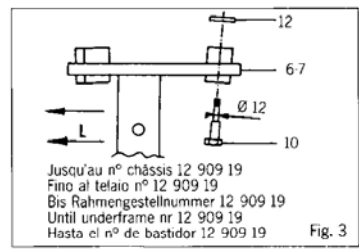
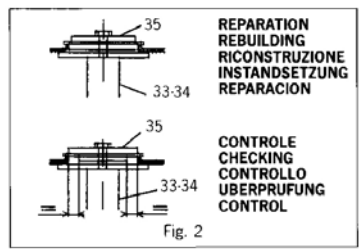
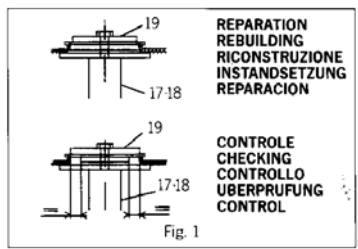
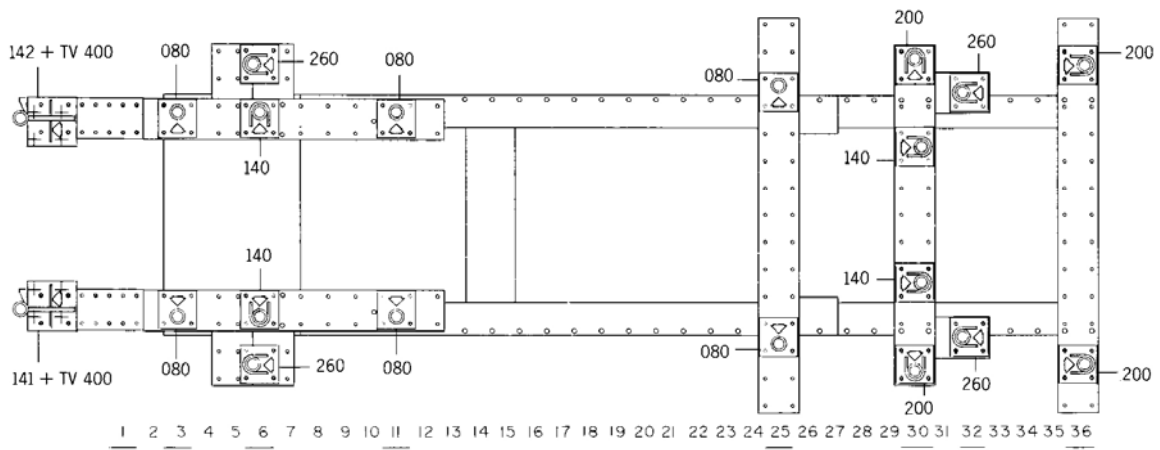
PORSCHE

REP.	REFERENCE	PDS	NB	MZ
1	544.701	2.8	1	141
2	544.702	2.8	1	142
3	544.703	2.4	1	080
4	544.704	2.4	1	080
6	544.706	2.5	1	140
7	544.707	2.5	1	140
8	544.708	2.0	1	080
9	544.709	2.0	1	080
10	544.710	0.1	2	
11	544.711	0.1	2	
12	544.712	0.1	2	
13	544.713	4.8	1	260
14	544.714	4.8	1	260
16	544.716	0.9	2	
17	544.717	2.5	1	
18	544.718	2.5	1	
19	544.719	0.5	2	
20	544.720	1.7	1	080
21	544.721	1.7	1	080
22	544.722	2.5	1	080
23	544.723	2.5	1	080
24	544.724	5.5	1	
25	544.725	5.5	1	
29	544.729	1.9	1	140
30	544.730	1.9	1	140
31	544.731	3.8	1	200
32	544.732	3.8	1	200
33	544.733	2.5	1	260
34	544.734	2.5	1	260
35	544.735	0.4	2	
36	544.736	2.6	1	200
37	544.737	2.6	1	200
38	544.738	1.5	1	080
39	544.739	1.5	1	080

M 12.150 x 45	4
M 12.150 x 150	2
M 12.150 x 60	4
M 12.150 x 40	2
M 8 x 20	8
CHC 10 x 70	2
M 10 x 70	2
M 10 x 130	2
M 10 x 150	2
M 10 x 60	2
M 10 x 70	2
M 12 x 30	2
M 12 x 35	6
M 12 x 25	2
M 12 x 45	2
M 14 x 60	4

544.300

84 kg	19.07.88	425 - D - 1A
-------	----------	--------------





CELETTE

PORSCHE 928

86 →

REP.	RÉFÉRENCE	PDS	NB	MZ
1	544.701	2.8	1	141
2	544.702	2.8	1	142
3	544.703	2.4	1	080
4	544.704	2.4	1	080
6	544.706	2.5	1	140
7	544.707	2.5	1	140
8	544.708	2.0	1	080
9	544.709	2.0	1	080
10	544.710	0.1	2	
11	544.711	0.1	2	
12	544.712	0.1	2	
13	544.713	4.8	1	260
14	544.714	4.8	1	260
16	544.716	0.9	2	
17	544.717	2.5	1	
18	544.718	2.5	1	
19	544.719	0.5	2	
20	544.720	1.7	1	080
21	544.721	1.7	1	080
22	544.722	2.5	1	080
23	544.723	2.5	1	080
24	544.724	5.5	1	
25	544.725	5.5	1	
29	544.729	1.9	1	140
30	544.730	1.9	1	140
31	544.731	3.8	1	200
32	544.732	3.8	1	200
33	544.733	2.5	1	260
34	544.734	2.5	1	260
35	544.735	0.4	2	
36	544.736	2.6	1	200
37	544.737	2.6	1	200
38	544.738	1.5	1	080
39	544.739	1.5	1	080

	M 12.150 x 45	4
	M 12.150 x 150	2
	M 12.150 x 60	4
	M 12.150 x 40	2
	M 8 x 20	8
	CHC 10 x 70	2
	M 10 x 70	2
	M 10 x 130	2
	M 10 x 150	2
	M 10 x 60	2
	M 10 x 70	2
	M 12 x 30	2
	M 12 x 35	6
	M 12 x 25	2
	M 12 x 45	2
	M 14 x 60	4

○ Avec ou sans mécanique
 With or without mechanical elements
 Con o senza parti meccaniche
 Mit oder ohne aggregate
 Con ó sin mecanica desmontada

PORSCHE

544.300

84 kg	19.07.88	425 - D - 1B
-------	----------	--------------

