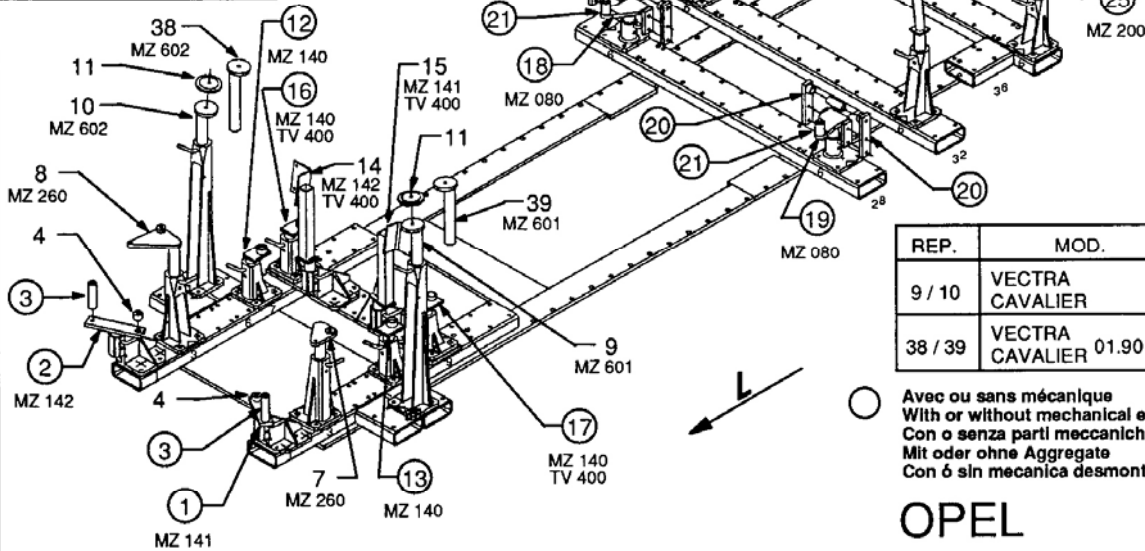


REP.	REFERENCE	PDS	NB	MZ
1	543.701	1,6	1	141
2	543.702	2,4	1	142
3	543.703	0,5	2	
4	543.704	0,2	2	
5	543.705	0,1	2	
6	543.706	0,1	2	
7	543.707	3,0	1	260
8	543.708	3,8	1	260
9	543.709	3,0	1	601
10	543.710	3,0	1	602
11	543.711	0,5	2	
12	543.712	1,3	1	140/080
13	543.713	1,3	1	140/080
14	543.714	3,5	1	142
15	543.715	4,2	1	141
16	543.716	1,2	1	140/080
17	543.717	1,2	1	140/080
18	543.718	5,2	1	080
19	543.719	5,2	1	080
20	543.720	1,0	4	
21	543.721	0,4	2	
22	543.722	2,7	1	260
23	543.723	2,7	1	260
24	543.724	0,1	2	
25	543.725	2,3	1	200
26	543.726	2,3	1	200
27	543.727	3,6	1	141
28	543.728	4,2	1	142
38	543.738	3,0	1	602
39	543.739	3,0	1	601
E 28		0,1	2	



REP.	MOD.
9 / 10	VECTRA CAVALIER
38 / 39	VECTRA CAVALIER 01.90 →

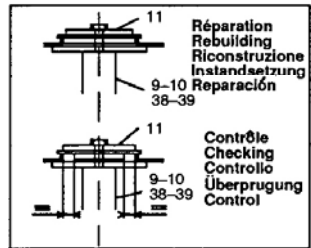
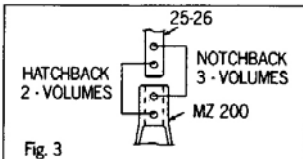
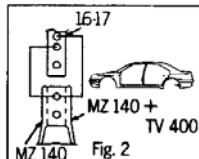
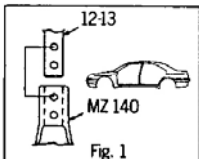
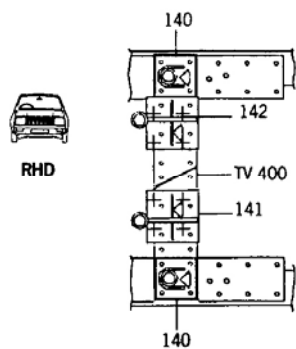
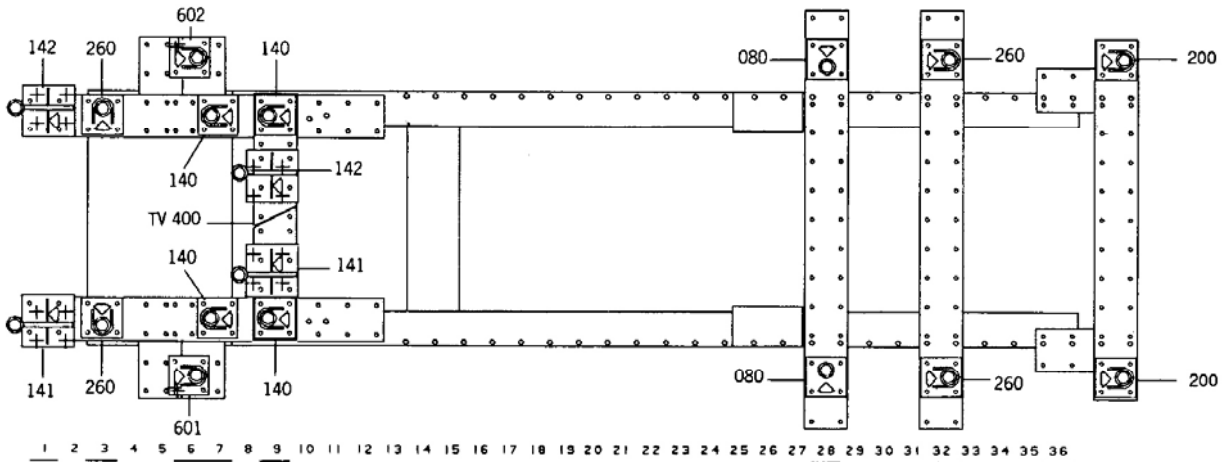
○ Avec ou sans mécanique
With or without mechanical elements
Con o senza parti meccaniche
Mit oder ohne Aggregate
Con ó sin mecanica desmontada

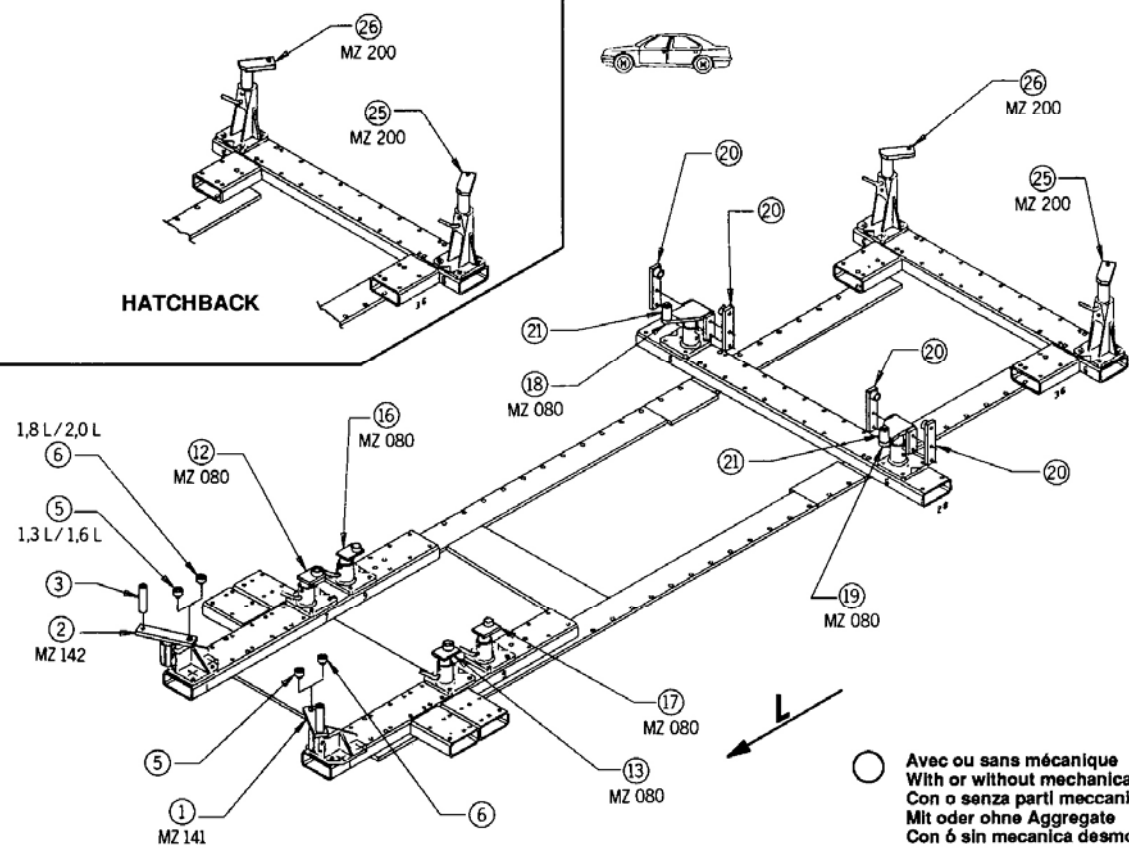
OPEL

M 8x20	2
M 10.125x30	2
M 10.125x40	2
M 12.150x50	2
M 12.150x110	2
M 12x25	8
M 12x30	8
M 12x50	2
M 14.150x110	2
M 14.150x50	2

■ **543.410**
* **543.310**

65 Kg 08.11.89 422-D-11E





REP.	REFERENCE	PDS	NB	MZ
1	543.701	1,6	1	141
2	543.702	2,4	1	142
3	543.703	0,5	2	
4	543.704	0,2	2	
5	543.705	0,1	1	
6	543.706	0,1	2	
7	543.707	3,0	1	260
8	543.708	3,8	1	260
9	543.709	3,0	1	601
10	543.710	3,0	1	602
11	543.711	0,5	2	
12	543.712	1,3	1	140/080
13	543.713	1,3	1	140/080
14	543.714	3,5	1	142
* 15	543.715	4,2	1	141
16	543.716	1,2	1	140/080
17	543.717	1,2	1	140/080
18	543.718	5,2	1	080
19	543.719	5,2	1	080
20	543.720	1,0	4	
21	543.721	0,4	2	
22	543.722	2,7	1	260
23	543.723	2,7	1	260
24	543.724	0,1	1	
25	543.725	2,3	2	200
26	543.726	2,3	1	200
27	543.727	3,5	1	141
28	543.728	4,2	1	142
38	543.738	3,0	1	602
39	543.739	3,0	1	601
E 28		0,1	2	

M 8x20 M 10.125x30 M 10.125x40 M 12.150x50 M 12.150x110	2 2 2 2 2
M 12x25 M 12x30 M 12x50 M 14.150x110 M 14.150x50	2 2 2 2 2

MU 12	4
-------	---

○ Avec ou sans mécanique
With or without mechanical elements
Con o senza parti meccaniche
Mit oder ohne Aggregate
Con ó sin mecanica desmontada

543.410
*** 543.310**

65 Kg	08.11.89	422-D-11F
-------	----------	-----------

