

REP.	REFERENCE	PDS.	NB	MZ
1	527.701	1.7	1	140
2	527.702	1.7	1	140
3	527.703	0.4	2	
4	527.704	4.2	1	260
5	527.705	4.2	1	260
6	527.706	2.7	1	
7	527.707	4.5	1	140
8	527.708	2.1	1	080
9	527.709	2.1	1	080
10	527.710	2.7	1	602
11	527.711	2.7	1	601
12	527.712	1.0	2	
13	527.713	1.2	2	
14	527.714	2.5	1	080
15	527.715	2.5	1	080
16	527.716	2.1	1	200
17	527.717	2.1	1	200
18	527.718	2.6	1	602
19	527.719	2.6	1	601
20	527.720	1.0	2	
21	527.721	0.5	2	
22	527.722	2.1	1	260
23	527.723	2.1	1	260
24	527.724	0.1	4	
25	527.725	2.0	1	142
26	527.726	2.0	1	141

M 10x100	4
CHC 12x25 TB	2
M 12x25	2
M 12x30	4
M 12x50	2
M 10	6
M 10x25	4

○ Avec ou sans mécanique
 With or without mechanical elements
 Con o senza parti meccaniche
 Mit oder ohne aggregate
 Con ó sin mecanica desmontada

LANCIA

527.300

60 kg	07.16.87	417 - D - 4A
-------	----------	--------------

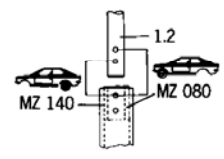
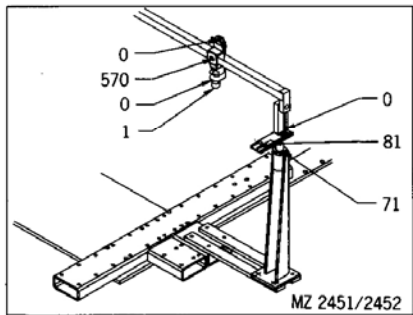
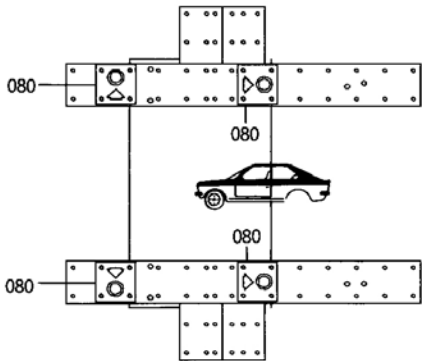
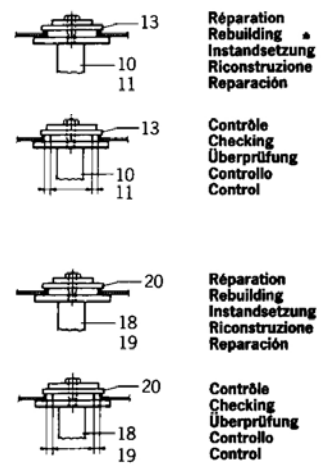
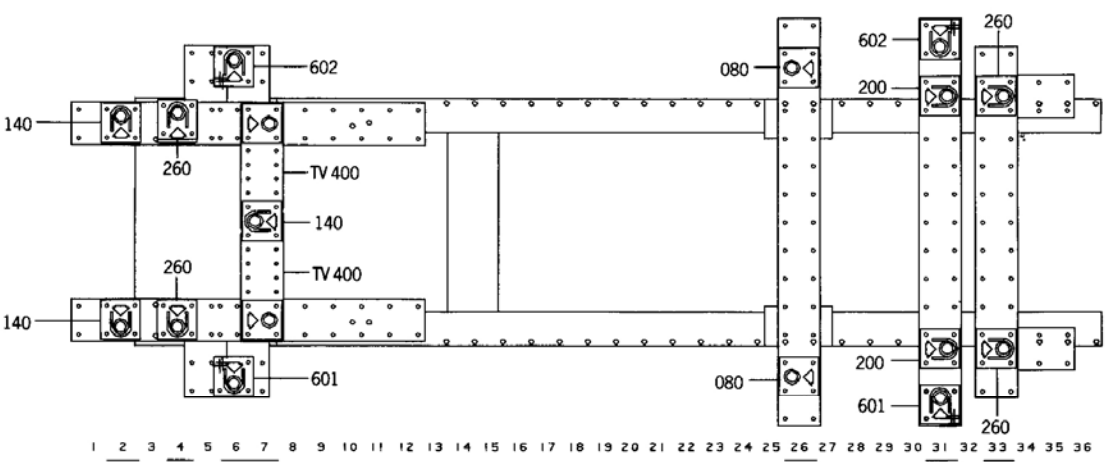


Fig. 1

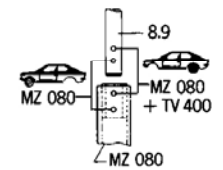


Fig. 2

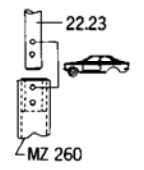
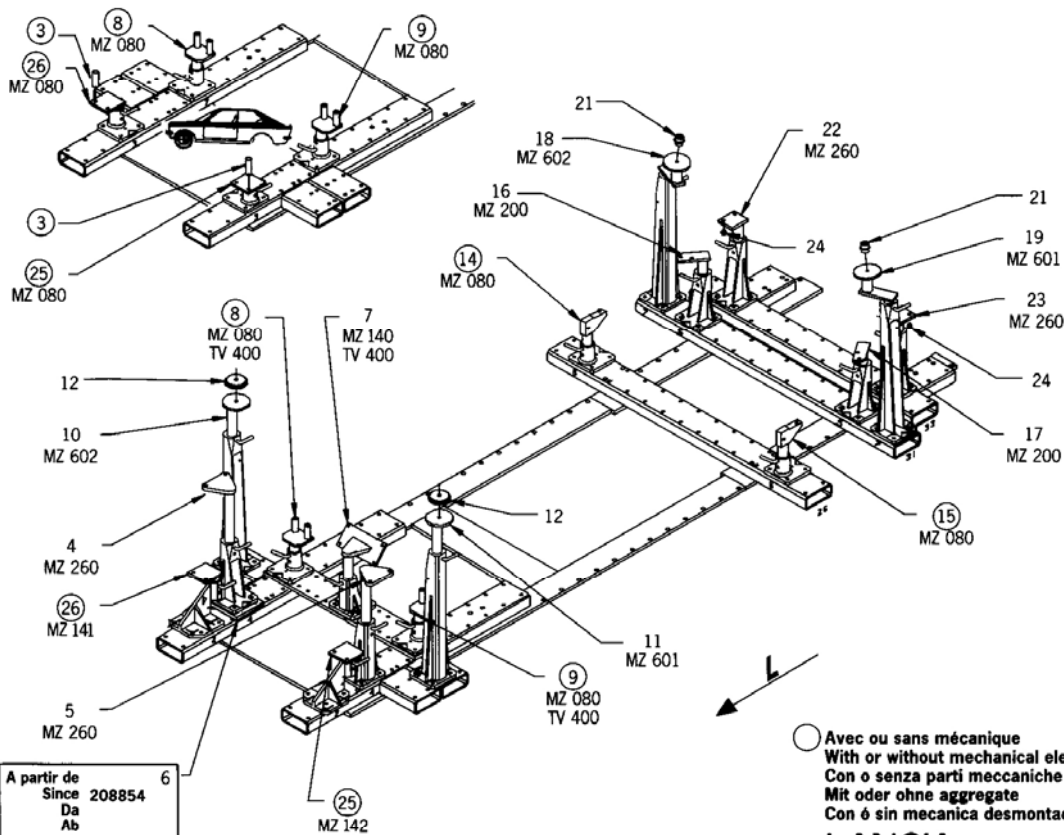


Fig. 3



REP.	REFERENCE	PDS.	NB	MZ
1	527.701	1.7	1	140
2	527.702	1.7	1	140
3	527.703	0.4	2	
4	527.704	4.2	1	260
5	527.705	4.2	1	260
6	527.706	2.7	1	
7	527.707	4.5	1	140
8	527.708	2.1	1	080
9	527.709	2.1	1	080
10	527.710	2.7	1	602
11	527.711	2.7	1	601
12	527.712	1.0	2	
13	527.713	1.2	2	
14	527.714	2.5	1	080
15	527.715	2.5	1	080
16	527.716	2.1	1	200
17	527.717	2.1	1	200
18	527.718	2.6	1	602
19	527.719	2.6	1	601
20	527.720	1.0	2	
21	527.721	0.5	2	
22	527.722	2.1	1	260
23	527.723	2.1	1	260
24	527.724	0.1	4	
25	527.725	2.0	1	142
26	527.726	2.0	1	141

M 10x100	4
CHC 12x25 TB	2
M 12x25	2
M 12x30	4
M 12x50	2
M 10	6
M 10x25	4

LANCIA

527.300

60 kg 07.16.87 417 - D - 4B

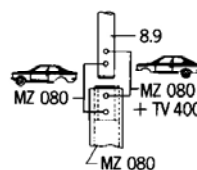
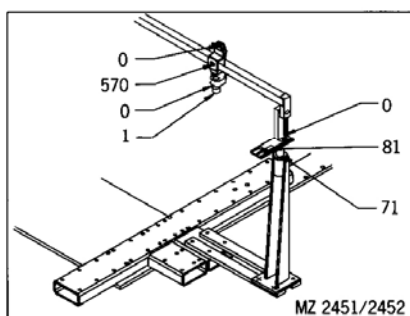
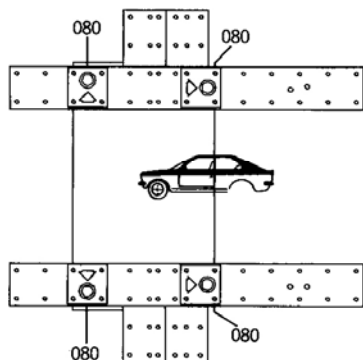
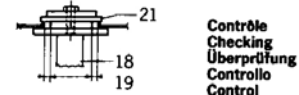
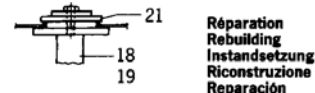
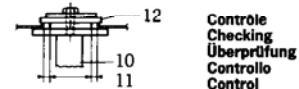
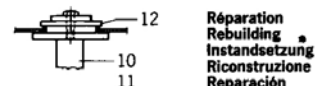
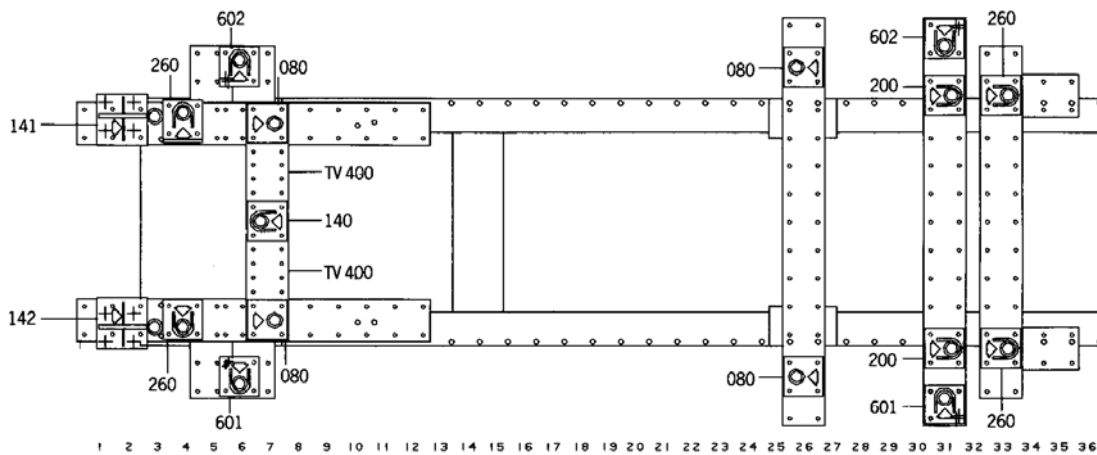


Fig. 2

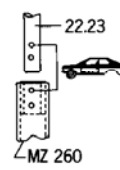


Fig. 3

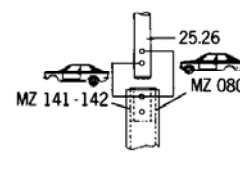


Fig. 4