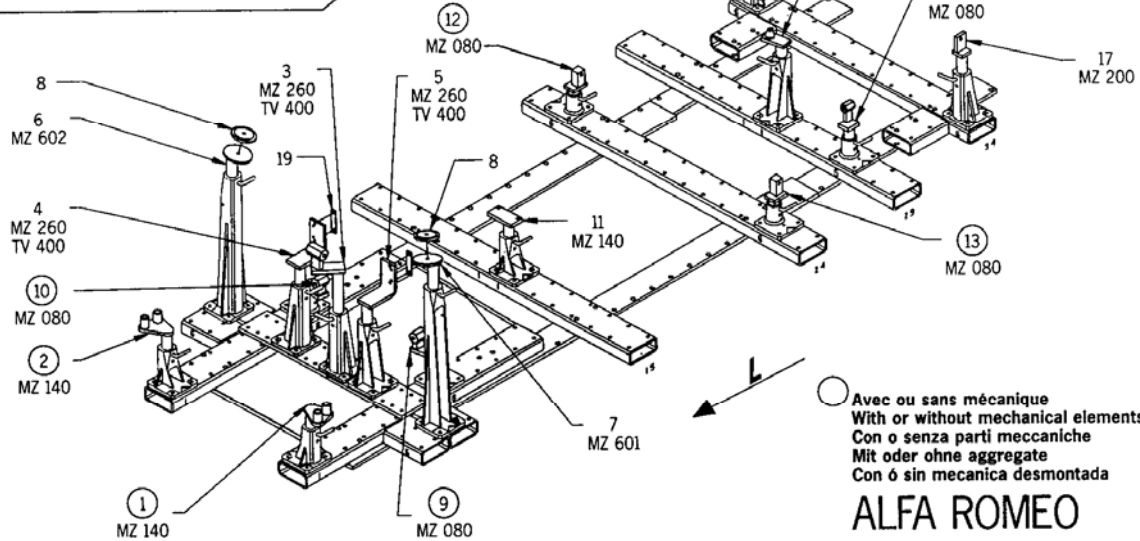
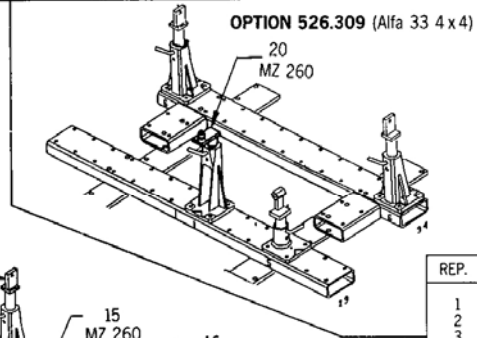
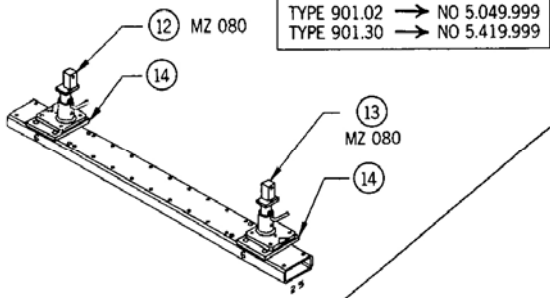


ALFA ROMEO ALFASUD - ALFA 33



○ Avec ou sans mécanique
 With or without mechanical elements
 Con o senza parti meccaniche
 Mit oder ohne aggregate
 Con ó sin mecanica desmontada

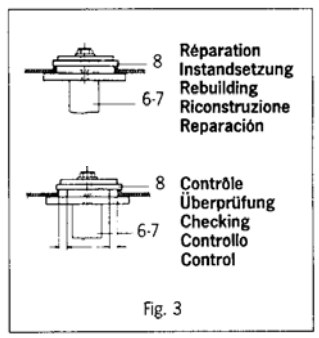
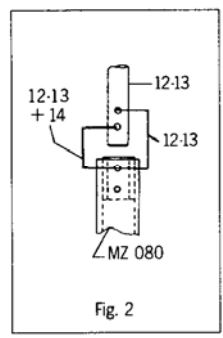
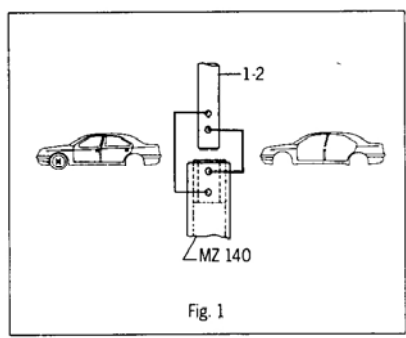
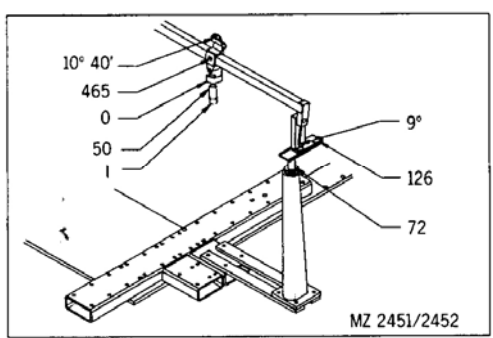
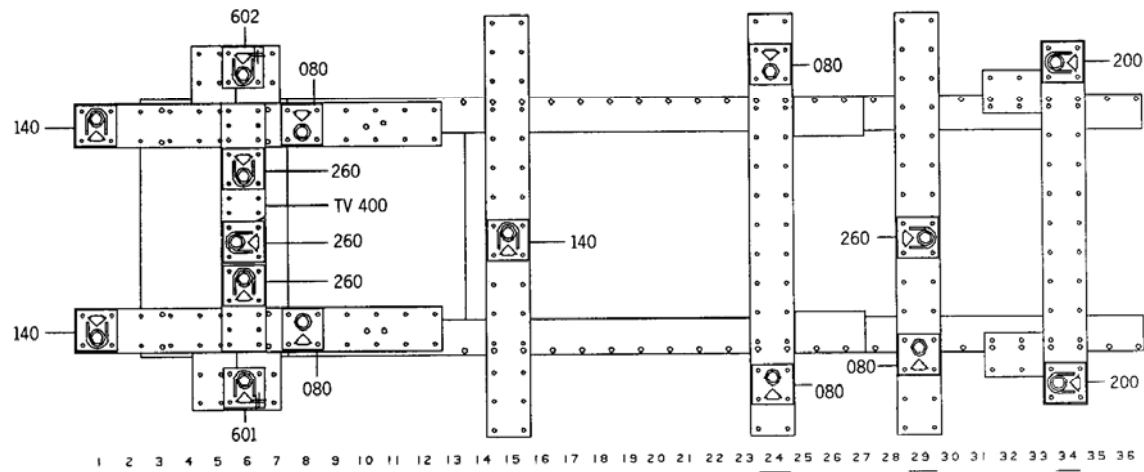
ALFA ROMEO

| REP. | REFERENCE | PDS | NB | MZ |
|------|-----------|-----|----|-----|
| 1 | 526.701 | 2.7 | 1 | 140 |
| 2 | 526.702 | 2.7 | 1 | 140 |
| 3 | 526.703 | 4.7 | 1 | 260 |
| 4 | 526.704 | 3.5 | 1 | 260 |
| 5 | 526.705 | 3.5 | 1 | 260 |
| 6 | 526.706 | 2.5 | 1 | 602 |
| 7 | 526.707 | 2.5 | 1 | 601 |
| 8 | 526.708 | 0.6 | 2 | |
| 9 | 526.709 | 2.3 | 1 | 080 |
| 10 | 526.710 | 2.3 | 1 | 080 |
| 11 | 526.711 | 2.3 | 1 | 140 |
| 12 | 526.712 | 1.9 | 1 | 080 |
| 13 | 526.713 | 1.9 | 1 | 080 |
| 14 | 526.714 | 3.2 | 2 | |
| 15 | 526.715 | 2.0 | 1 | 260 |
| 16 | 526.716 | 2.5 | 1 | 080 |
| 17 | 526.717 | 2.2 | 1 | 200 |
| 18 | 526.718 | 2.2 | 1 | 200 |
| 19 | 526.719 | 0.1 | 2 | |

| | | |
|---|--------------|---|
| ① | M 10x90 | 2 |
| ② | CHC 12x25 TB | 8 |
| | M 12x25 | 2 |
| | M 8x20 | 4 |

526.300.

50 kg 03.11.87 401 - D - 4A



8 Réparation
 Instandsetzung
 Rebuilding
 Ricostruzione
 Reparación

8 Contrôle
 Überprüfung
 Checking
 Controllo
 Control