

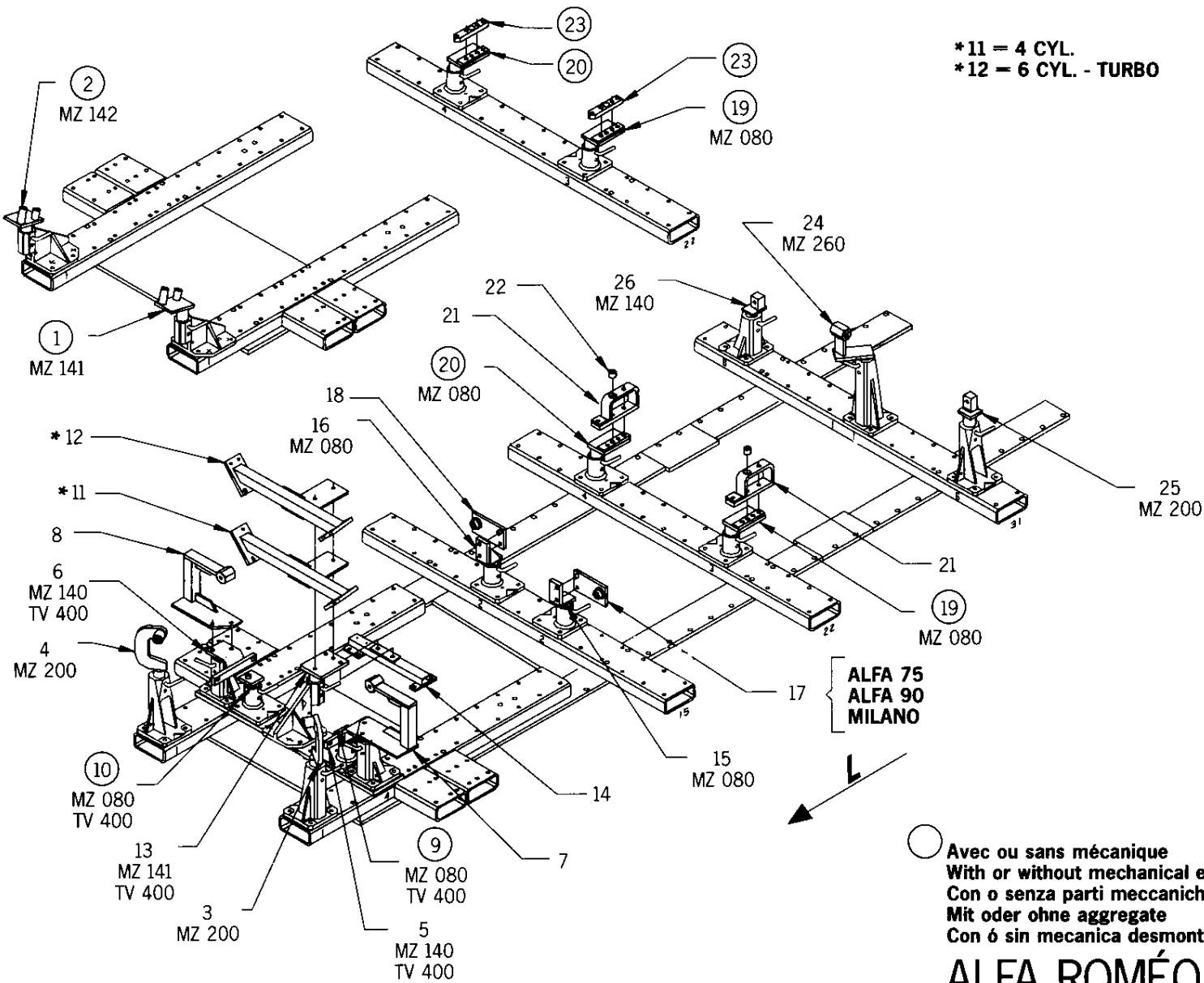


# CELETTE

VIENNE-FRANCE

# ALFA ROMEO ALFETTA - GIULIETTA ALFA 75 - ALFA 90

\*11 = 4 CYL.  
\*12 = 6 CYL. - TURBO



○ Avec ou sans mécanique  
 With or without mechanical elements  
 Con o senza parti meccaniche  
 Mit oder ohne aggregate  
 Con ó sin mecanica desmontada

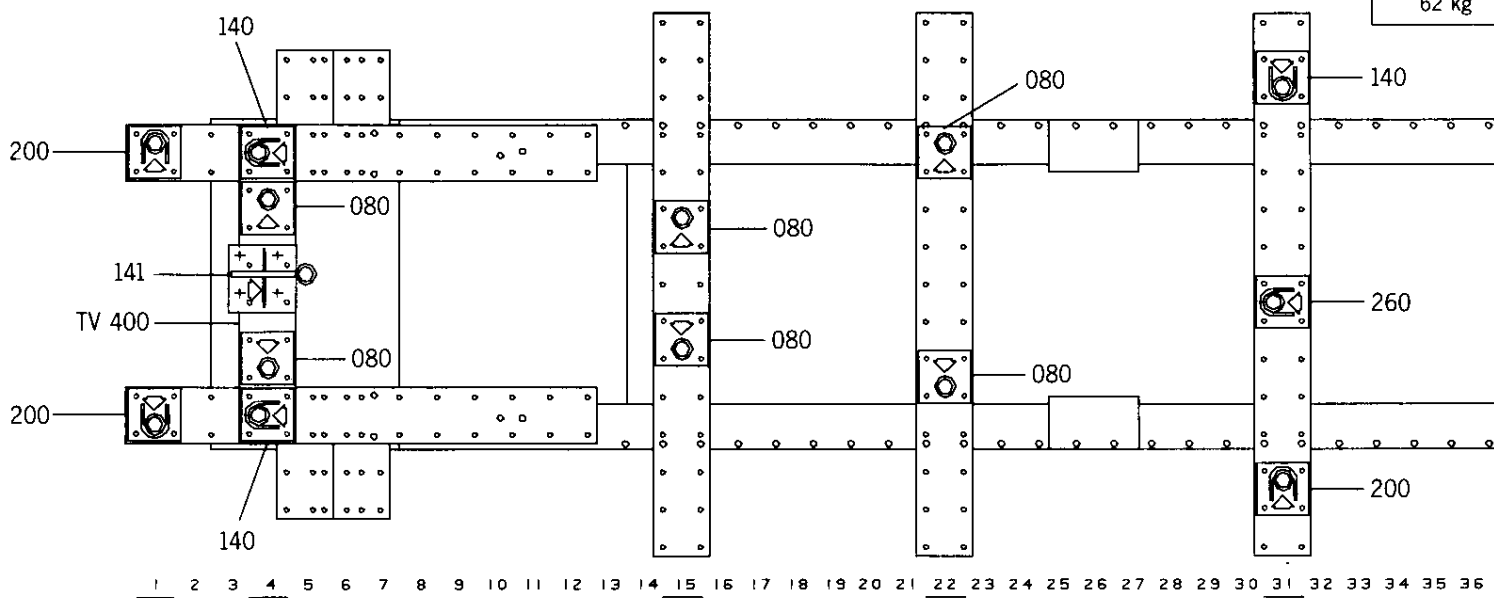
## ALFA ROMEO

REP.	RÉFÉRENCE	PDS	NB	MZ
1	525.701	2.3	1	141
2	525.702	2.3	1	142
3	525.703	2.4	1	200
4	525.704	2.4	1	200
5	525.705	2.6	1	140
6	525.706	2.6	1	140
7	525.707	3.8	1	
8	525.708	3.8	1	
9	525.709	1.0	1	080
10	525.710	1.0	1	080
11	525.711	6.3	1	
12	525.712	6.7	1	
13	525.713	2.2	1	141
14	525.714	1.8	1	
15	525.715	1.5	1	080
16	525.716	1.5	1	080
17	525.717	1.0	1	
18	525.718	1.0	1	
19	525.719	2.1	1	080
20	525.720	2.1	1	080
21	525.721	1.4	2	
22	525.722	0.1	2	
23	525.723	0.5	2	
24	525.724	2.6	1	260
25	525.725	1.7	1	200
26	525.726	1.4	1	140

LLU 12	2
M 8 x 25	4
M 8 x 60'	2
M 8 x 80	2
M 10.125 x 40	6
M 10.125 x 130	2
M 12 x 20	2
M 12 x 35	4
M 12 x 30	8
M 12 x 45	2

# 525.300

62 kg | 11.17.87 | 401 - D - 3A



1 2 3 4 5 6 7 8 9 10 11 12 13 14 15 16 17 18 19 20 21 22 23 24 25 26 27 28 29 30 31 32 33 34 35 36

