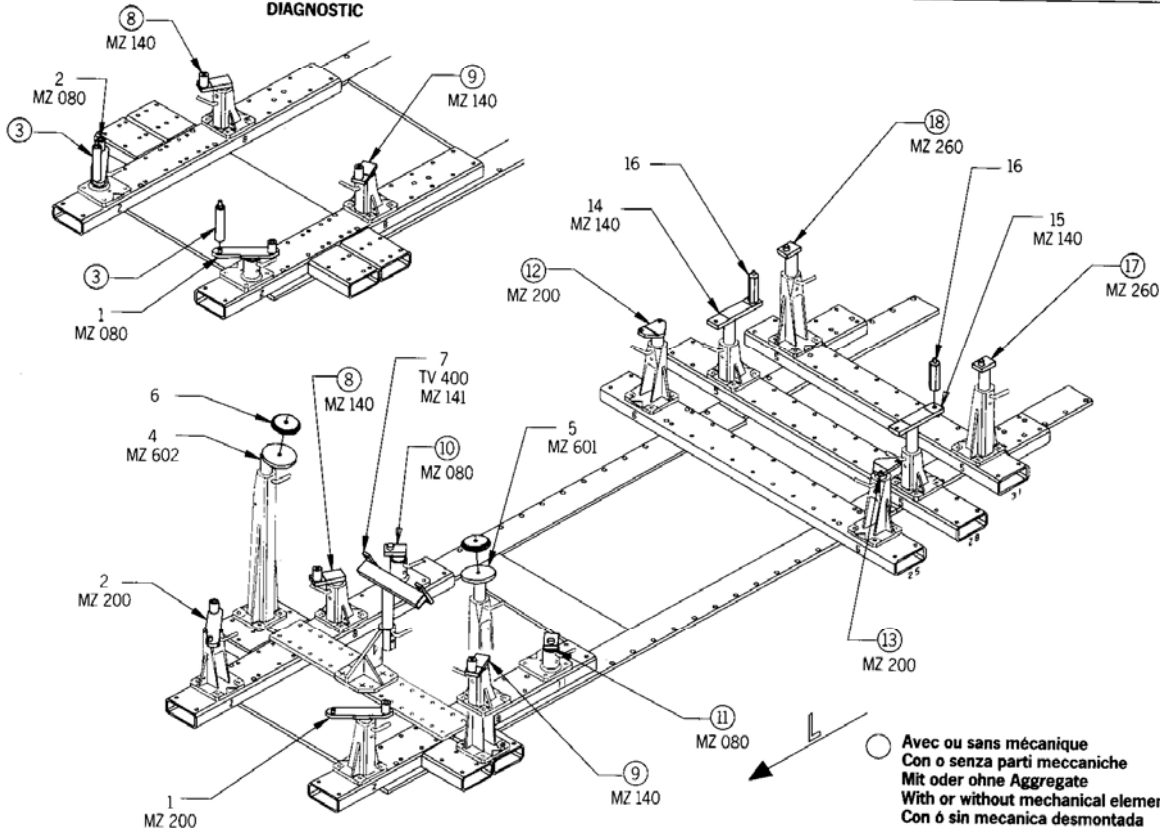


DIAGNOSTIC



○ Avec ou sans mécanique
Con o senza parti meccaniche
Mit oder ohne Aggregate
With or without mechanical elements
Con ó sin mecanica desmontada

REP.	REFERENCE	PDS.	NB	MZ
1	516.701	3,4	1	200/080
2	516.702	3,4	1	200/080
3	516.703	0,7	2	
4	516.704	2,7	1	602
5	516.705	2,7	1	601
6	516.706	1,2	2	
7	516.707	4,0	1	141
8	516.708	1,8	1	140
9	516.709	1,8	1	140
10	516.710	1,2	1	080
11	516.711	1,2	1	080
12	516.712	1,8	1	200
13	516.713	1,8	1	200
14	516.714	3,1	1	140
15	516.715	3,1	1	140
16	516.716	0,7	2	
17	516.717	1,9	1	260
18	516.718	1,9	1	260

M 10.125 x 30	12
M 10.125 x 80	2
M 12 x 35	2
M 14 x 140	2

SUBARU

516.300

42 kg	10.04.87	443-D-3A
-------	----------	----------

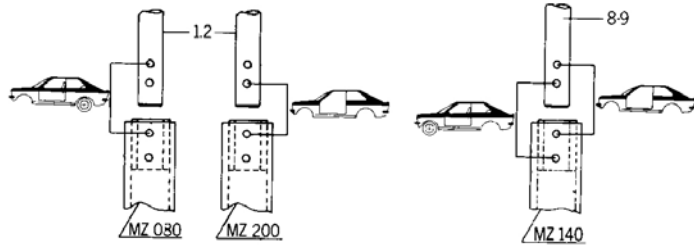
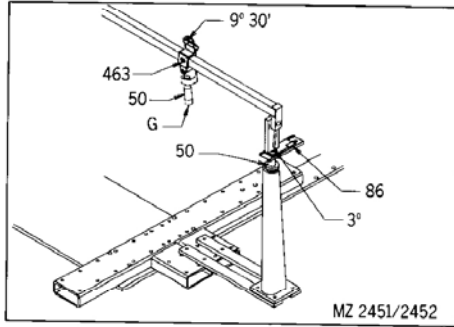
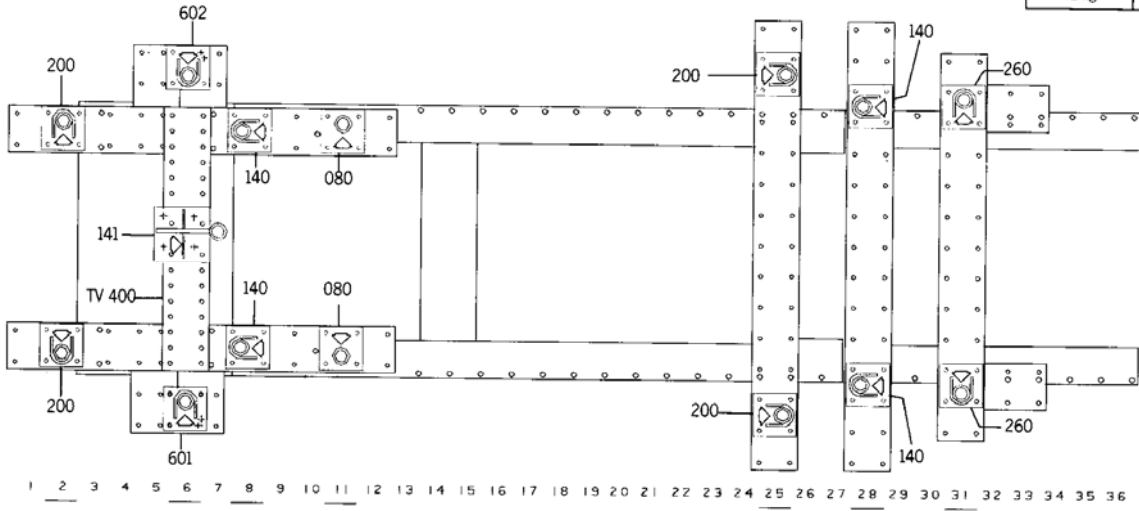


Fig. 1

Fig. 2

Réparation
Instandsetzung
Rebuilding
Riconstruzione
Reparación

Contrôle
Überprüfung
Checking
Controllo
Control