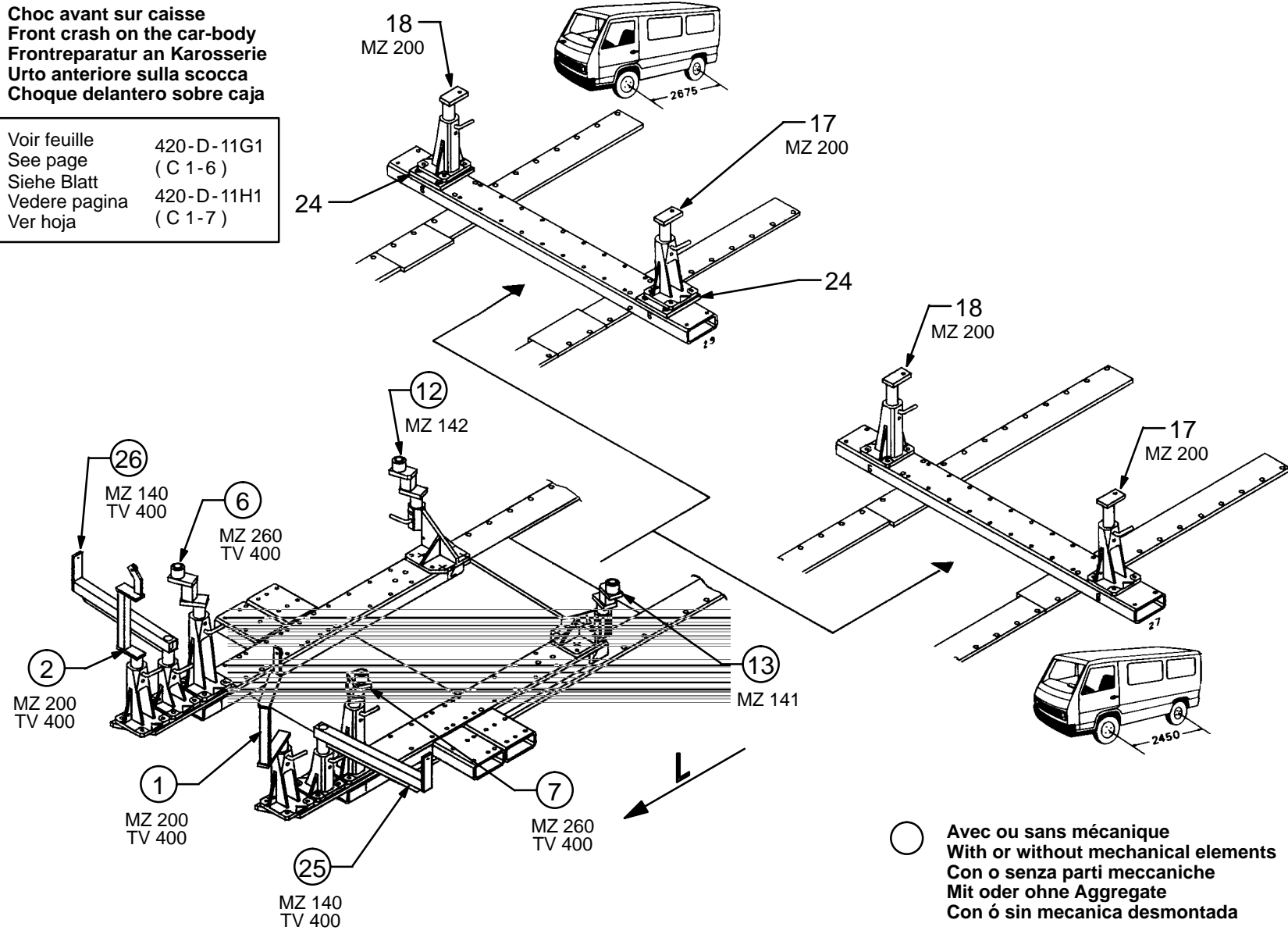


Choc avant sur caisse
Front crash on the car-body
Frontreparatur an Karosserie
Urto anteriore sulla scocca
Choque delantero sobre caja

Voir feuille 420-D-11G1
See page (C 1-6)
Siehe Blatt
Vedere pagina 420-D-11H1
Ver hoja (C 1-7)



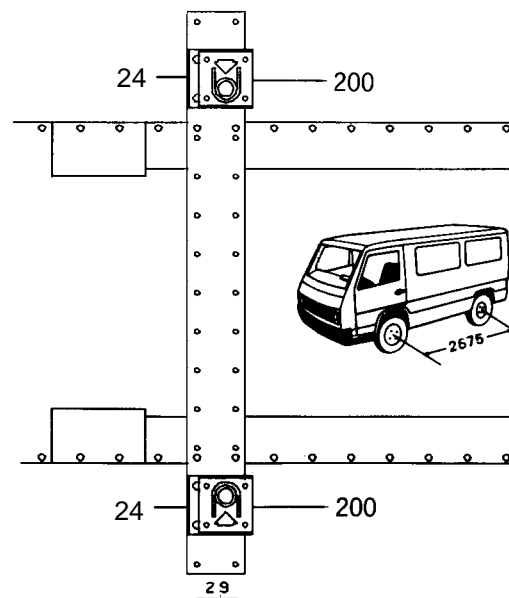
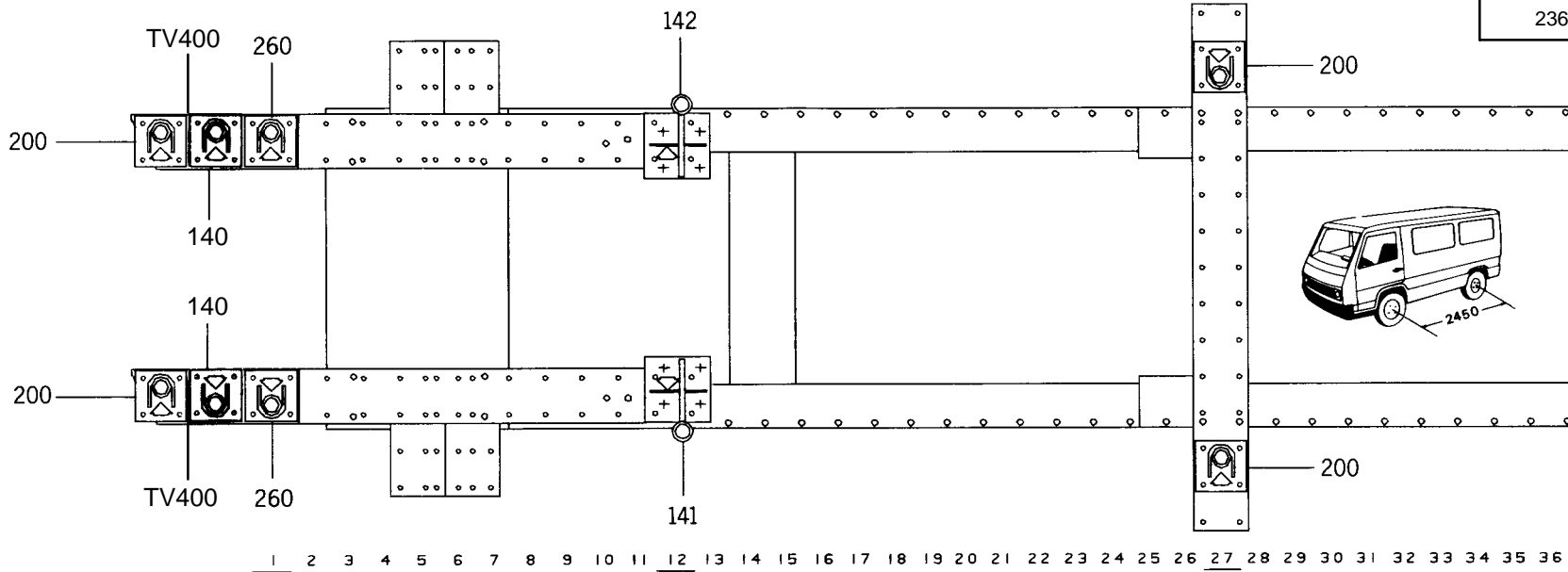
REP.	REFERENCE	PDS	NB	MZ
1	512.701	3,5	1	
2	512.702	2,8	1	
3	512.703	3,5	1	
4	512.704	2,5	1	
5	512.705	1,4	1	
6	512.706	3,0	1	
7	512.707	3,0	1	
8	512.708	3,4	1	
9	512.709	3,4	1	
10	512.710	3,7	1	
11	512.711	3,7	1	
12	512.712	2,8	1	
13	512.713	2,8	1	
14	512.714	3,4	1	
15	512.715	3,2	1	
16	512.716	3,2	1	
17	512.717	2,1	1	
18	512.718	2,1	1	
19	512.719	3,2	1	
20	512.720	3,2	1	
21	512.721	1,7	1	
22	512.722	1,7	1	
23	512.723	0,5	2	
24	512.724	2,6	4	
25	512.725	5,1	1	
26	512.726	5,1	1	
27	512.727	3,8	2	
28	512.728	2,8	1	
29	512.729	2,8	1	
	V.58	0,1	1	
	MZ 080	3,0	6	
	MZ 140	4,0	7	
	MZ 200	5,0	6	
	MZ 260	6,0	3	
	MZ 141	7,0	1	
	MZ 142	7,0	1	
	TV 400	16,0	2	

	M 8x16	2
	M 10x30	3
	M 10x40	2
	M 10x80	4
	M 10x100	2
	M 10x120	4
	M 12x25	38
	955.751	8
	M 12.150x80	6
	M 12.150x40	2
	M 12x25	16
	M 12x80	6
	M 16x30	2
	LL 12	6

MERCEDES-BENZ

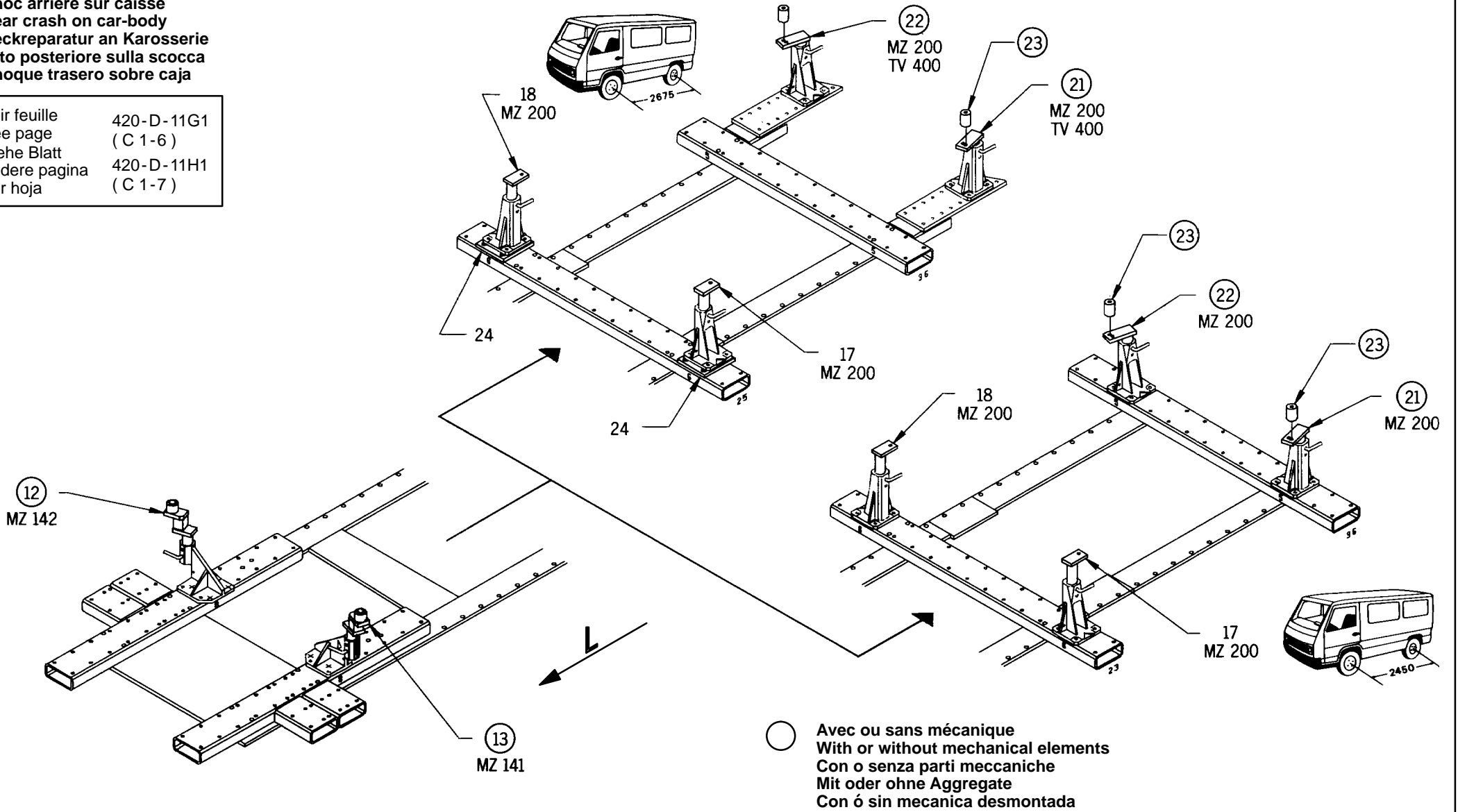
512.820

236 Kg 08.04.98 420-D-11 I1



Choc arrière sur caisse
Rear crash on car-body
Heckreparatur an Karosserie
Urto posteriore sulla scocca
Choque trasero sobre caja

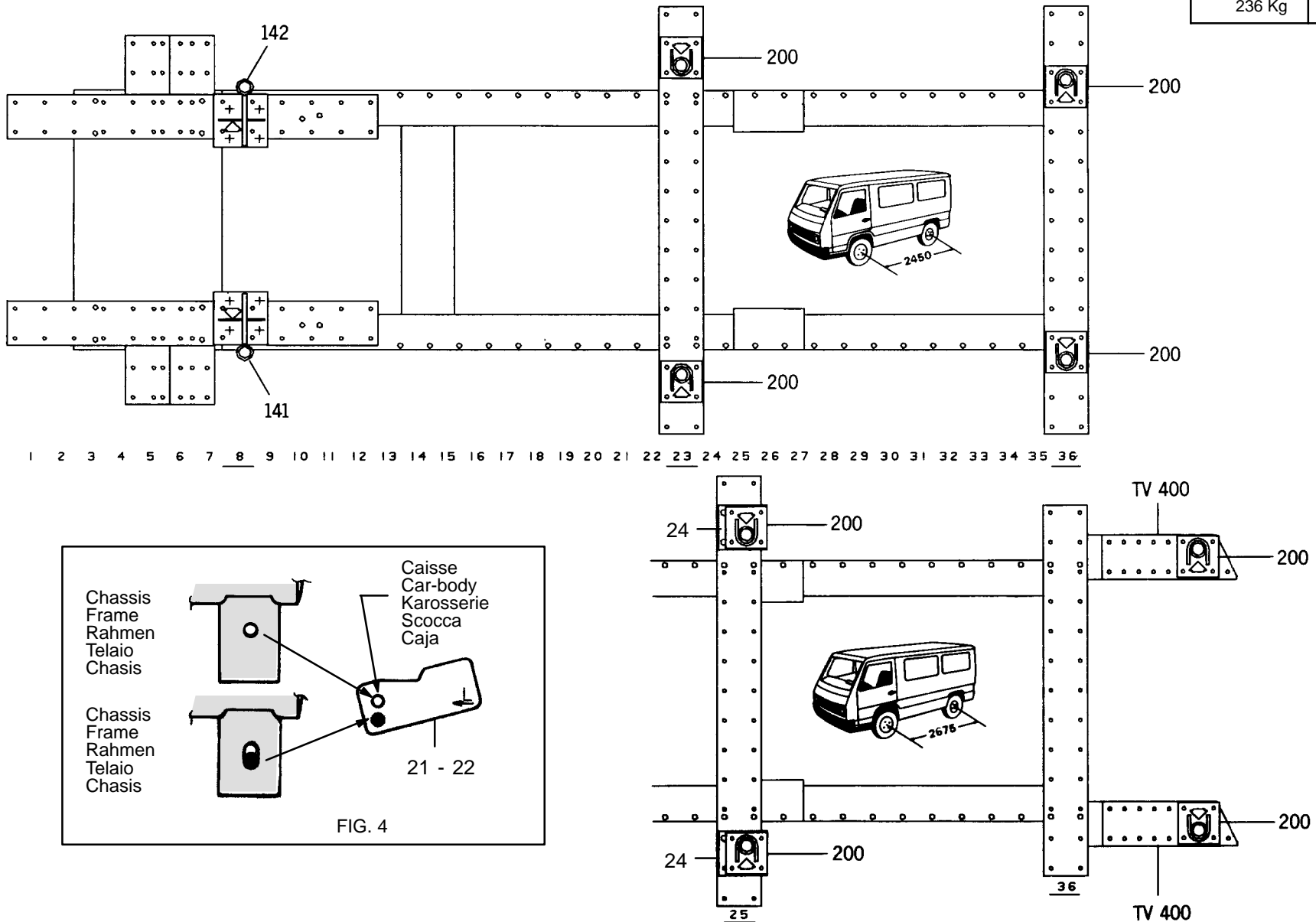
Voir feuille 420-D-11G1
See page (C 1-6)
Siehe Blatt 420-D-11H1
Vedere pagina (C 1-7)
Ver hoja (C 1-7)



MERCEDES-BENZ

512.820

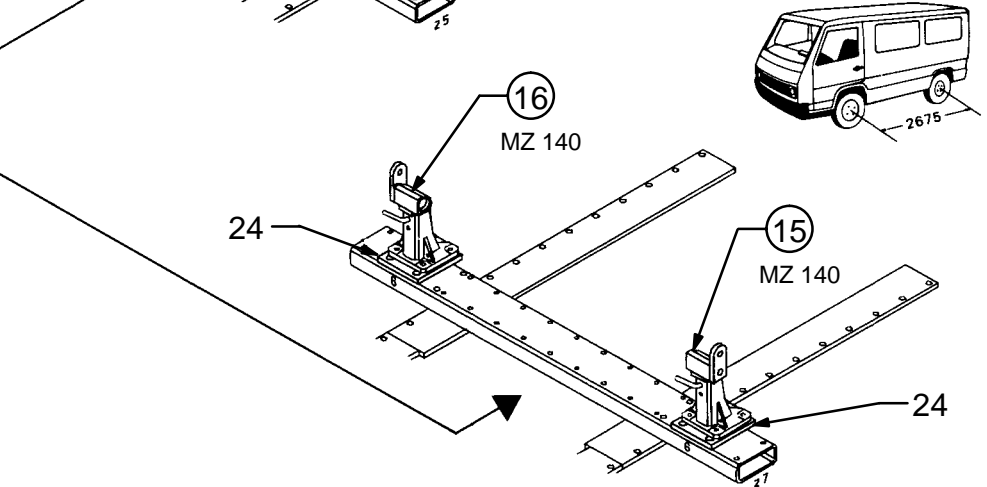
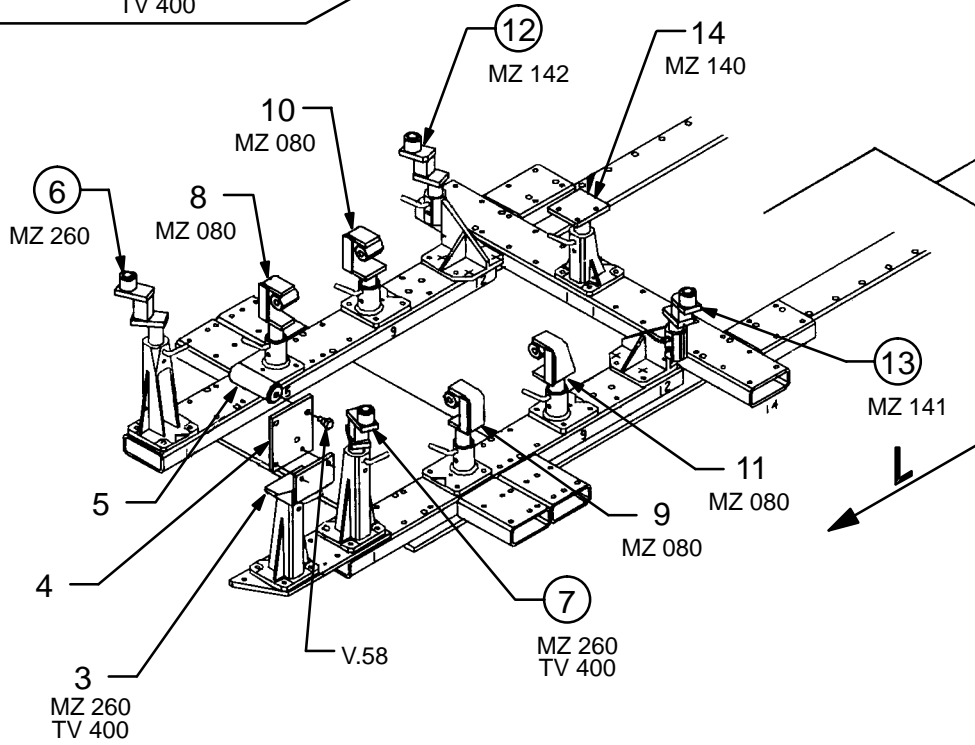
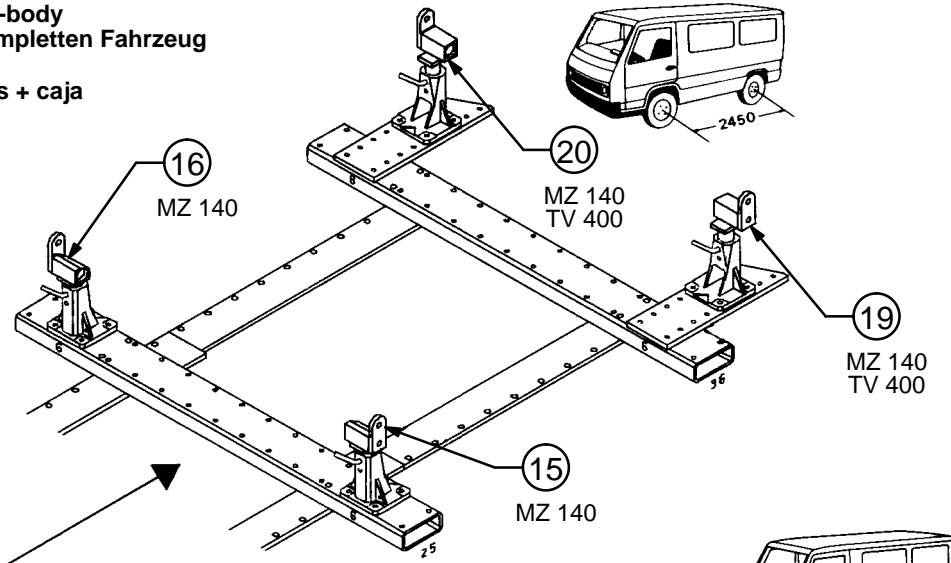
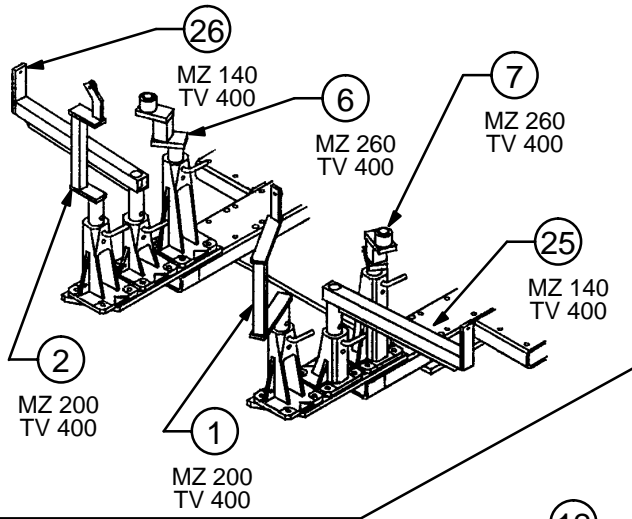
236 Kg 18.03.93 420-D-11 J1



Choc avant sur chassis ou chassis plus caisse
Front crash on the frame or frame + car-body
Frontreparatur am Rahmen oder am kompletten Fahrzeug
Urto anteribre sul telaio + scocca
Choque delantero sobre chasis o chasis + caja

12/89

Voir feuille 420-D-11G1
See page (A 1-9 oder D 1-7)
Siehe Blatt 420-D-11H1
Vedere pagina (A 1-8 oder D 1-6)
Ver hoja

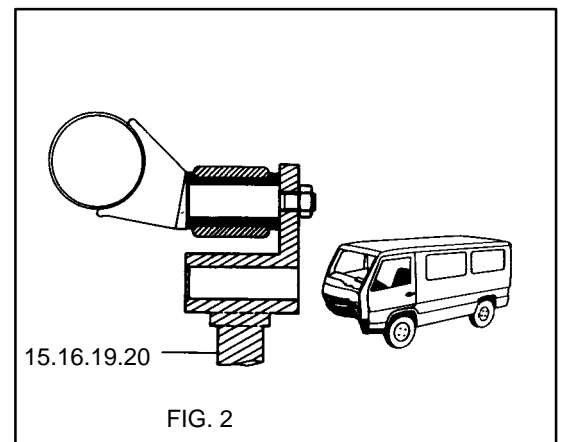
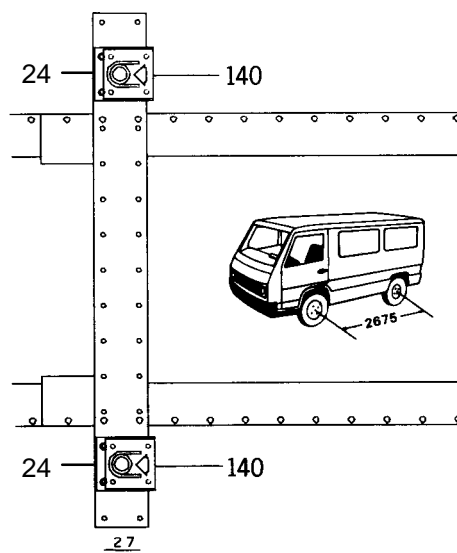
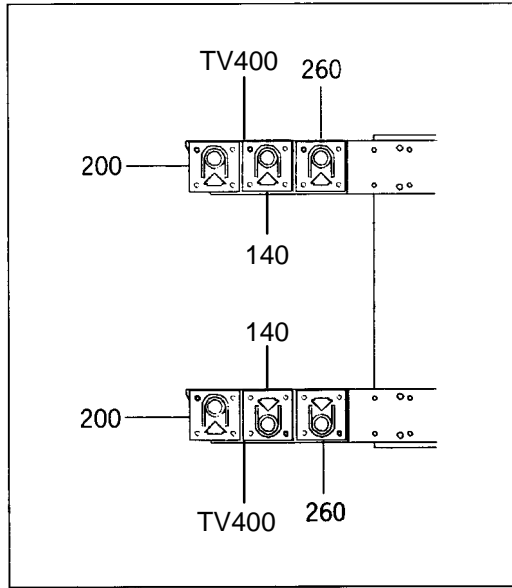
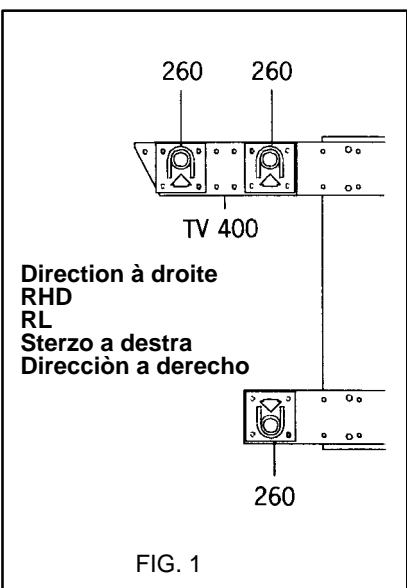
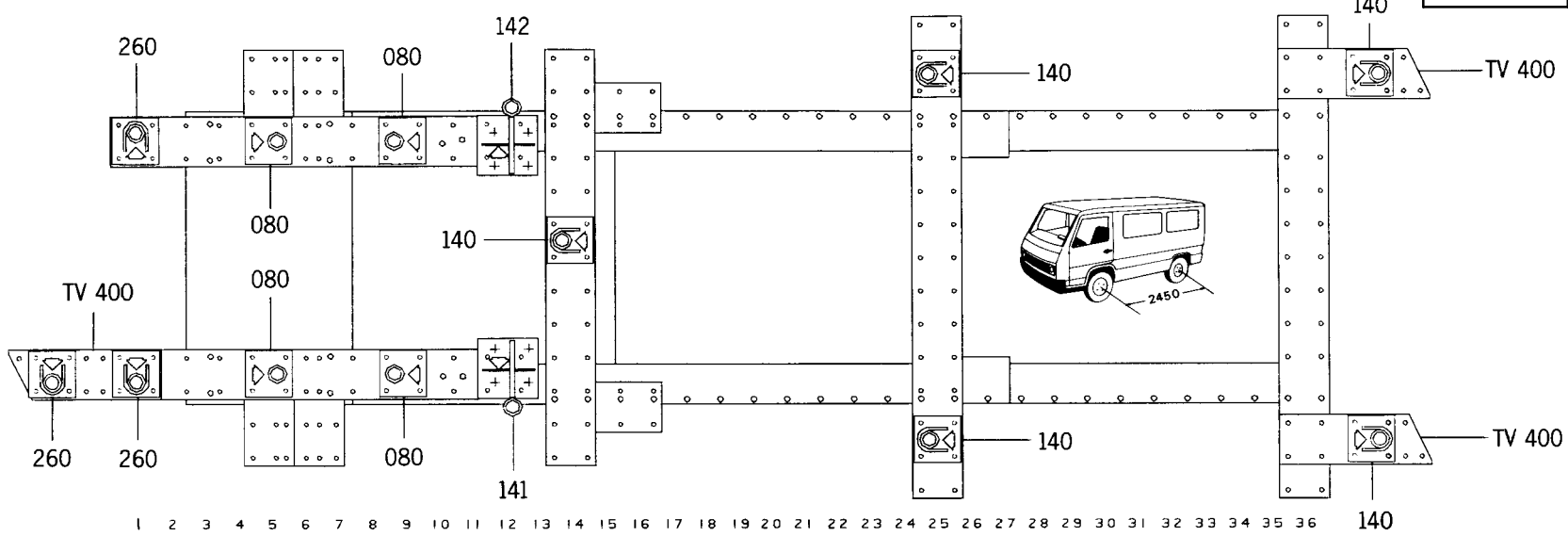


○ Avec ou sans mécanique
With or without mechanical elements
Con o senza parti meccaniche
Mit oder ohne Aggregate
Con ó sin mecanica desmontada

MERCEDES-BENZ

512.820

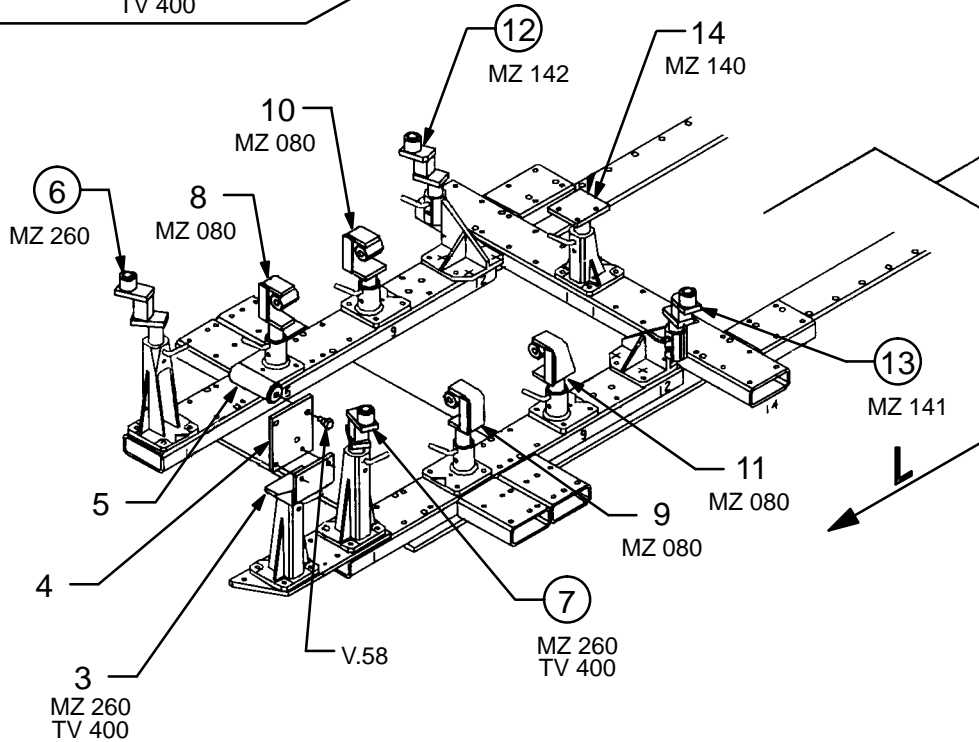
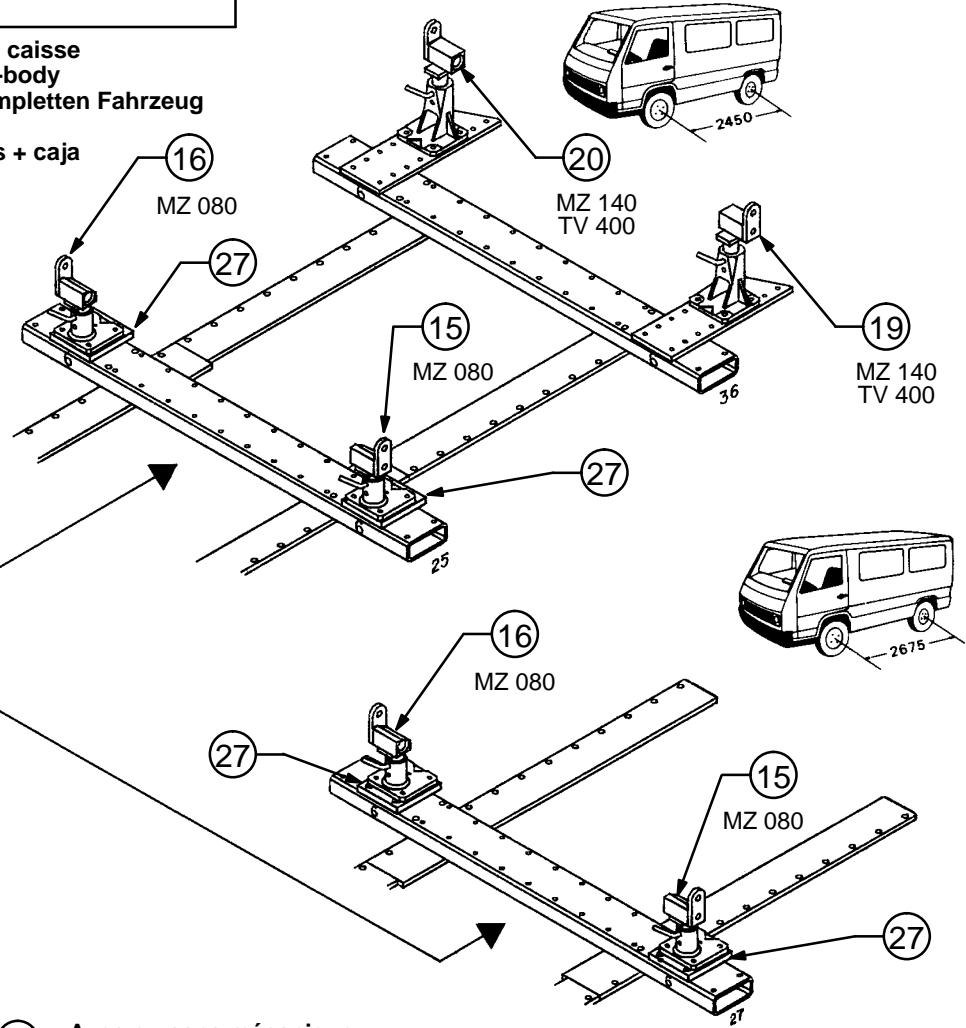
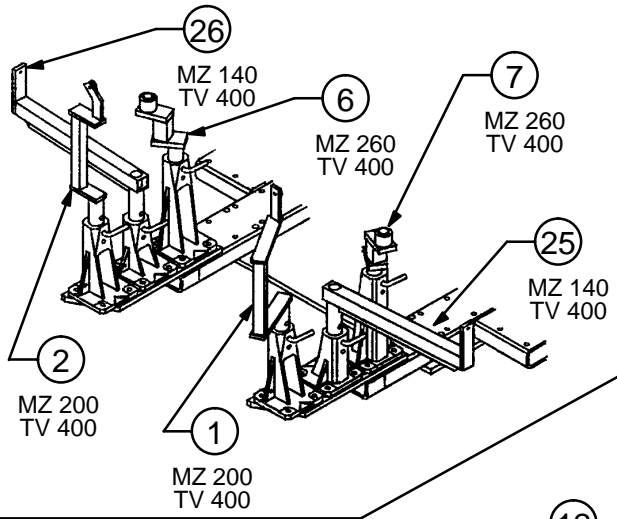
236 Kg 18.03.93 420-D-11 K1



A partir du N° de chasis57303. 12/89 →
Ab chasis N°57303.

Choc avant sur chasis ou chasis plus caisse
Front crash on the frame or frame + car-body
Frontreparatur am Rahmen oder am kompletten Fahrzeug
Urto anteribre sul telaio + scocca
Choque delantero sobre chasis o chasis + caja

Voir feuille 420-D-11G1
See page (A 1-9 oder D 1-7)
Siehe Blatt
Vedere pagina 420-D-11H1
Ver hoja (A 1-8 oder D 1-6)

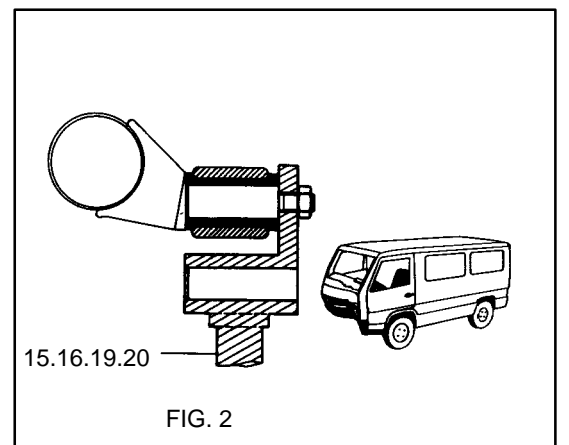
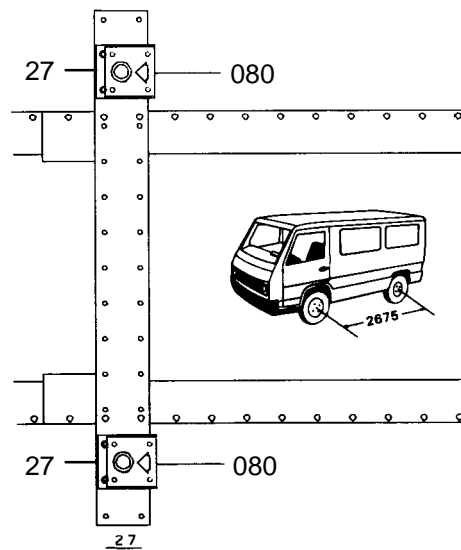
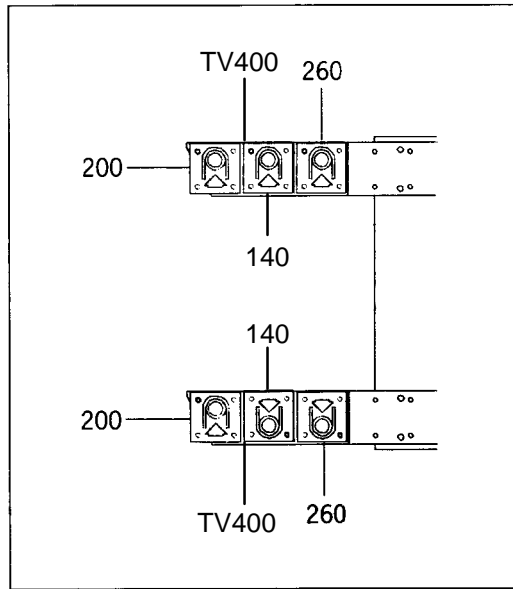
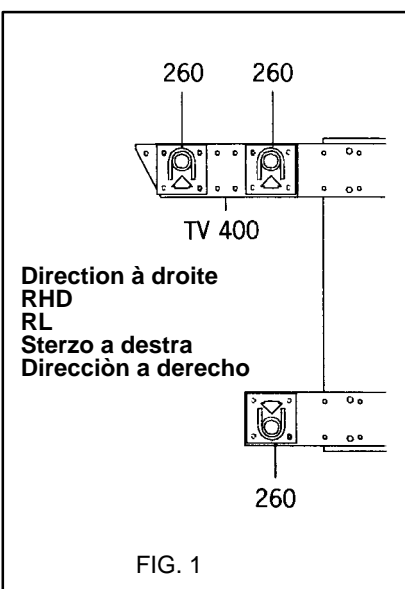
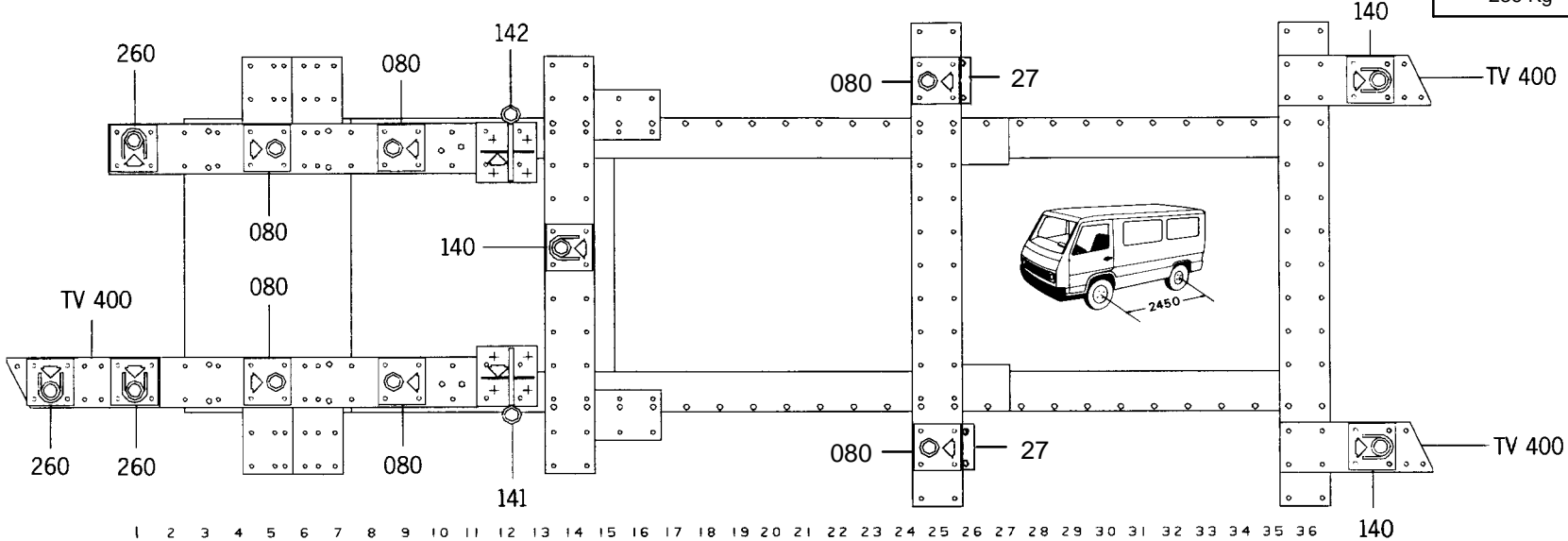


○ Avec ou sans mécanique
With or without mechanical elements
Con o senza parti meccaniche
Mit oder ohne Aggregate
Con ó sin mecanica desmontada

MERCEDES-BENZ

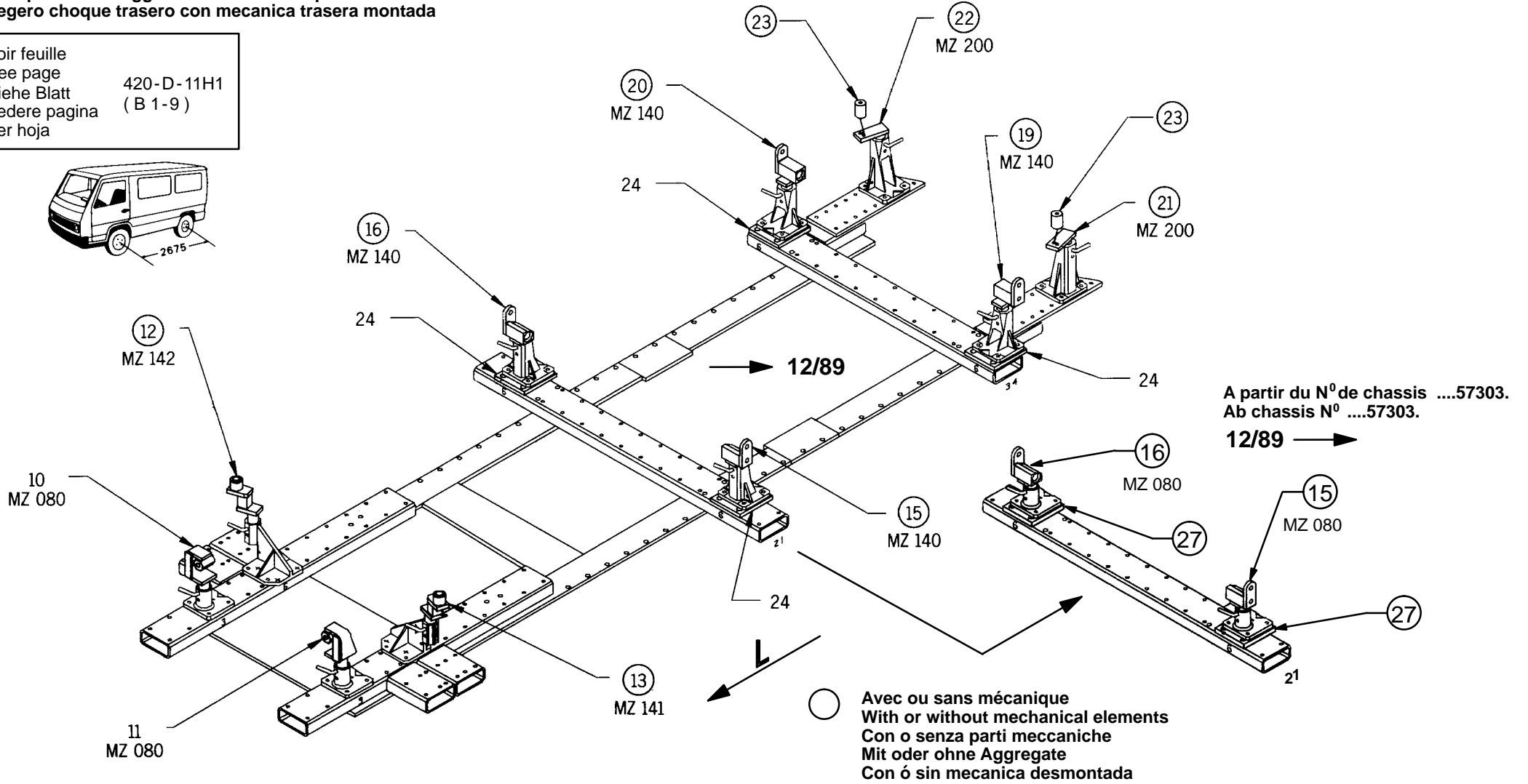
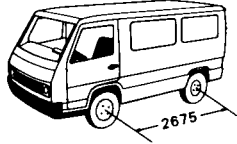
512.820

236 Kg 18.03.93 420-D-11 L1



Léger choc arrière avec mécanique arrière
Light rear crash with rear mechanical units in place
Leichter Heckshaden bei eingebauten Aggregaten (hinten)
Urto posteriore leggero con meccanica posteriore
Legero choque trasero con mecanica trasera montada

Voir feuille
See page
Siehe Blatt
Vedere pagina
Ver hoja



A partir du N° de chassis57303.
Ab chassis N°57303.

12/89 →

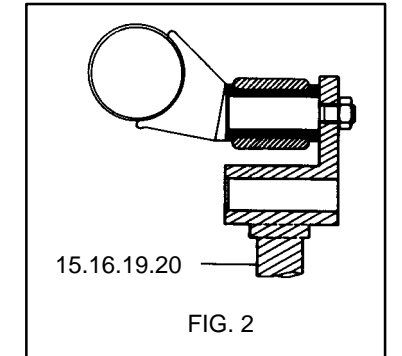
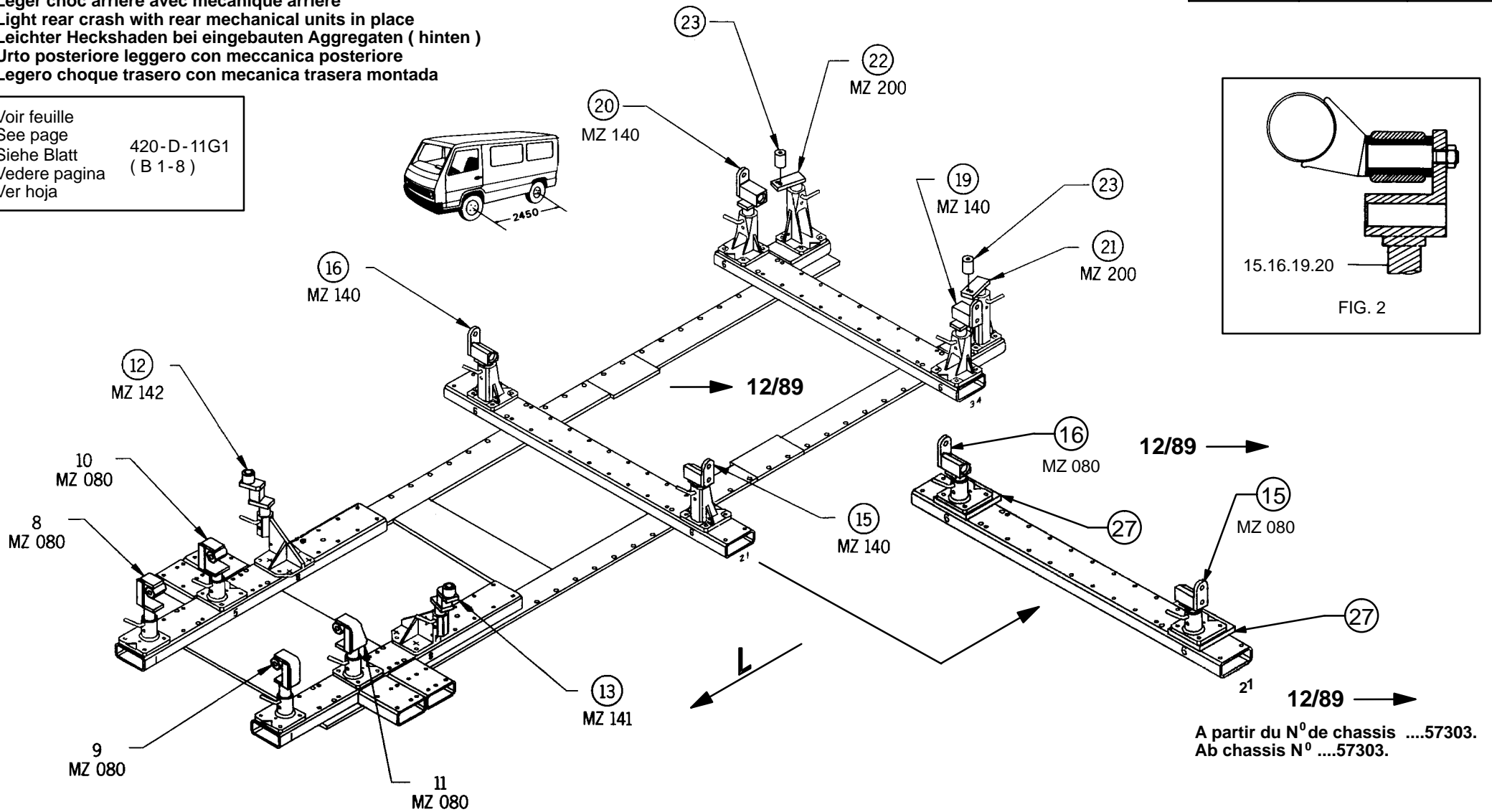
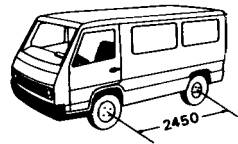
MERCEDES-BENZ

512.820

236 Kg	18.03.93	420-D-11 M1
--------	----------	-------------

Léger choc arrière avec mécanique arrière
Light rear crash with rear mechanical units in place
Leichter Heckshaden bei eingebauten Aggregaten (hinten)
Urto posteriore leggero con meccanica posteriore
Legero choque trasero con mecanica trasera montada

Voir feuille
See page
Siehe Blatt
Vedere pagina
Ver hoja

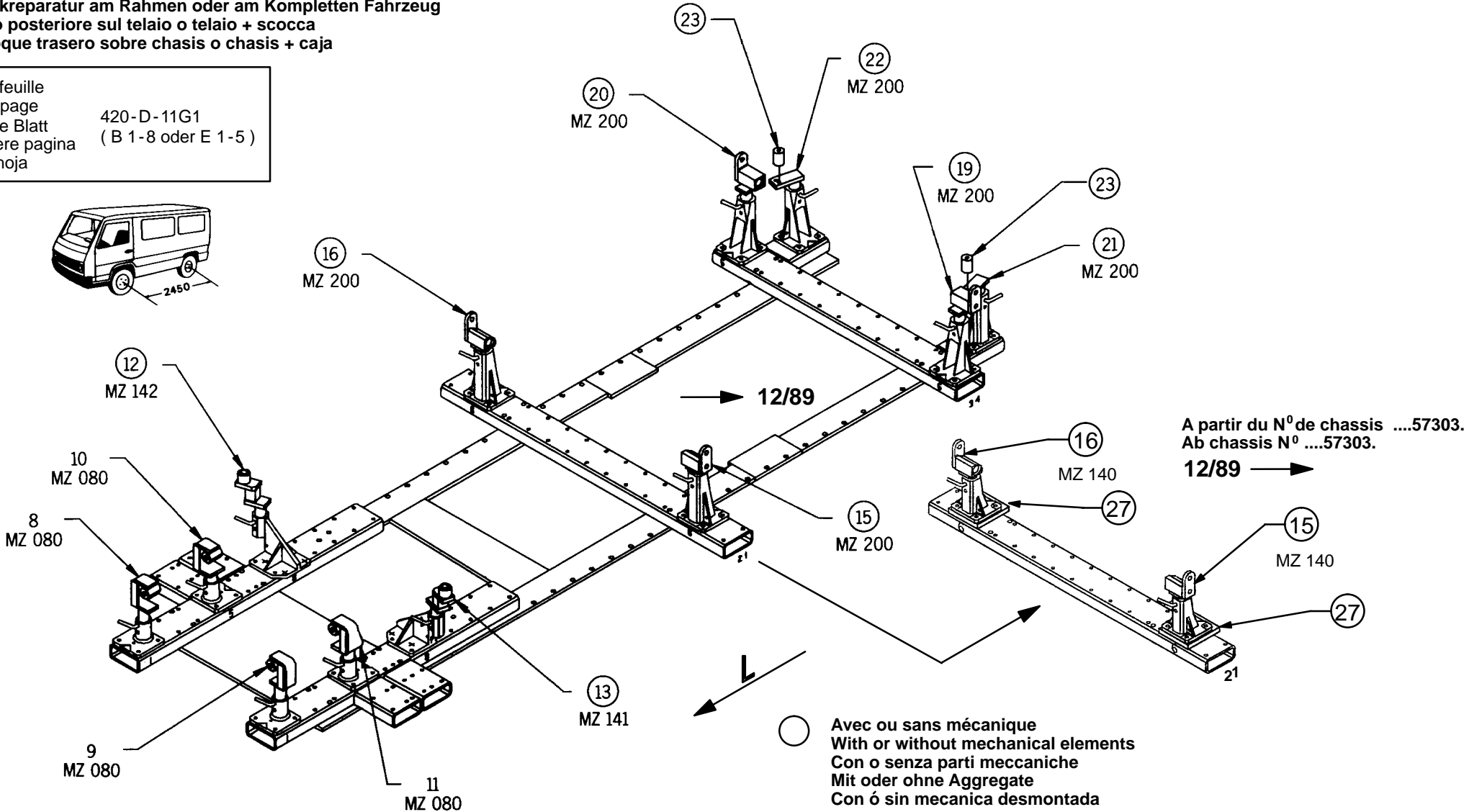


A partir du N° de chassis57303.
Ab chassis N°57303.

Choc arrière sur châssis ou châssis plus caisse
Rear crash on the frame or frame + car-body
Heckreparatur am Rahmen oder am Kompletten Fahrzeug
Urto posteriore sul telaio o telaio + scocca
Choque trasero sobre chasis o chasis + caja

Voir feuille
See page
Siehe Blatt
Vedere pagina
Ver hoja

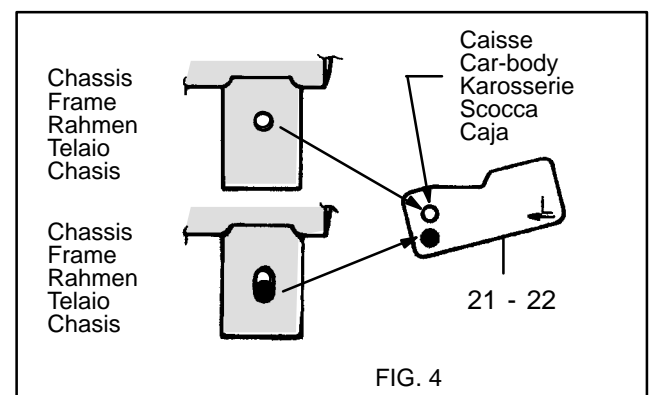
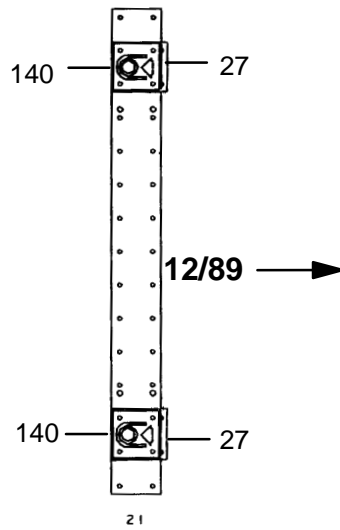
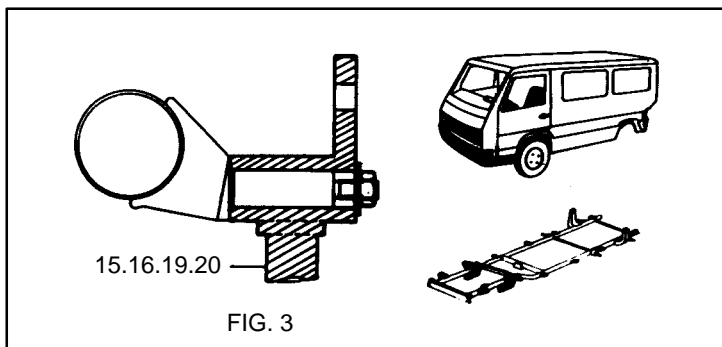
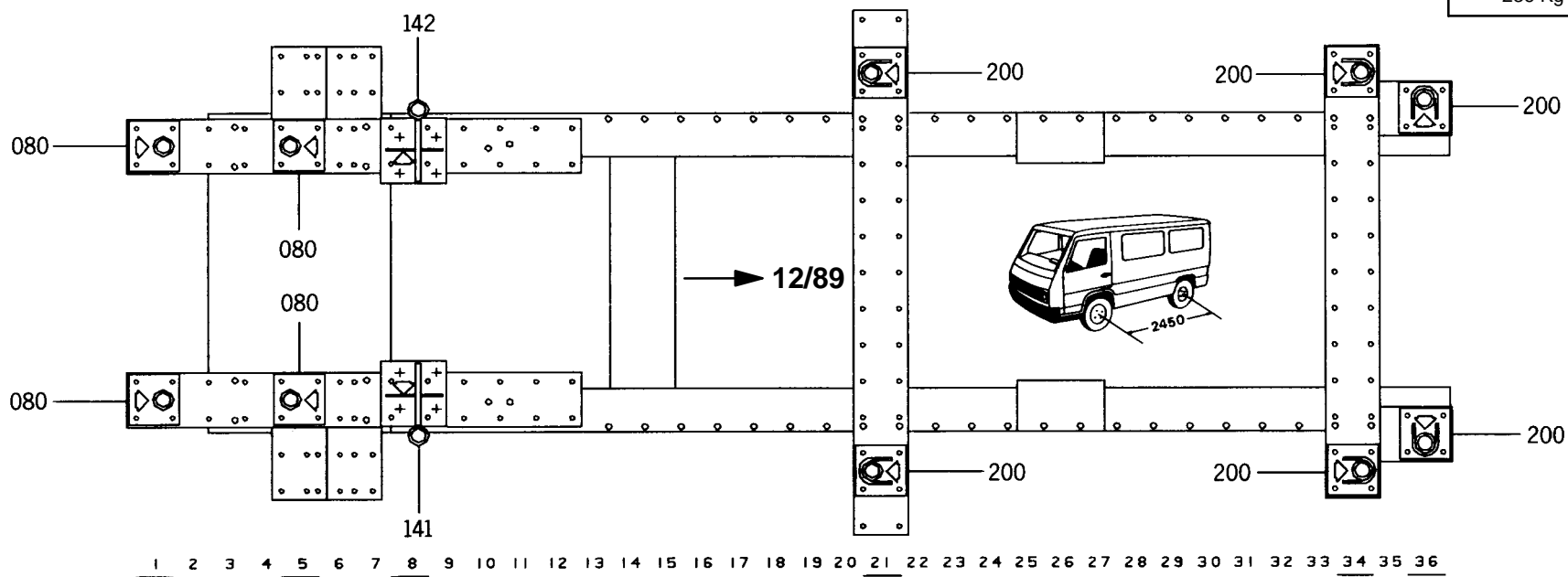
420-D-11G1
(B 1-8 oder E 1-5)



MERCEDES-BENZ

512.820

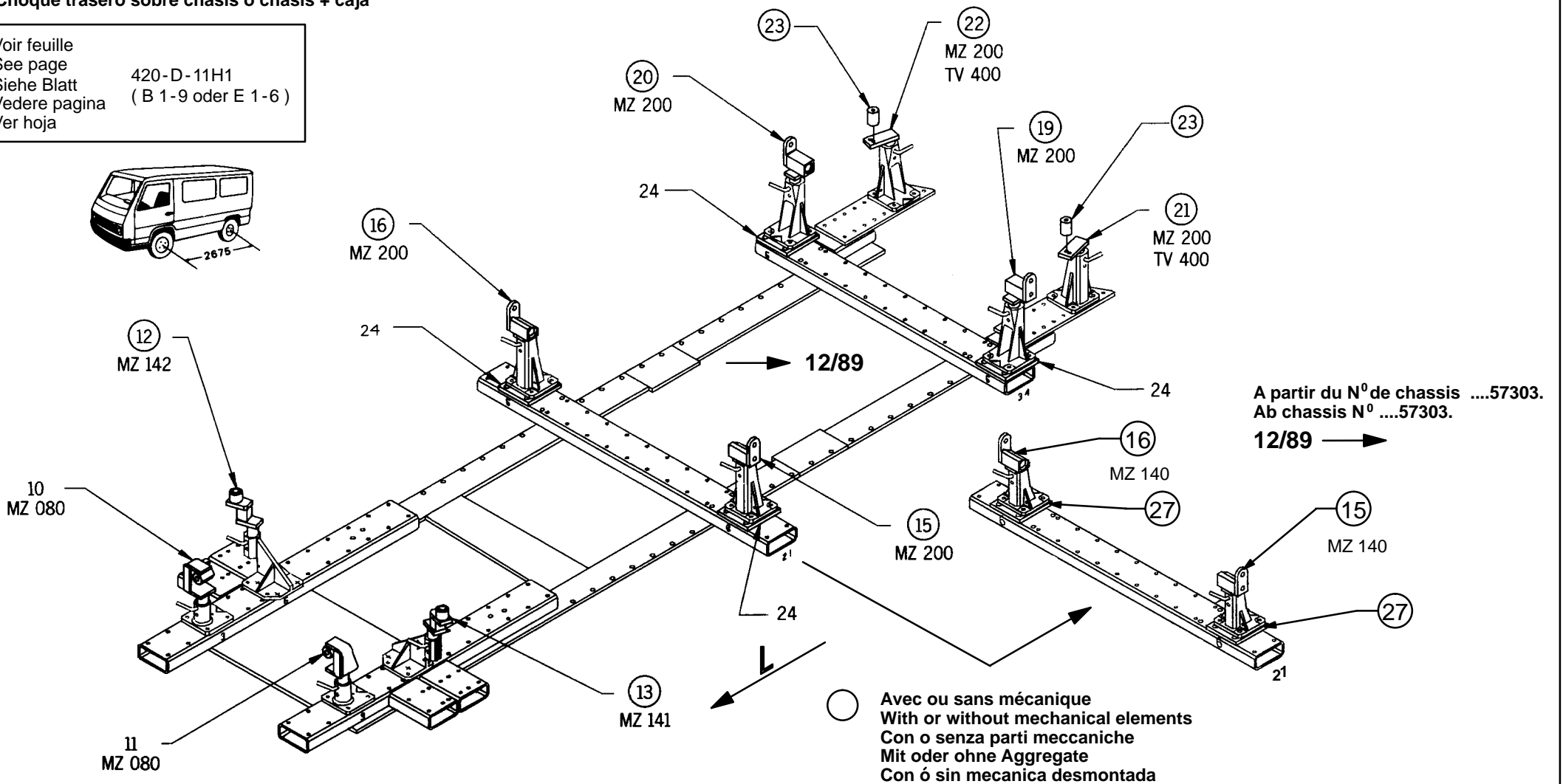
236 Kg 18.03.93 420-D-11 N1



Choc arrière sur châssis ou châssis plus caisse
Rear crash on the frame or frame + car-body
Heckreparatur am Rahmen oder am Kompletten Fahrzeug
Urto posteriore sul telaio o telaio + scocca
Choque trasero sobre chasis o chasis + caja

Voir feuille
See page
Siehe Blatt
Vedere pagina
Ver hoja

420-D-11H1
(B 1-9 oder E 1-6)



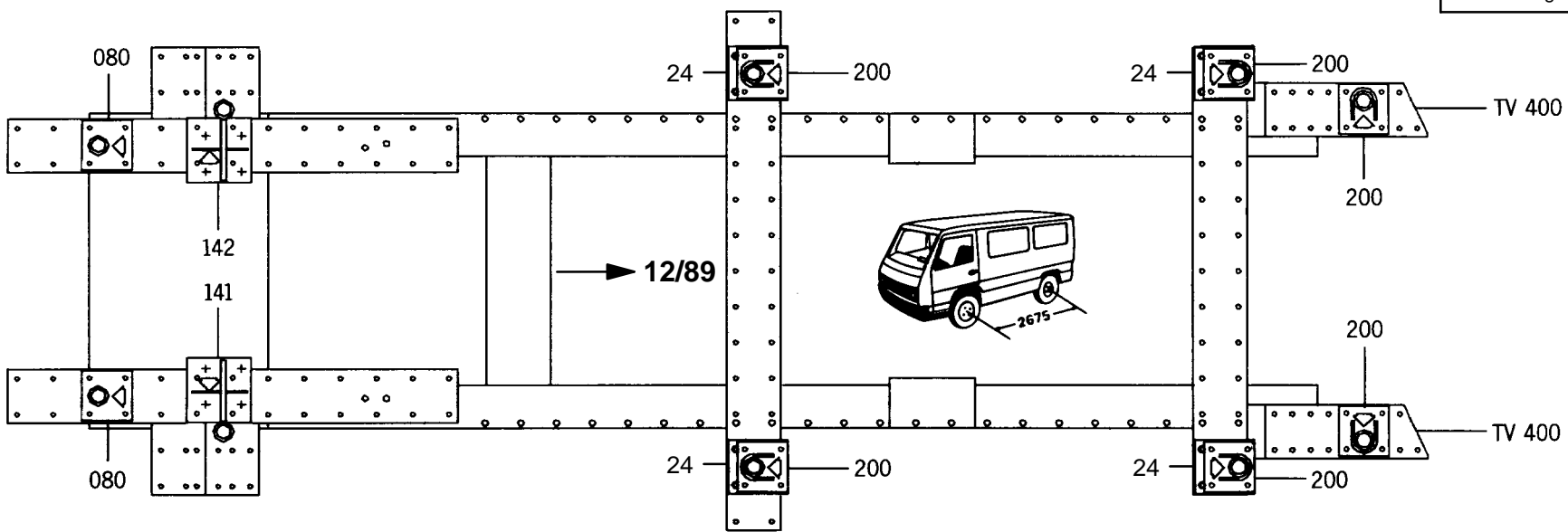
A partir du N° de châssis57303.
Ab chassis N°57303.

12/89 →

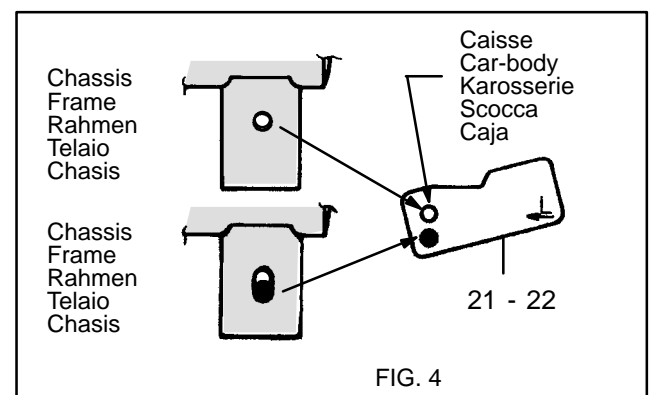
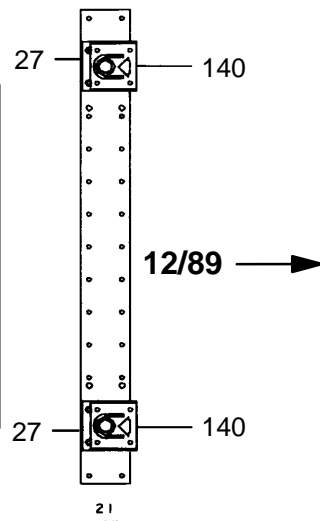
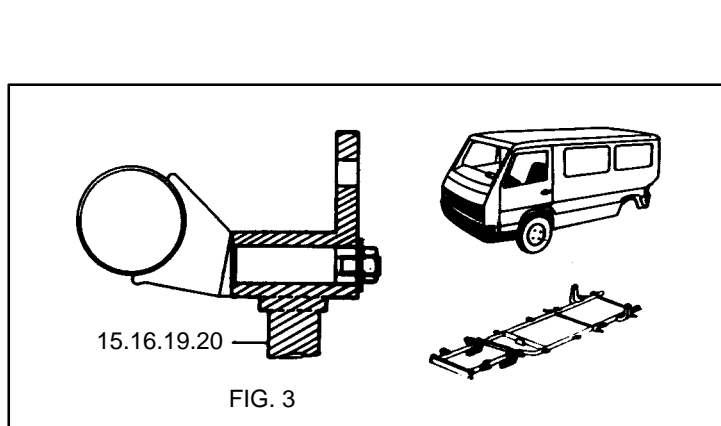
MERCEDES-BENZ

512.820

236 Kg 18.03.93 420-D-11 O1

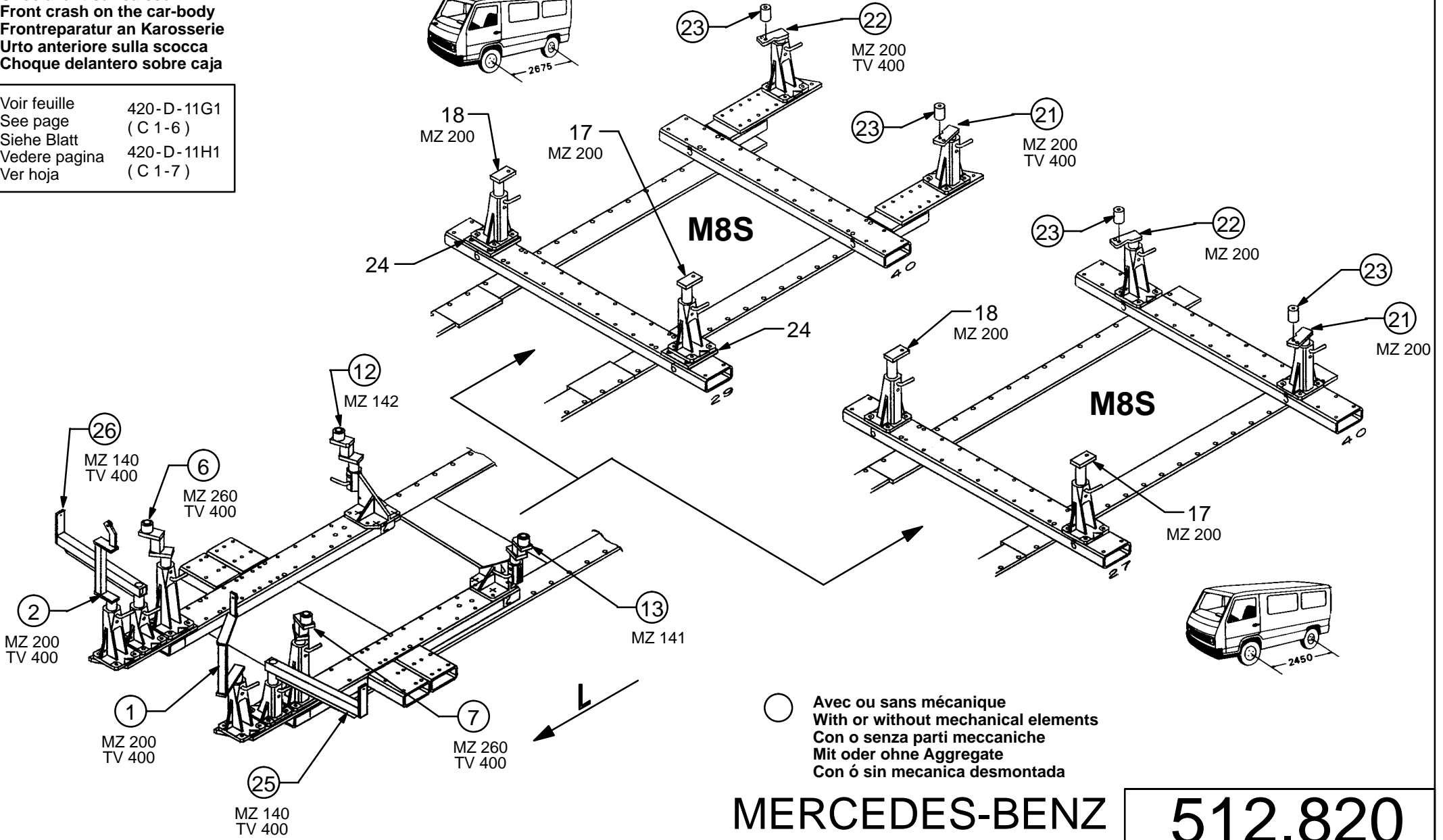


1 2 3 4 5 6 7 8 9 10 11 12 13 14 15 16 17 18 19 20 21 22 23 24 25 26 27 28 29 30 31 32 33 34 35 36



Choc avant sur caisse
Front crash on the car-body
Frontreparatur an Karosserie
Urto anteriore sulla scocca
Choque delantero sobre caja

Voir feuille 420-D-11G1
See page (C 1-6)
Siehe Blatt 420-D-11H1
Vedere pagina (C 1-7)
Ver hoja



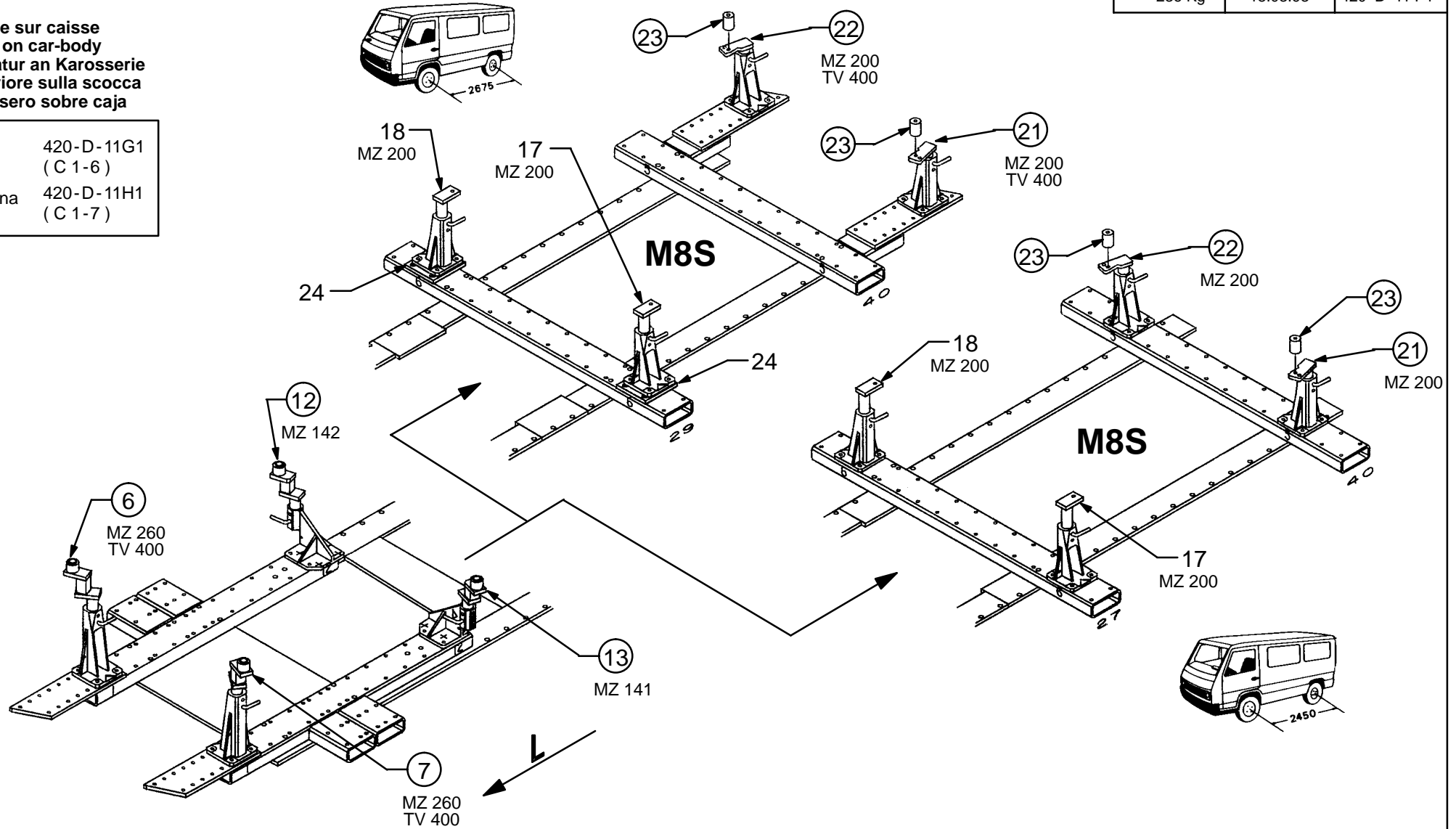
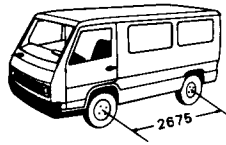
MERCEDES-BENZ

512.820

236 Kg 18.03.93 420-D-11 P1

Choc arrière sur caisse
Rear crash on car-body
Heckreparatur an Karosserie
Urto posteriore sulla scocca
Choque trasero sobre caja

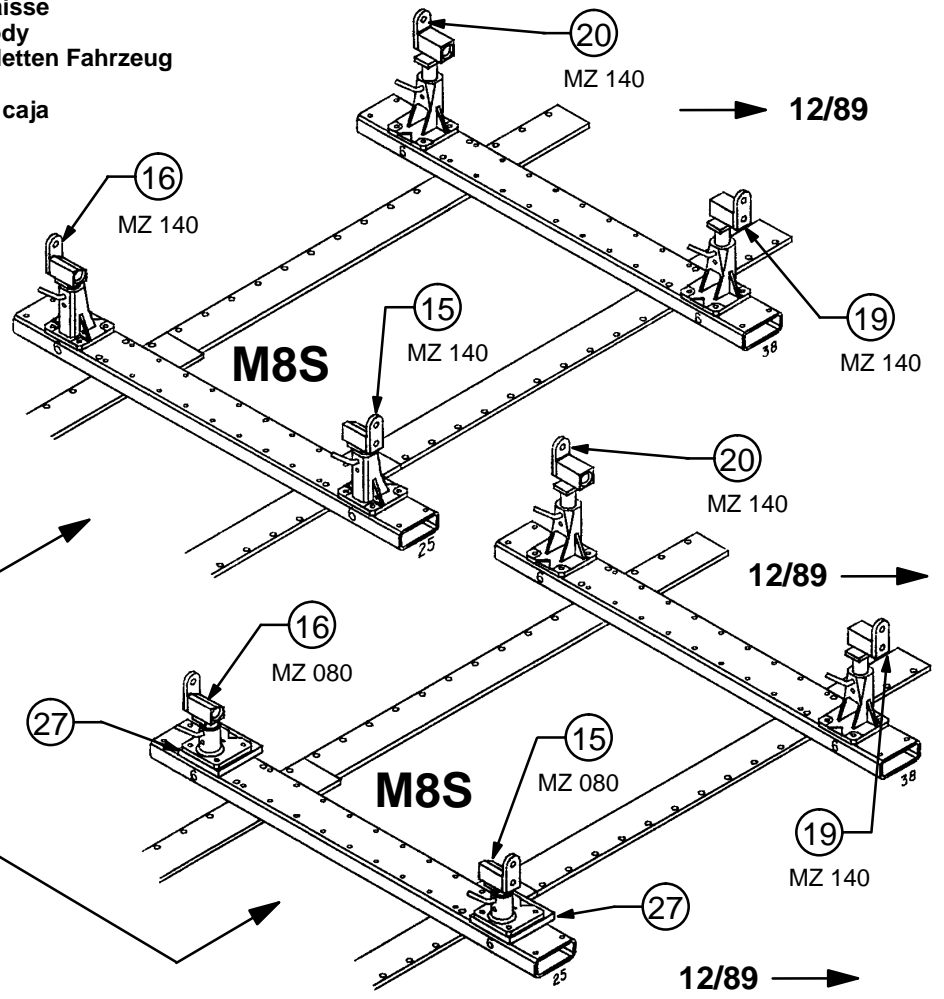
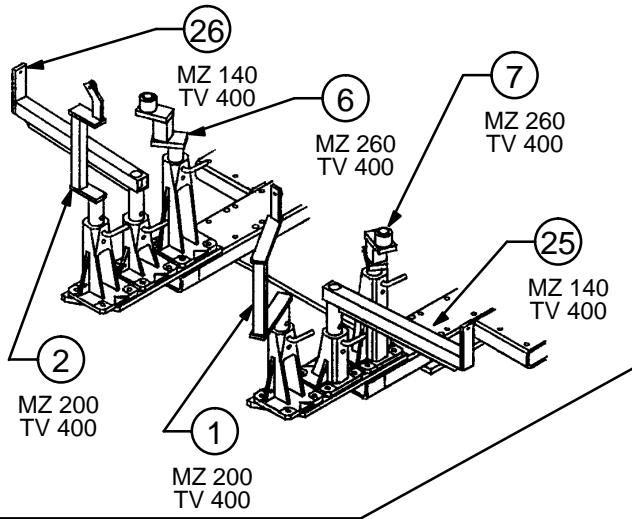
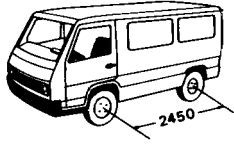
Voir feuille 420-D-11G1
See page (C 1-6)
Siehe Blatt 420-D-11H1
Vedere pagina (C 1-7)
Ver hoja



Choc avant sur chassis ou chassis plus caisse
Front crash on the frame or frame + car-body
Frontreparatur am Rahmen oder am kompletten Fahrzeug
Urto anteribre sul telaio + scocca
Choque delantero sobre chasis o chasis + caja

Voir feuille
See page
Siehe Blatt
Vedere pagina
Ver hoja

420-D-11G1
(A 1-9 oder D 1-7)



A partir du N° de chasis57303.
Ab chasis N°57303.

○ Avec ou sans mécanique
With or without mechanical elements
Con o senza parti meccaniche
Mit oder ohne Aggregate
Con ó sin mecanica desmontada

MERCEDES-BENZ

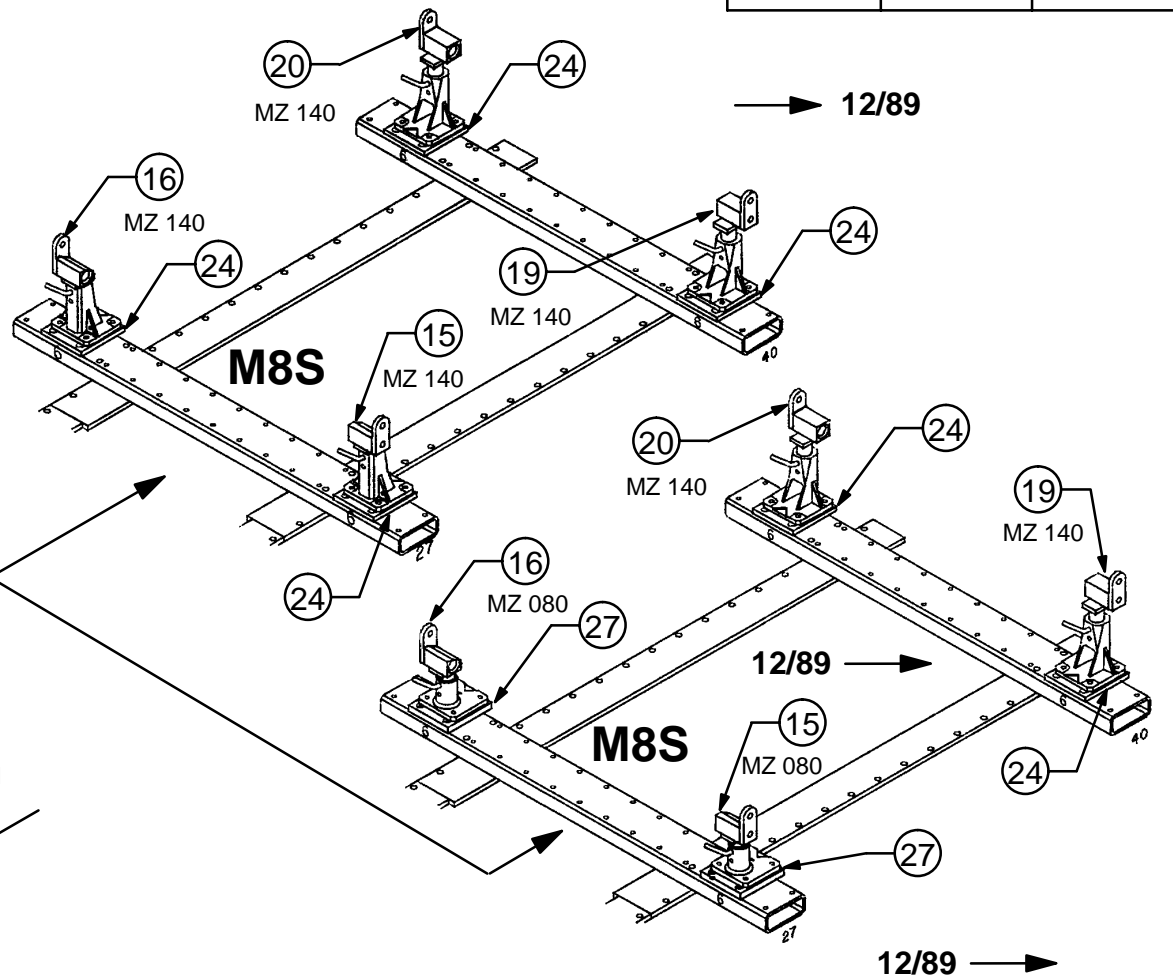
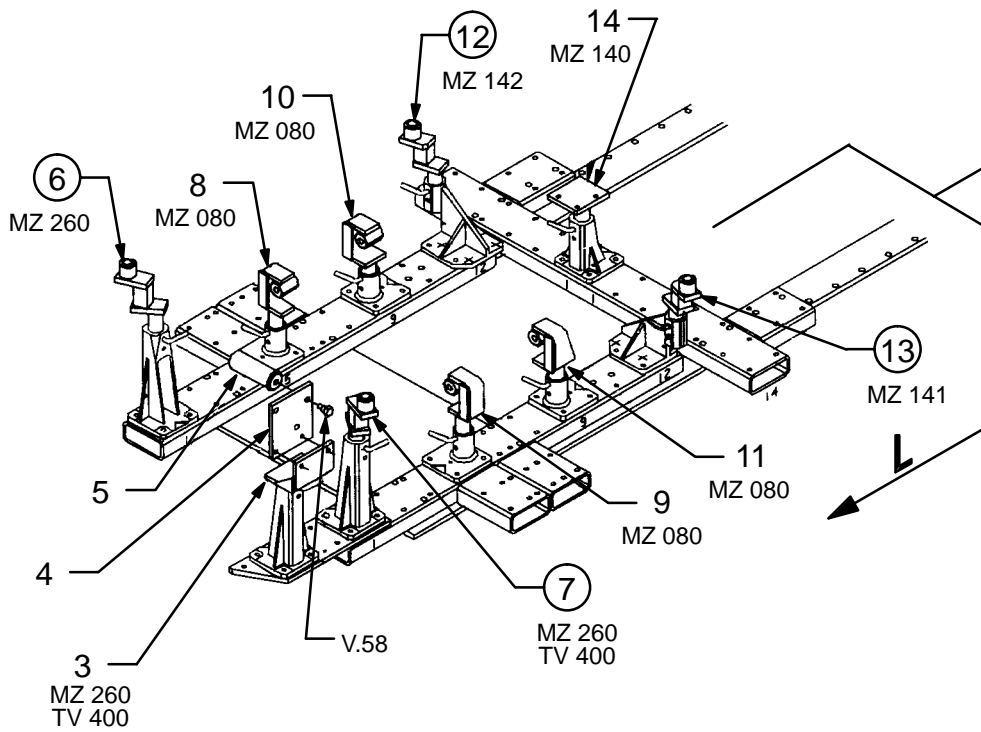
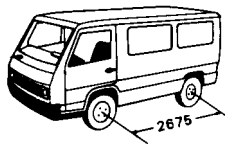
512.820

236 Kg 18.03.93 420-D-11 Q1

Choc avant sur chassis ou chassis plus caisse
Front crash on the frame or frame + car-body
Frontreparatur am Rahmen oder am kompletten Fahrzeug
Urto anteribre sul telaio + scocca
Choque delantero sobre chasis o chasis + caja

Voir feuille
See page
Siehe Blatt
Vedere pagina
Ver hoja

420-D-11H1
(A 1-8 oder D 1-6)

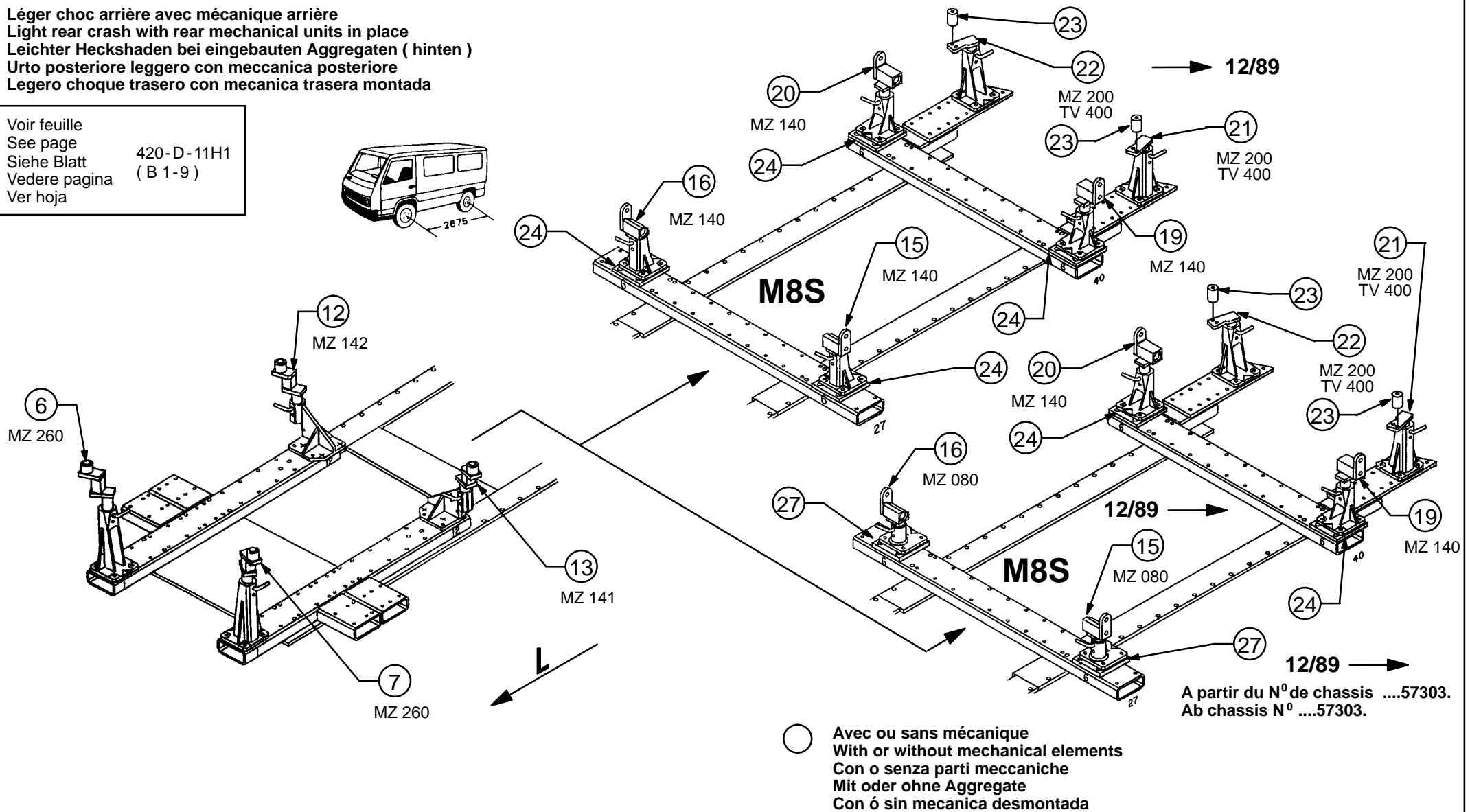


A partir du N° de chasis57303.
Ab chasis N°57303.

Léger choc arrière avec mécanique arrière
Light rear crash with rear mechanical units in place
Leichter Heckshaden bei eingebauten Aggregaten (hinten)
Urto posteriore leggero con meccanica posteriore
Legero choque trasero con mecanica trasera montada

Voir feuille
See page
Siehe Blatt
Vedere pagina
Ver hoja

420-D-11H1
(B 1-9)



A partir du N° de chassis57303.
Ab chassis N°57303.

MERCEDES-BENZ

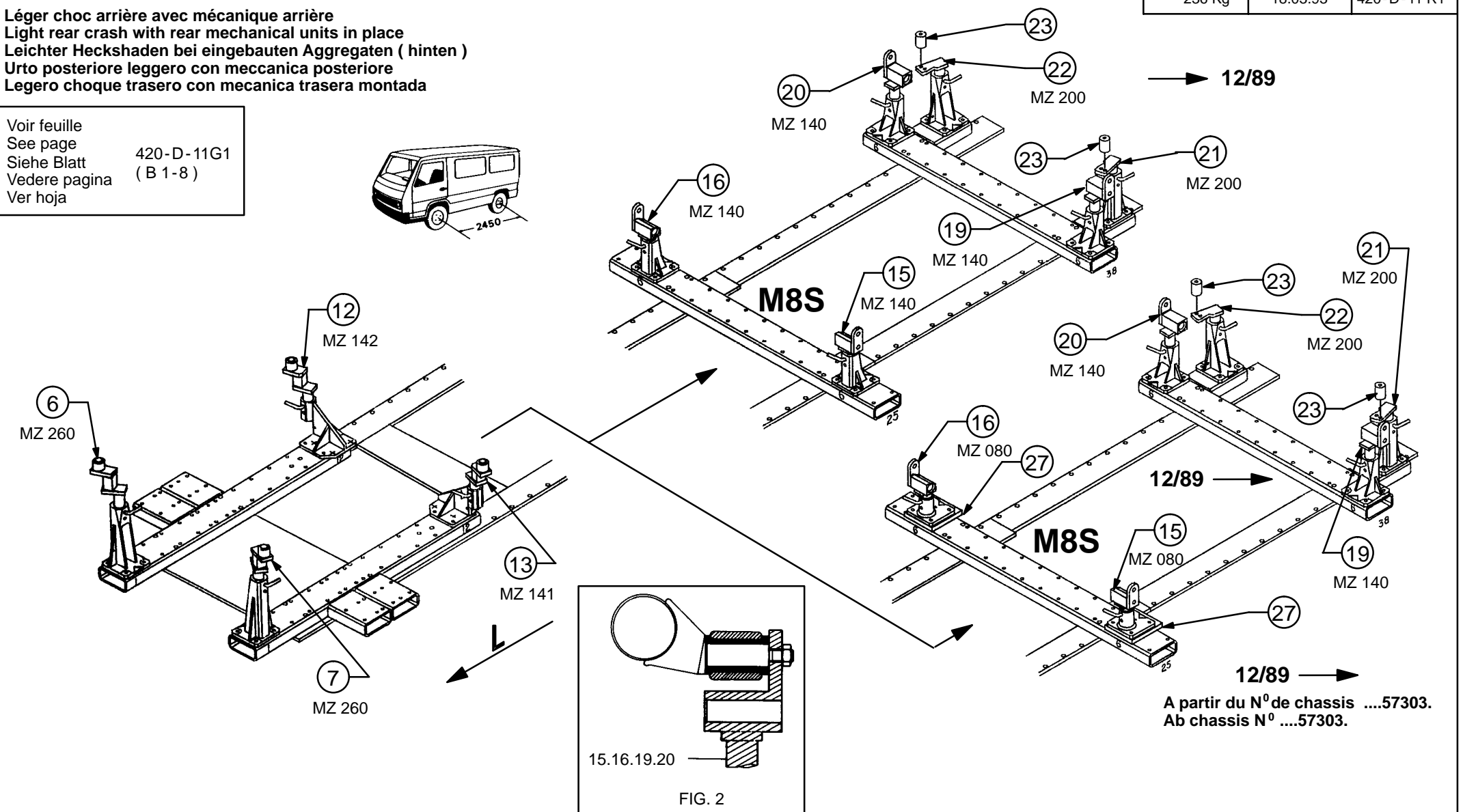
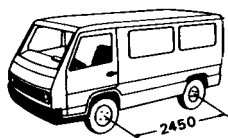
512.820

236 Kg 18.03.93 420-D-11 R1

Léger choc arrière avec mécanique arrière
Light rear crash with rear mechanical units in place
Leichter Heckshaden bei eingebauten Aggregaten (hinten)
Urto posteriore leggero con meccanica posteriore
Legero choque trasero con mecanica trasera montada

Voir feuille
See page
Siehe Blatt
Vedere pagina
Ver hoja

420-D-11G1
(B 1-8)

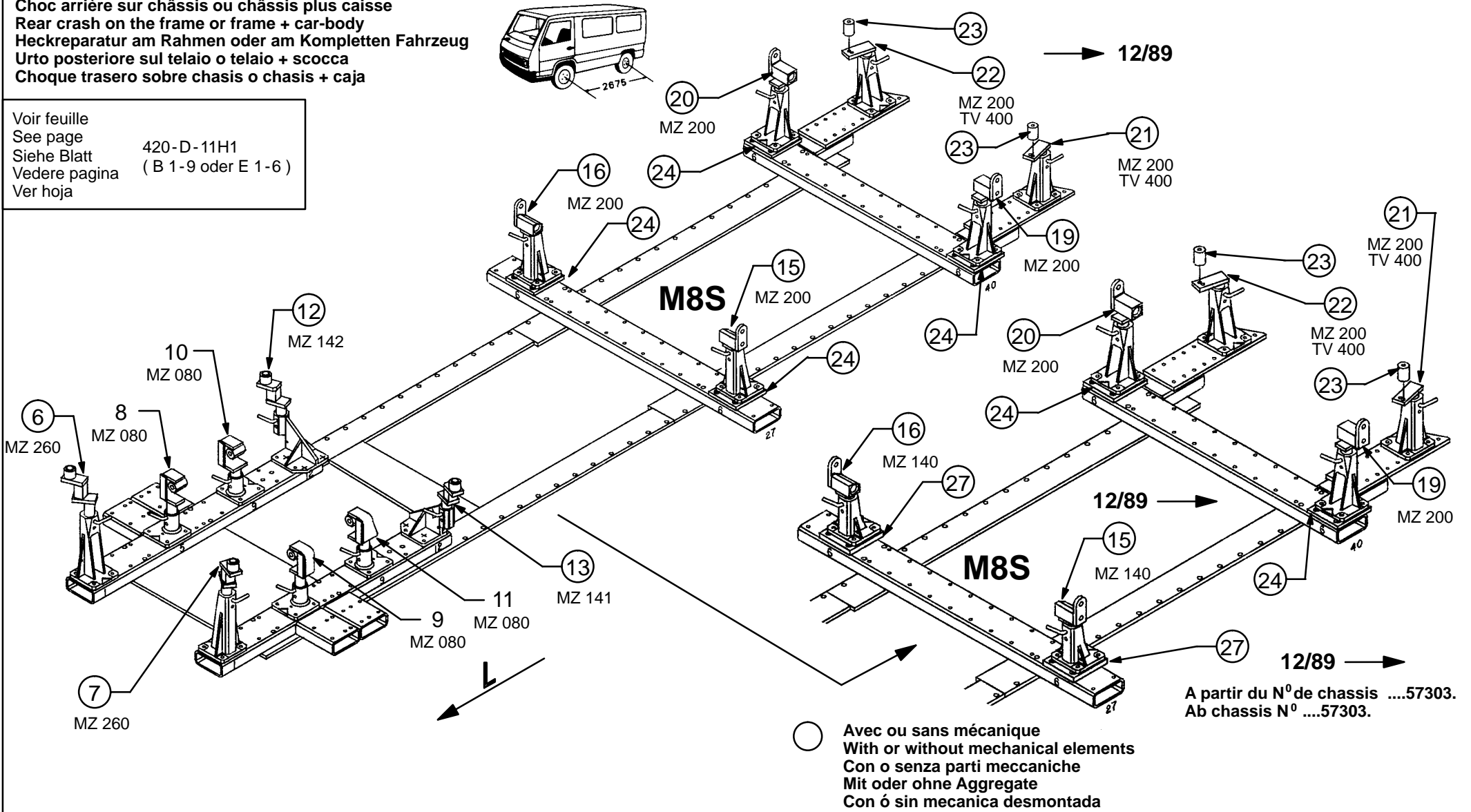


A partir du N° de chassis57303.
Ab chassis N°57303.

Choc arrière sur châssis ou châssis plus caisse
Rear crash on the frame or frame + car-body
Heckreparatur am Rahmen oder am Kompletten Fahrzeug
Urto posteriore sul telaio o telaio + scocca
Choque trasero sobre chasis o chasis + caja

Voir feuille
See page
Siehe Blatt
Vedere pagina
Ver hoja

420-D-11H1
(B 1-9 oder E 1-6)



MERCEDES-BENZ

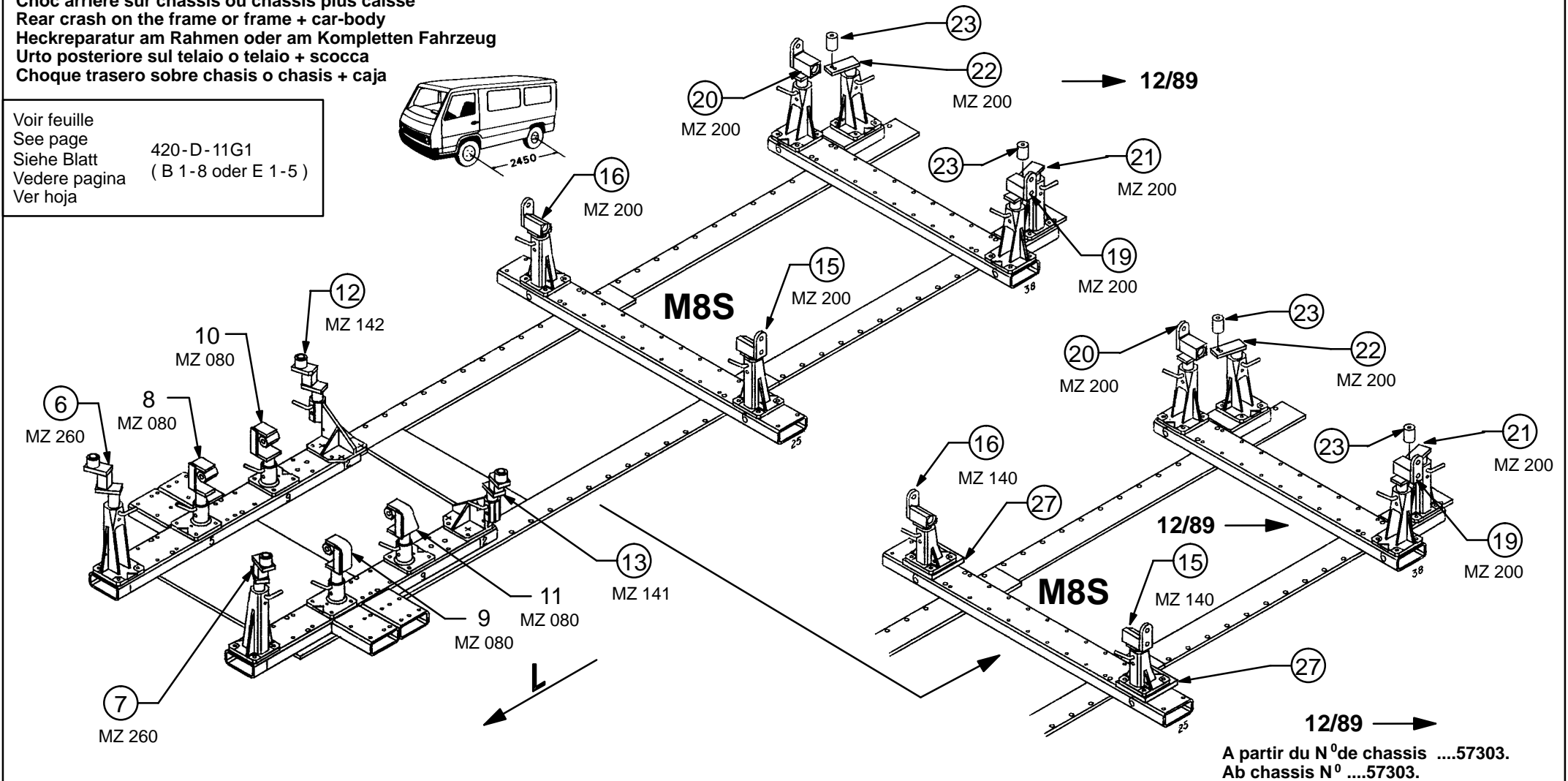
512.820

236 Kg 18.03.93 420-D-11 S1

Choc arrière sur châssis ou châssis plus caisse
Rear crash on the frame or frame + car-body
Heckreparatur am Rahmen oder am Kompletten Fahrzeug
Urto posteriore sul telaio o telaio + scocca
Choque trasero sobre chasis o chasis + caja

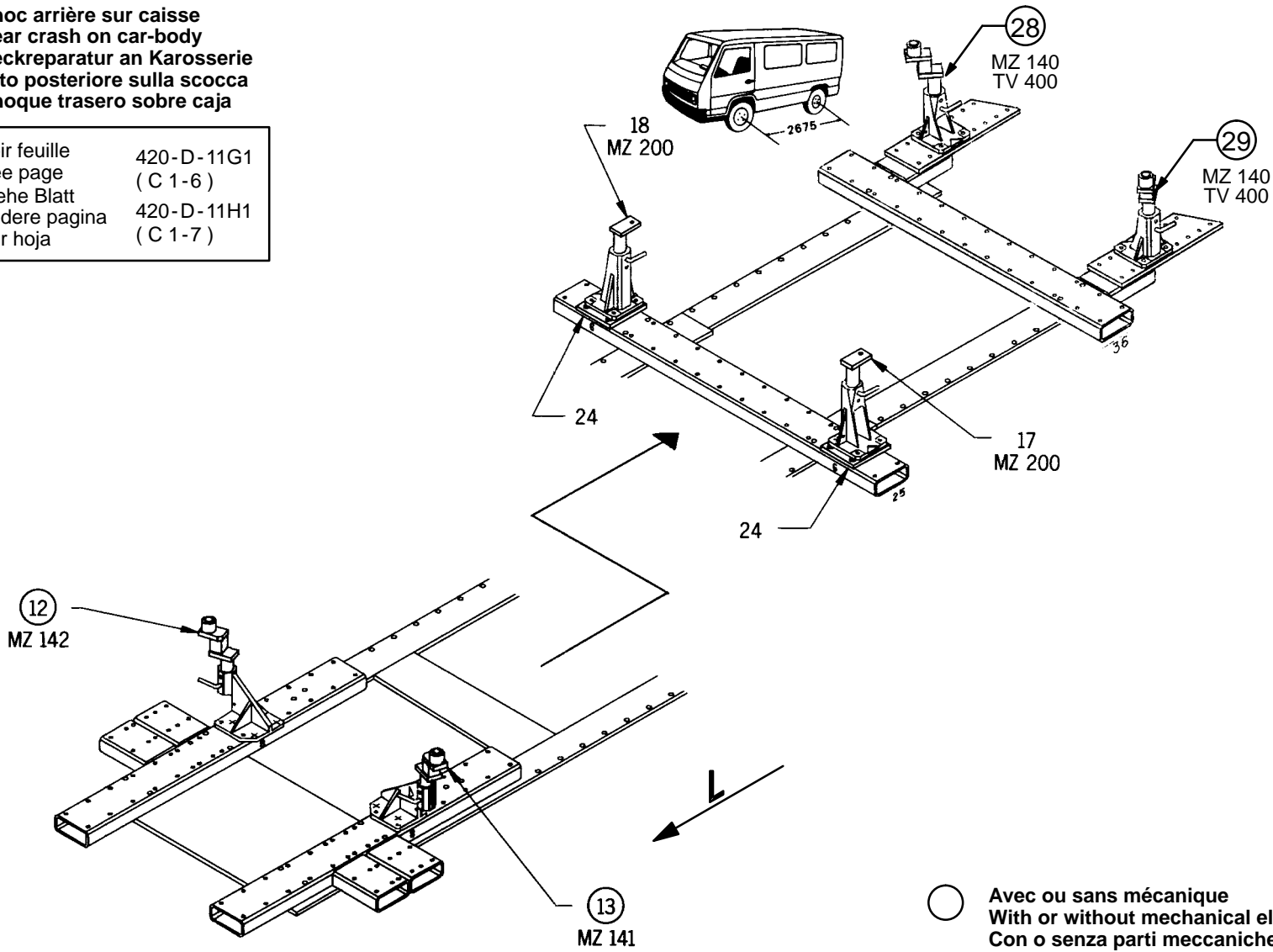
Voir feuille
See page
Siehe Blatt
Vedere pagina
Ver hoja

420-D-11G1
(B 1-8 oder E 1-5)



Choc arrière sur caisse
Rear crash on car-body
Heckreparatur an Karosserie
Urto posteriore sulla scocca
Choque trasero sobre caja

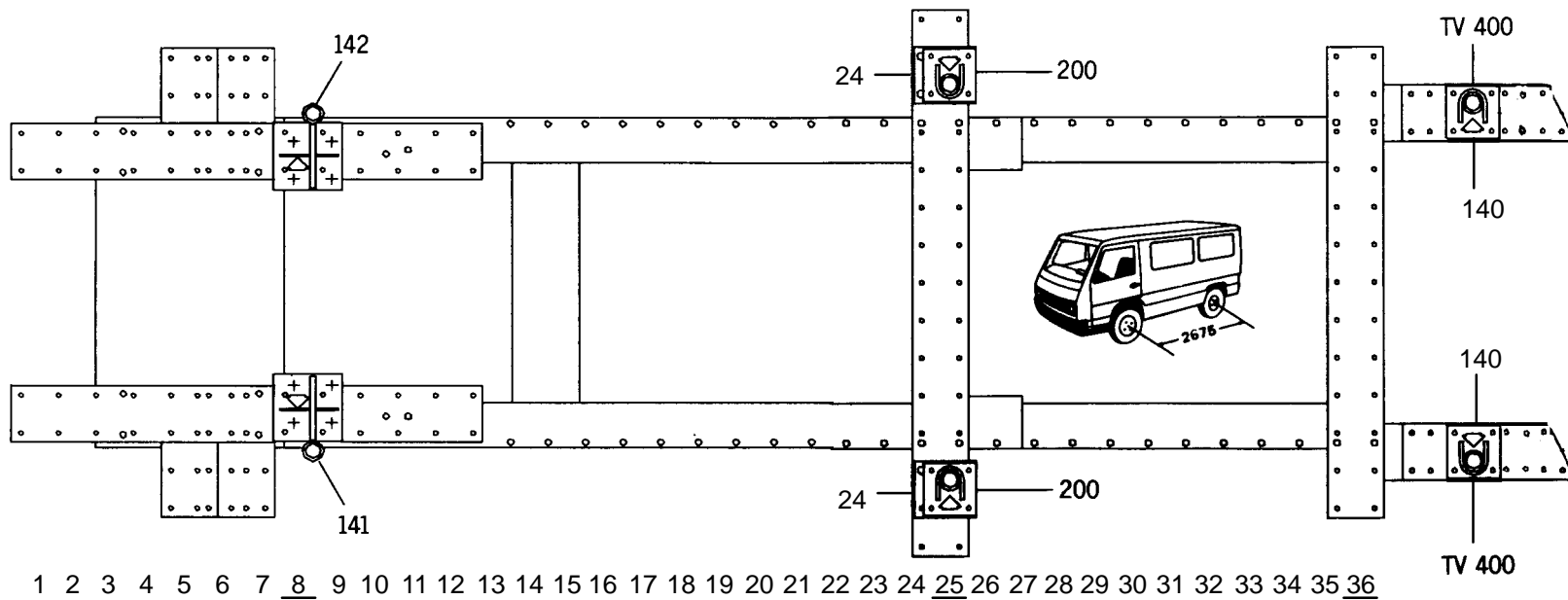
Voir feuille 420-D-11G1
See page (C 1-6)
Siehe Blatt 420-D-11H1
Vedere pagina (C 1-7)
Ver hoja (C 1-7)



MERCEDES-BENZ

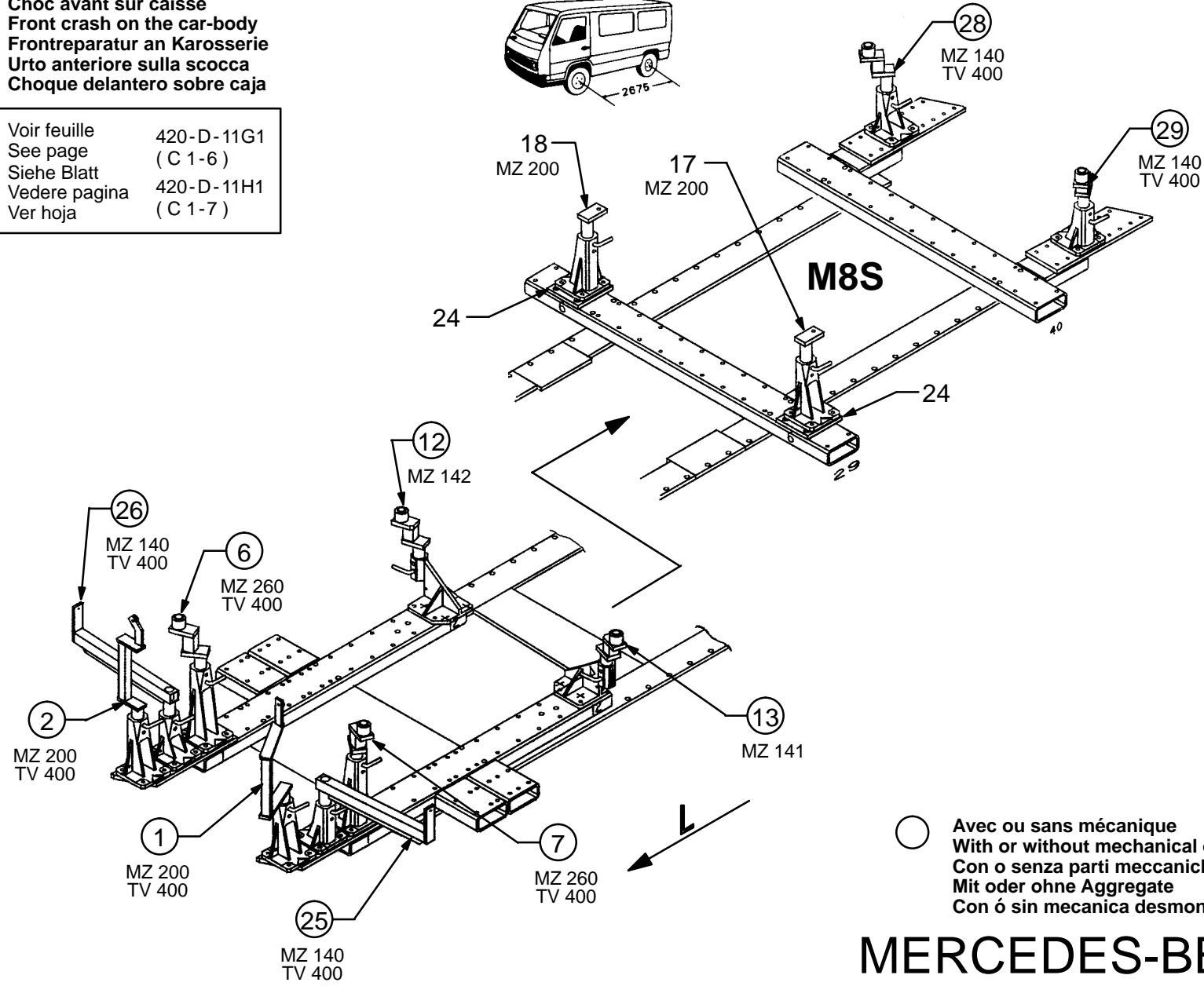
512.820

236 Kg 18.03.93 420-D-11 T1



Choc avant sur caisse
Front crash on the car-body
Frontreparatur an Karosserie
Urto anteriore sulla scocca
Choque delantero sobre caja

Voir feuille 420-D-11G1
See page (C 1-6)
Siehe Blatt 420-D-11H1
Vedere pagina (C 1-7)
Ver hoja (C 1-7)



○ Avec ou sans mécanique
With or without mechanical elements
Con o senza parti meccaniche
Mit oder ohne Aggregate
Con ó sin mecanica desmontada

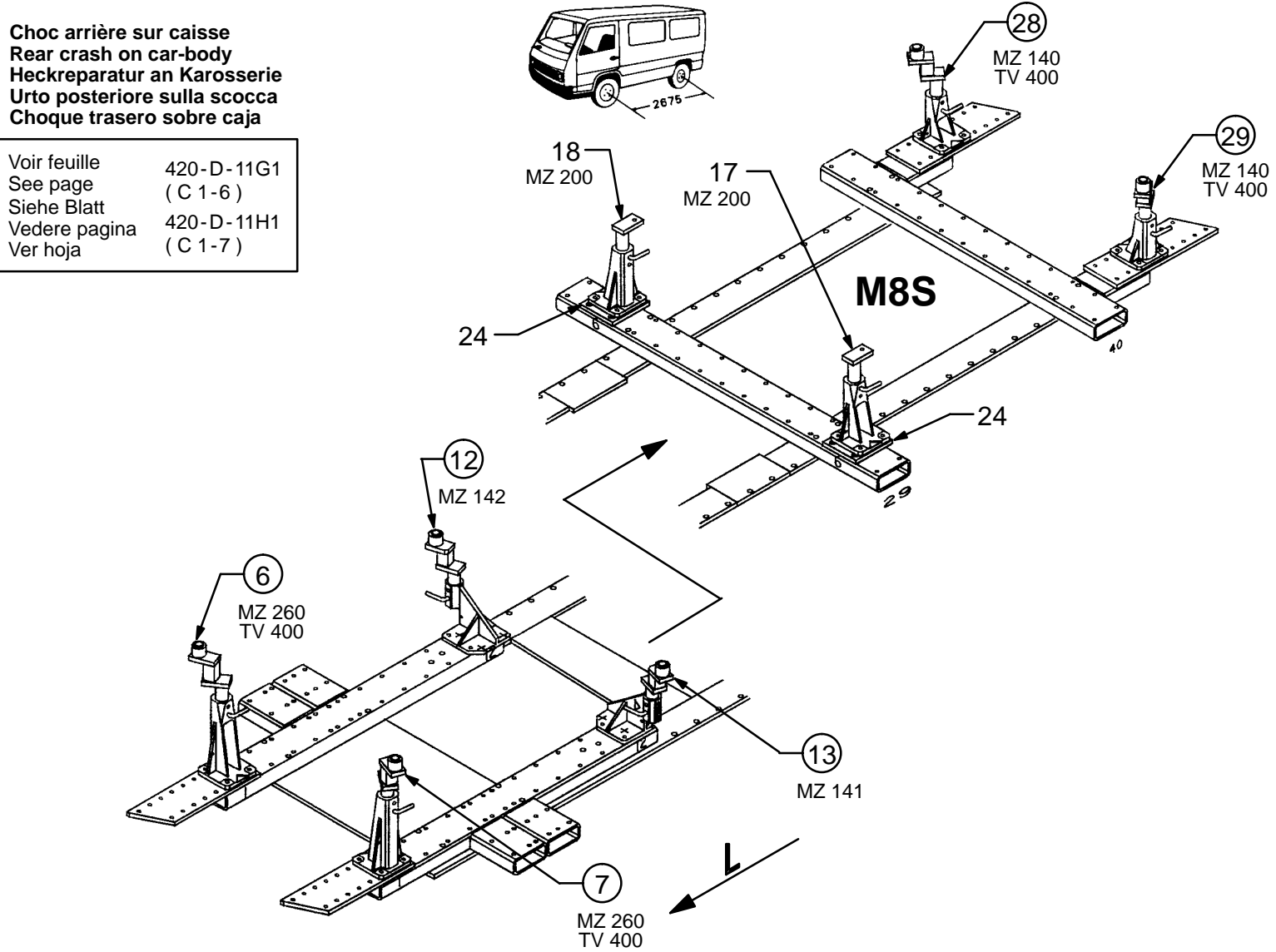
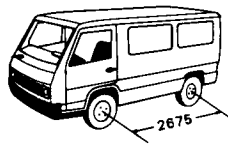
MERCEDES-BENZ

512.820

236 Kg 11.06.93 420-D-11 U1

Choc arrière sur caisse
Rear crash on car-body
Heckreparatur an Karosserie
Urto posteriore sulla scocca
Choque trasero sobre caja

Voir feuille 420-D-11G1
See page (C 1-6)
Siehe Blatt 420-D-11H1
Vedere pagina (C 1-7)
Ver hoja (C 1-7)

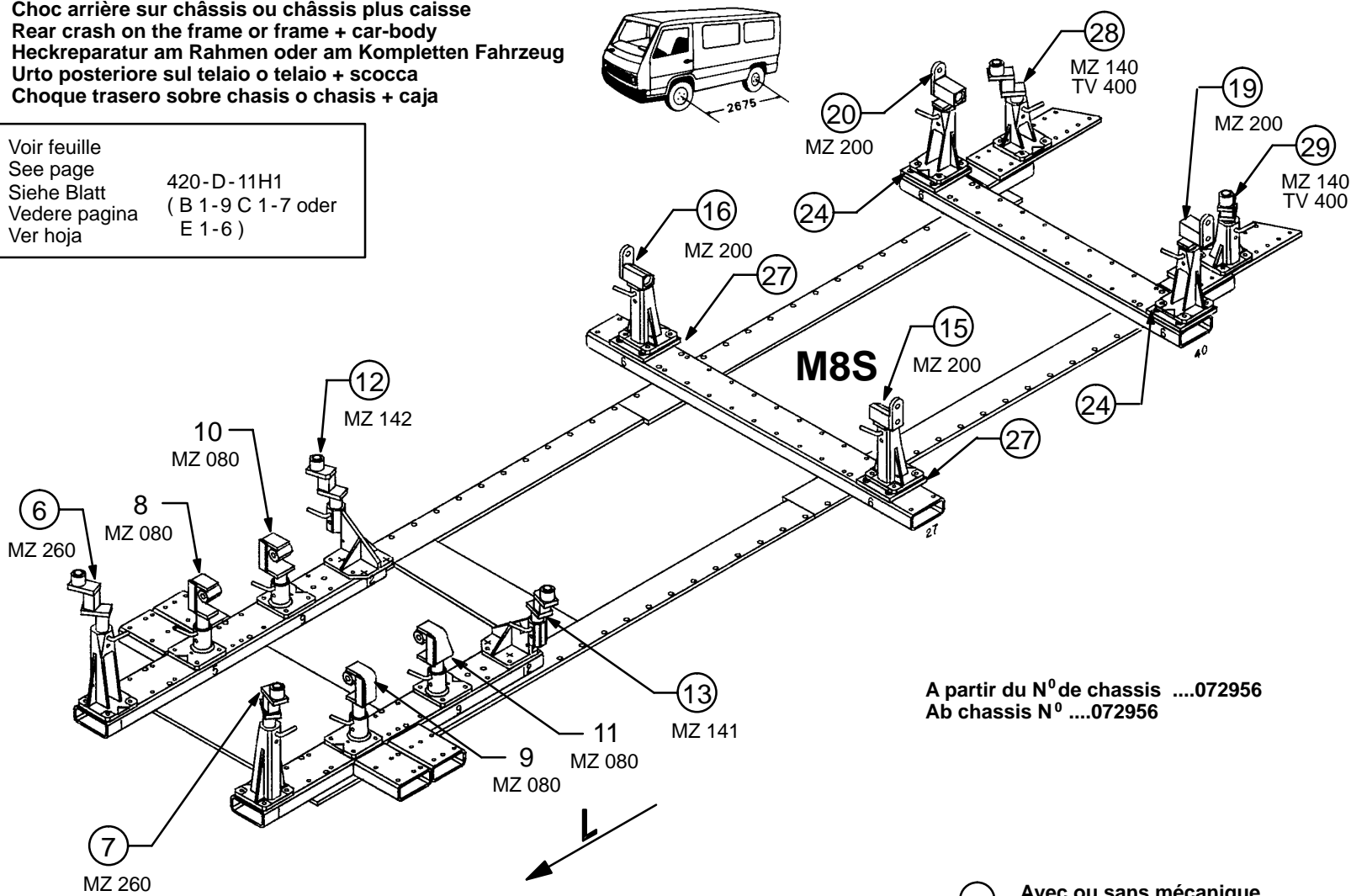


○ Avec ou sans mécanique
With or without mechanical elements
Con o senza parti meccaniche
Mit oder ohne Aggregate
Con ó sin mecanica desmontada

Choc arrière sur châssis ou châssis plus caisse
Rear crash on the frame or frame + car-body
Heckreparatur am Rahmen oder am Kompletten Fahrzeug
Urto posteriore sul telaio o telaio + scocca
Choque trasero sobre chasis o chasis + caja

Voir feuille
See page
Siehe Blatt
Vedere pagina
Ver hoja

420-D-11H1
(B 1-9 C 1-7 oder
E 1-6)



A partir du N° de chasis072956
Ab chasis N°072956

○ Avec ou sans mécanique
With or without mechanical elements
Con o senza parti meccaniche
Mit oder ohne Aggregate
Con ó sin mecanica desmontada

MERCEDES-BENZ

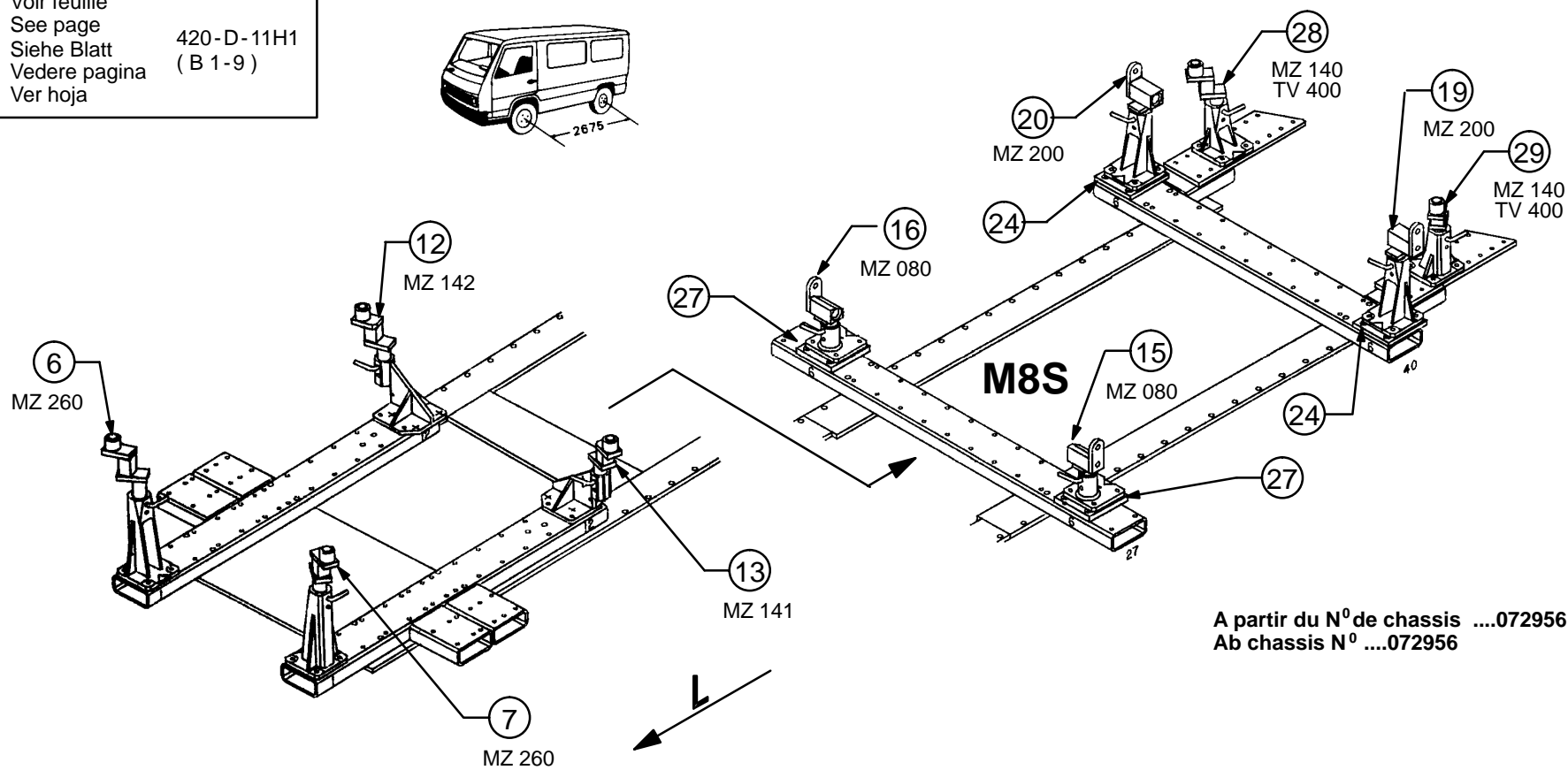
512.820

236 Kg 11.06.93 420-D-11 V1

Léger choc arrière avec mécanique arrière
Light rear crash with rear mechanical units in place
Leichter Heckshaden bei eingebauten Aggregaten (hinten)
Urto posteriore leggero con meccanica posteriore
Ligero choque trasero con mecanica trasera montada

Voir feuille
See page
Siehe Blatt
Vedere pagina
Ver hoja

420-D-11H1
(B 1-9)



A partir du N° de chasis072956
Ab chasis N°072956