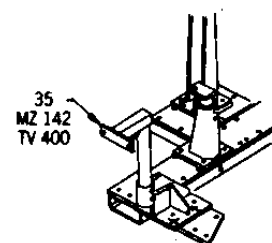
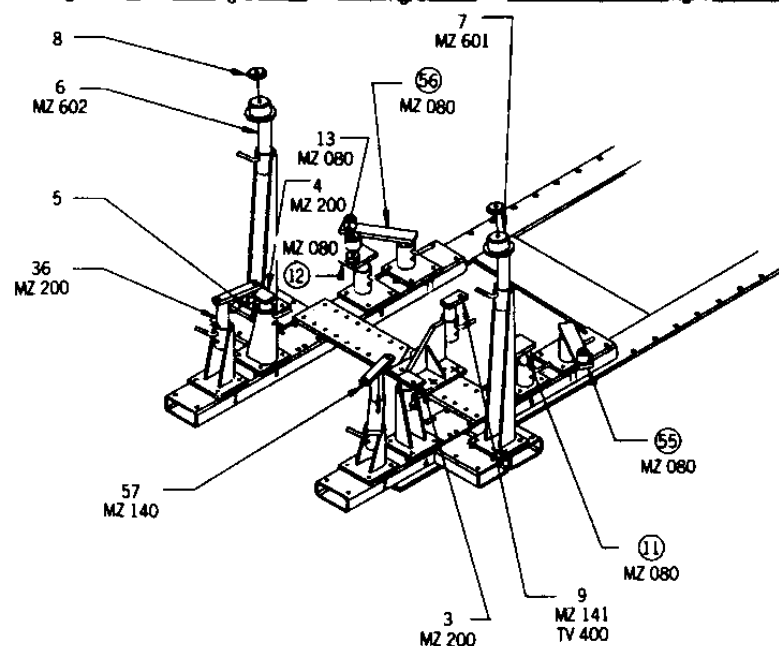
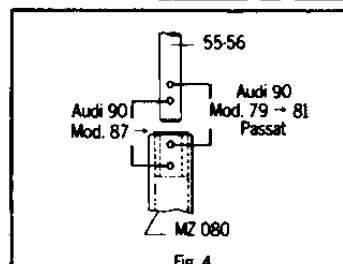
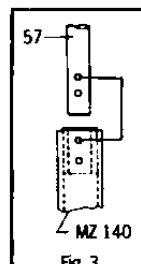
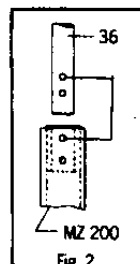
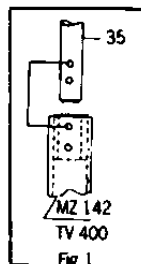




CELETTE.

VIENNE-FRANCE

VOLKSWAGEN AUDI 90 - PASSAT - COUPÉ - 5 CYL.



○ Avec ou sans mécanique
Con o senza parti meccaniche
Mit oder ohne Aggregate
With or without mechanical elements
Con o sin mecanica desmontada

VOLKSWAGEN

REP.	REFERENCE	PDS.	NB	MZ
35	452.735	5,0	1	142
36	452.736	2,0	1	200
57	452.757	3,0	1	140

Complément au
Complemento al
Zusatz zu
Complementary set to
Complemento al

452.310

452.308

10 kg 09.05.85 403 D-3 K



TV 400 - MZ 142 35 : Position de la traverse frontale.

MZ 140 57 : Fixation gauche du moteur.

MZ 200 36 : Fixation droite du moteur.

Note : Pour l'utilisation des pièces 35-36-57, voir Fig. 1-2-3.