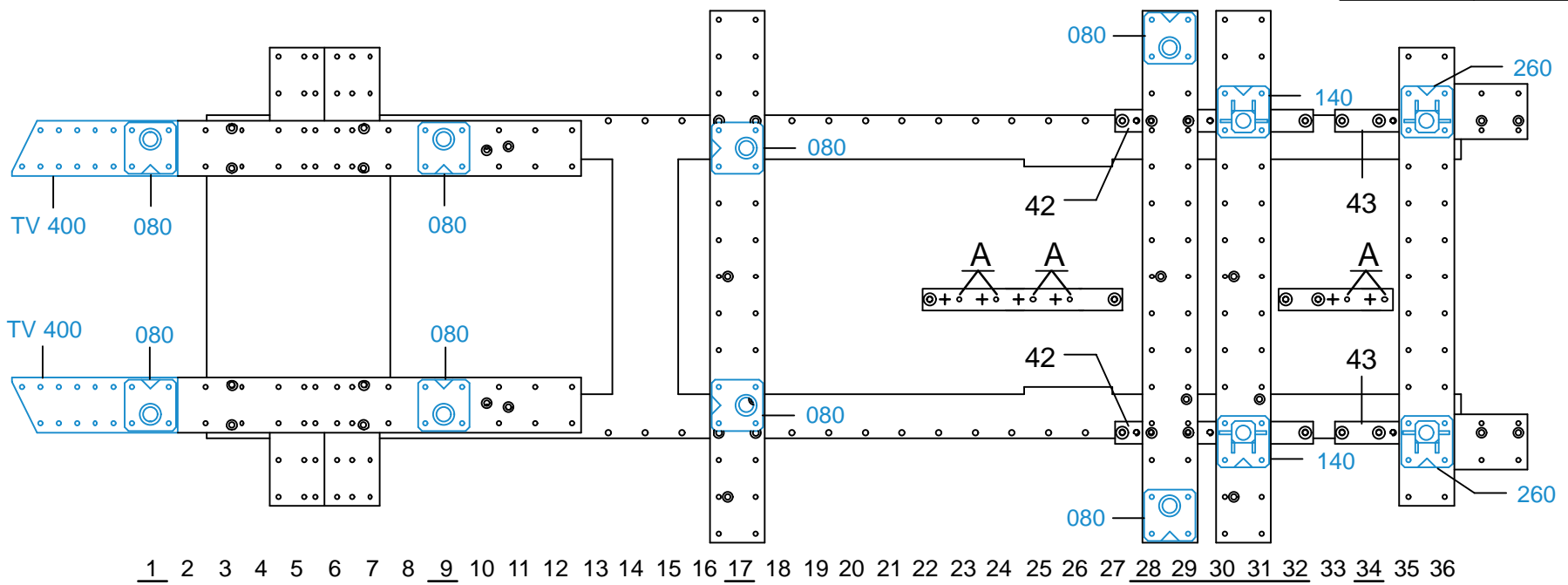
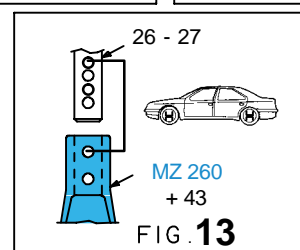
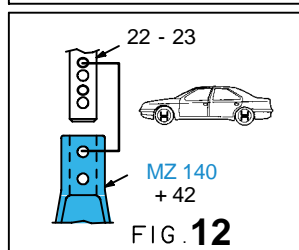
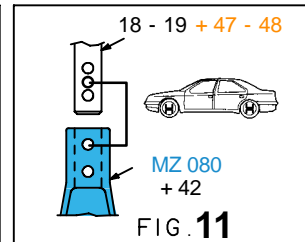
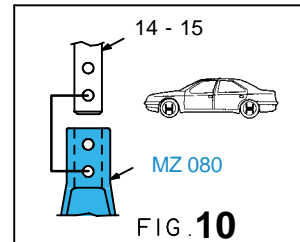
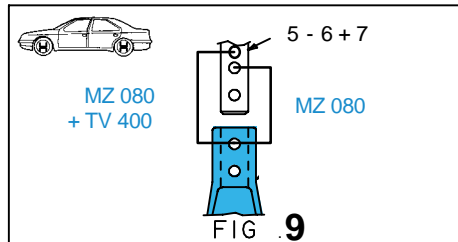
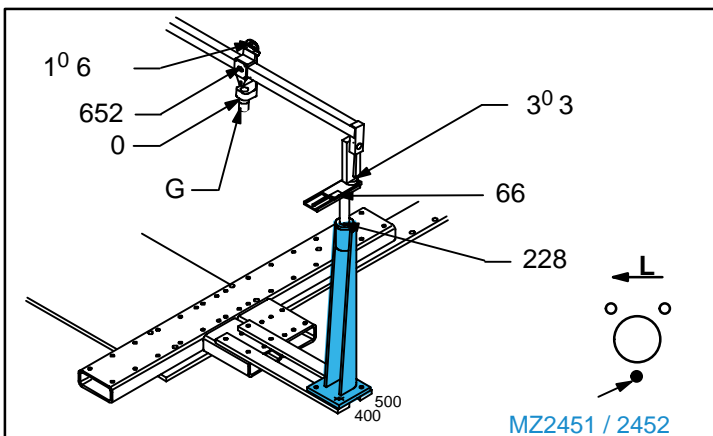


○ Avec ou sans mécanique  
 With or without mechanical elements  
 Con o senza parti meccaniche  
 Mit oder ohne Aggregate  
 Con ó sin mecanica desmontada

| REP.   | REFERENCE  | PDS       | NB | MZ                                      |
|--|------------|-----------|----|---|
| 47   | 2087.7047  | 1,2       | 2  |   |
| 48   | 2087.7048  | 0,8       | 2  |   |
| M 14-160   |            |           |    | 2                                       |
| complément au<br>complementary set to<br>complemento al<br>zusatz zu |            |           |    | <b>2087.300</b><br>+<br><b>2087.308</b> |
| 2087.307   |            |           |    |   |
| 4,5 Kg   | 13.01.2009 | 439-D-14G |    |   |



1 2 3 4 5 6 7 8 9 10 11 12 13 14 15 16 17 18 19 20 21 22 23 24 25 26 27 28 29 30 31 32 33 34 35 36



2087.307-RA3-1 01