

Multi-Diag

Trucks

ACTIA® 
Vehicle Electronics & Diagnostics





Multi-Diag

Trucks

Your core skills are our business



ACTIA channels all its expertise into a multimake diagnostics unit.



A 20-year partner to automotive manufacturers

Founded just over 20 years ago, ACTIA has since risen to international leader status in the automotive electronic diagnostics market. As a partner to major automotive manufacturers, ACTIA designs and produces electronic systems aimed at buses and coaches, trucks and special vehicles like construction and farming machinery. ACTIA's solutions involve every aspect of automotive electronic architecture from instrumentation, multiplexing, power management, fleet management systems, tachographs and remote processing to comfort and safety systems, multimedia and video surveillance. These solutions testify to ACTIA's know-how in these rugged, extremely demanding environments.

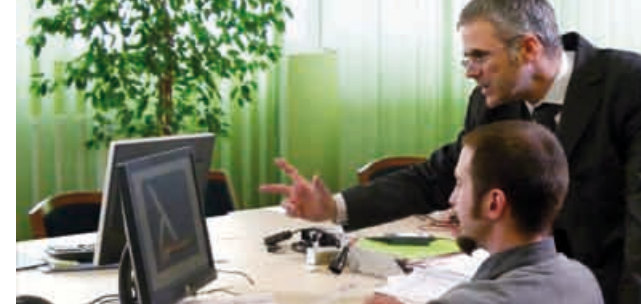
Inventing diagnostics

Harnessing its extensive expertise in electronic automotive architecture, ACTIA invented automotive diagnostics in 1985 and has been supporting the after-sales network and production factory equipment strategies of major manufacturers ever since. This leadership took on a whole new dimension with the 2003 launch of the Multi-Diag® range of multimake tools already adopted by many maintenance and repair professionals in Europe. The 2003 takeover of the brand MULLER BEM – a reference in garage and MOT equipment – has since enabled the ACTIA group to offer workshops a global garage equipment solution including wheel testing, antipollution, test bench, automotive lifts, electronic maintenance and diagnostics for both light and heavy vehicles. With Multi-Diag® Trucks, ACTIA continues to provide ongoing support to the repair industry.

A worldwide group in your neighbourhood

Because it is a concentrate of ACTIA's onboard systems, electronics diagnostics and garage equipment expertise, Multi-Diag® Trucks expresses all the power of an international group that has always maintained its pioneering spirit. Supported by an R&D investment of over 15% annual turnover, innovation is more than corporate culture, it is the daily driving force of every ACTIA group employee. Today, ACTIA is established on all five continents thanks to its subsidiaries and network of expert dealers. This worldwide deployment affords each of our customers a level of service quality to match the quality of our products, all manufactured in the group's industrial facilities. A certified quality environment, total control over the design and manufacturing process and state of the art production technology make our factories landmarks in the fields of PCB production and assembly of complex systems for the automotive, heavy vehicle and aeronautics sectors.

***Innovation, quality and service:
commitments that are delivered with every ACTIA product.***



Your core skills are our business.



ACTIA offers Multi-Diag® Trucks, a multimake diagnostics solution for Heavy Vehicles (tractors and trailers), Buses, Coaches and Utility Vehicles. Whether you are running a network or an independent garage, truck or bus fleet, Multi-Diag® Trucks meets the requirements of all maintenance and repair professionals.

For all brands and all systems

Multi-Diag® Trucks is a one-stop solution that empowers you to work on all major makes of heavy and utility vehicle, buses and coaches, as well as trailer electronics : Mercedes, Iveco, Renault Trucks, Scania, Volvo, Man, Nissan, DAF, Askam, Avia, BMC, Ford, Freightliner, International, Kenworth, Mack, Peterbilt, Bova VDL, Setra, Volkswagen, ERF, Knorr-Bremse, Wabco, Haldex, etc.*

It includes key electronic maintenance and repair functions – Fault code read/erase, actuators testing, parameters reading, ECU configuration, calibration, reset, etc. – for the main onboard systems: injection, ABS, EBS, EDC, suspension, retarder, gearbox, braking, main ECU, comfort systems, dashboard, airbag systems, tyre valves, tachographs, air conditioning, immobilizer, steering, etc...

Simple and practical

Easy to use, Multi-Diag® Trucks boosts your efficiency. Diagnostic plug location, adaptor cables and connection schematics are illustrated photographically, complex operations are guided by procedures, and technical documentation is built into the tool to instantly provide additional information including reference values, wiring diagrams, component location, maintenance plans, etc...

Robust and wireless

Multi-Diag® Trucks was specifically designed to enable you to run diagnostics in particularly demanding environments. Robust and designed to stand up to all the punishment workshop and roadside use, the tool features a Bluetooth wireless mode that lets you work on the vehicle from distances of over 50 metres from the vehicle.

Support on a daily basis

As an ACTIA tool, Multi-Diag® Trucks offers you the same quality of service we provide to automotive manufacturer dealer networks across the world. Equipment updates several times a year, hotline, after-sales service with standard replacements, and training are all advantages that will let you work confidently, efficiently and sustainably.

For professionals who need a true diagnostics partner: Multi-Diag Trucks grows with your business and is upgradeable to include all ACTIA's diagnostic innovations in the future.

* List may change according to software release



1. Select vehicle type.

Multi-Diag ACTIA

TRUCK

DAF IVECO MAN MERCEDES BENZ

RENAULT SCANIA VOLVO FORD

NISSAN AVIA ERF FREIGHTLINER

INTERNATIONAL KENWORTH MACK PETERBILT

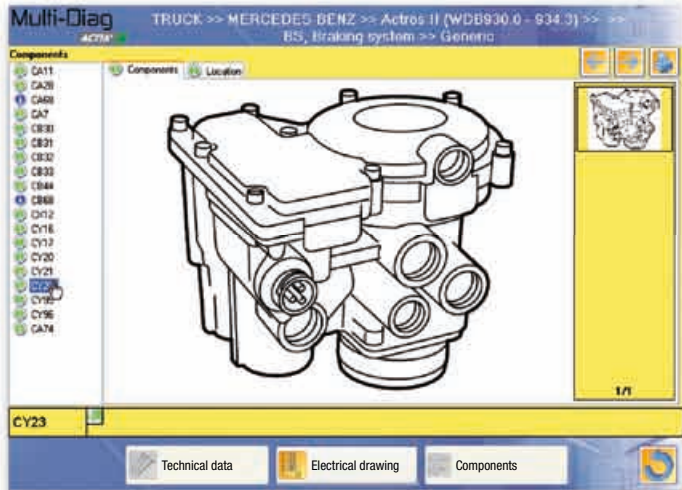
BMC ASKAM GENERIC

ACTIA

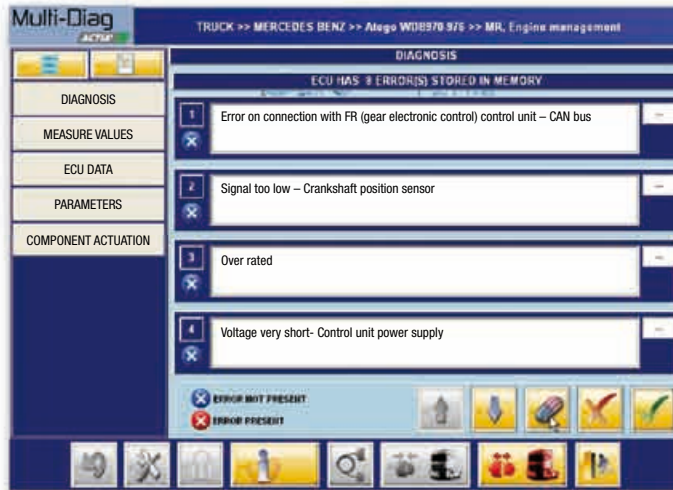
2. Select vehicle make.

[illegible]

3. Click on a model and a list of available systems pops up.



6. You can access the built-in technical documentation feature at any time to support your maintenance and repair operations.



5. Initialise communication with the vehicle. A series of menus and explanations walks you through the process.



4. Multi-Diag® Trucks shows you where the diagnostics plug is located and the right cable to connect to the vehicle.

Assisted access to maintenance and repair functions

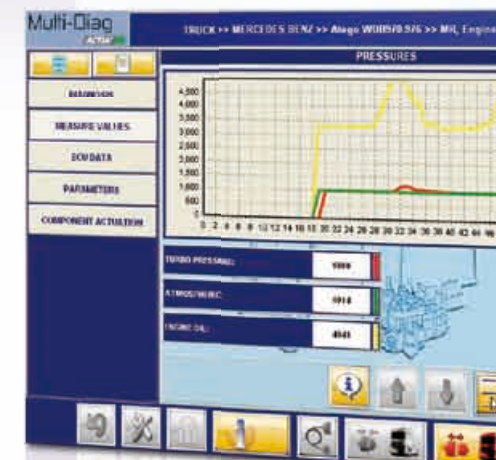
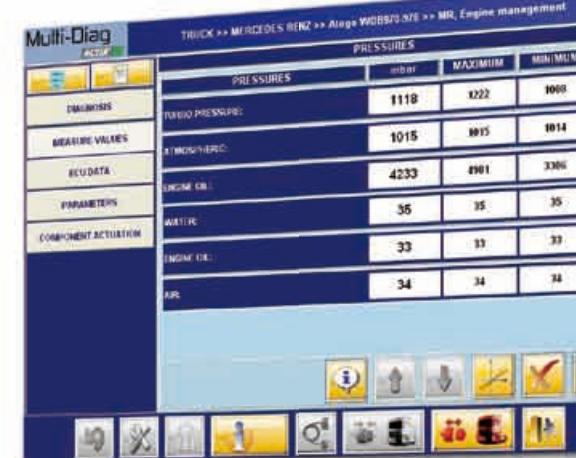
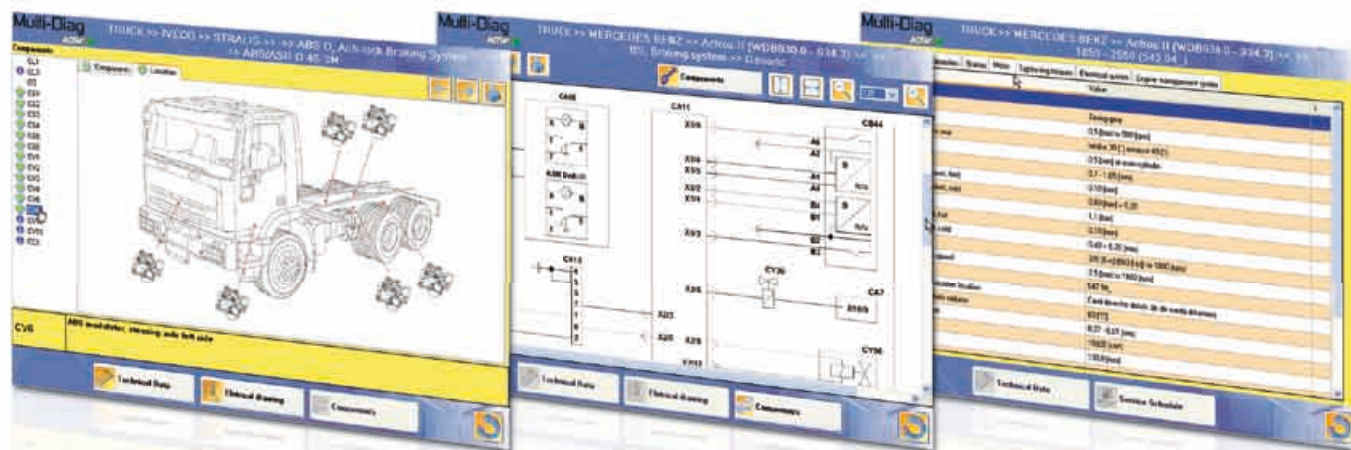
All your workshop equipment should help you to be more productive and boost profits while providing your customers with an excellent service level. With Multi-Diag® Trucks, ACTIA offers you an easy to use, fast diagnostic tool. A full diagnostic operation with step-by-step guidance only takes a few clicks.

Menu navigation is particularly intuitive and user friendly with easy to understand, detailed menus and properly identified functions to meet your workshop requirements.

Built-in technical documentation

Built-in technical documentation is yet another powerful feature brought to you by Multi-Diag® Trucks. The main menu lets you access a range of technical information including the location of diagnostic plugs, maintenance plans, technical data and reference values, diagrams, component locations, etc... If data like the location of the diagnostics plug or a maintenance plan is viewed before the diagnostic operation begins, other data such as reference values or wiring diagrams is often required to perform work. In these cases, you can easily and rapidly view the technical documentation interactively from the different diagnostic functions without having to return to the main menu.

In addition to diagnostics, Multi-Diag® Trucks provides true technical support.



Multi-Diag
Trucks

Mobility in your working
environment.



Designed for all your workshop and roadside jobs

To meet all the requirements of your working environment, Multi-Diag® Trucks provides mobility thanks to its Bluetooth wireless communications feature. Now you are free to move your diagnostics terminal where you need it while you run diagnostics in your workshop or on the roadside. This freedom of movement also helps you to work quicker.

Multi-Diag® Trucks is delivered standard with a full set of vehicle adaptor cables.*

The truck manufacturers' choice

A heavy vehicle diagnostics solution has to come with maximum performance, mobility and robustness guarantees. ACTIA's diagnostics station was designed to meet all the requirements of workshop use:

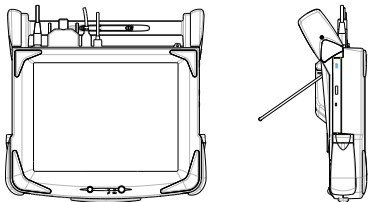
- Aluminium frame
- Elastomer protection
- Hard drive mounted on shock absorbers
- Hydrocarbon-resistant
- Protected connectors
- Impact-resistant touch screen technology
- etc...



This diagnostics station has already proven itself in the field since it has been adopted by many manufacturers such as Renault trucks, Mercedes, Mitsubishi, Manitou, Fiat, etc... and by more than 25,000 workshops around the globe: independent repair workshops and big name heavy, industrial and special automotive manufacturer networks.

This equipment bears the ACTIA label and is manufactured in the group's factories, a guarantee of reliability and quality because our production processes meet automotive and aeronautical manufacturing standards. ACTIA group facilities are certified ISO 9000, ISO14001, TS 1694, EN 9100 and NADCAP.

** The type and number of cables can vary depending on the country and options selected*



Bluetooth technology



The ACTIA service guarantee.



ACTIA provides day to day support with a quality of service that has proven itself around the world both in manufacturer after-sales networks and independent repair workshops. Reliability, proximity, quality and speed are the core concerns of the services that come with our Multi-Diag® Trucks.

Targeted training courses

ACTIA and its partners offer various training modules to enable you to use your diagnostics equipment better and more profitably. Given by diagnostics and maintenance/repair specialists, these courses will make you fully proficient with your Multi-Diag® Trucks and get the most from the advantages it provides.

Customized commissioning service

The delivery of your Multi-Diag® Trucks unit can include customized installation and commissioning by a technician from our support service network.

Unlimited access to our technical hotline*

Your annual subscription gives you access to the Multi-Diag® technical hotline to help get you up and running and to provide day-to-day support for making the most of your diagnostic tool.

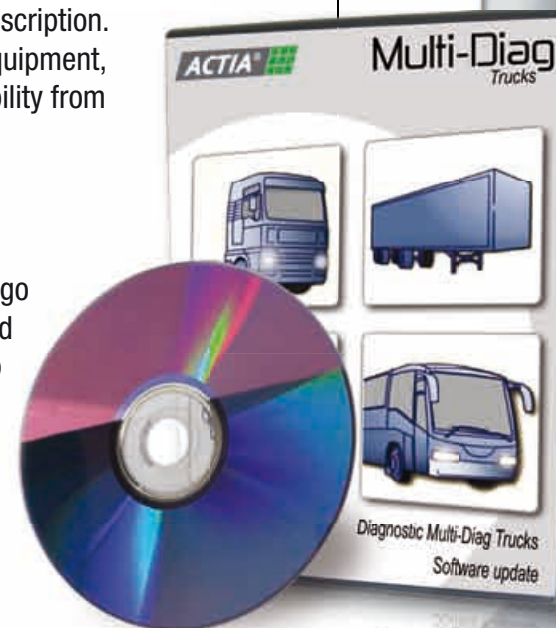
Updates throughout the year*

Your Multi-Diag® Trucks gets better and better with each successive update included in your subscription. You will be receiving update CD-ROMS several times a year to enhance the performance of your equipment, extend vehicle coverage, increase the number of functions available and new tools to boost profitability from your diagnostics station.

Warranty and standard replacement within 48h*

We have designed Multi-Diag® trucks to support you on a daily basis, so we are prepared to go the whole way by including a warranty with your yearly subscription and, if necessary, a standard replacement within 48h. So, if you have a problem, another unit will be made available to you to keep you operating in optimum conditions.

* Subject to subscription renewal. May vary depending on the equipment pack and country



Maximum performance today and tomorrow.

Multi-Diag® Trucks is totally future-proof. Based on PC technology, it can interface with other tools and software. For instance, you can equip your Multi-Diag® Trucks diagnostics station with a Multi-Diag® for light vehicles module, oscilloscope, parts catalogue and, of course, connect it to a printer or surf on the Internet.

As proof of its commitment to maintenance and repair professionals, ACTIA guarantees a sustainable diagnostics solution. More than 20,000 Multi-Diag® users can testify to this commitment. With each new update, their diagnostics tool gets more and more powerful and ACTIA keeps the innovations coming their way.

As a long-standing diagnostics partner to major automotive manufacturers, ACTIA is at the very centre of the diagnostics technology and regulations scene and is therefore able to anticipate future developments.



Sharing our values

By choosing Multi-Diag® Trucks, you share our values. Quality and innovation are the core values of all our equipment and service solutions from the design phase all the way to production and use.

We expect the same from our partners, especially our suppliers. This rigour is undoubtedly the secret of ACTIA's success since it was founded.

Other values also energize our group: our profession – electronic automotive diagnostics - places us at the very centre of society's major concerns like safety and environment. Digital tachographs, anti-pollution equipment, electronic diagnostics, test benches and MOT, ACTIA solutions help to improve safety on the road and environmentally friendliness.

Designing and manufacturing products that are true to our values is considered a privilege by all group employees and a source of positive energy that drives the dynamics of the entire ACTIA group.

By choosing ACTIA, you choose to be part of the dynamics.





www.actia.com

www.actiamuller.com



Credits photos : Aktis & Hervé Piraud

Ref : P410090A 08/2008



Due to advances in technology, ACTIA® reserves the right to change the features of this product at any time without notice.

This document is not, therefore, contractually binding.